

**Envisioning a Better Future:
SCENARIO PLANNING FOR LIVABILITY**



Presented to:
Washington APA Conference
October 19, 2014

By:
Lisa Key, David Evans and Associates
Carole Richardson, PE, Plangineering LLC


Outline

- What is Scenario Planning
- Our Process for the Bannock Transportation Planning Organization (MPO in Southeastern Idaho)
- Scenario Development and Analysis
- Preferred Scenario
- Transportation Performance Findings

2

What is Scenario Planning?


- Scenario planning helps transportation professionals prepare for what lies ahead.
- We examine different ways a community could choose to grow, and test how alternatives could affect life quality.



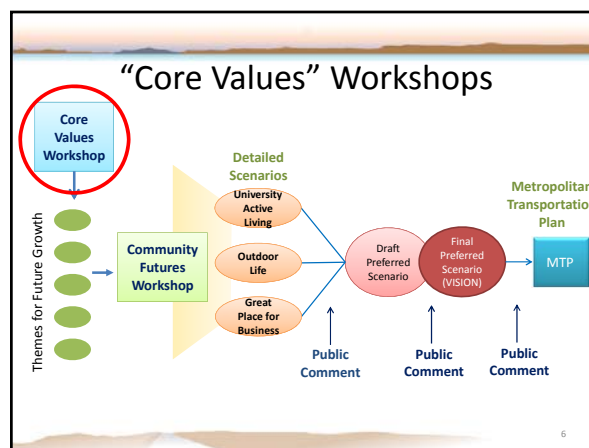
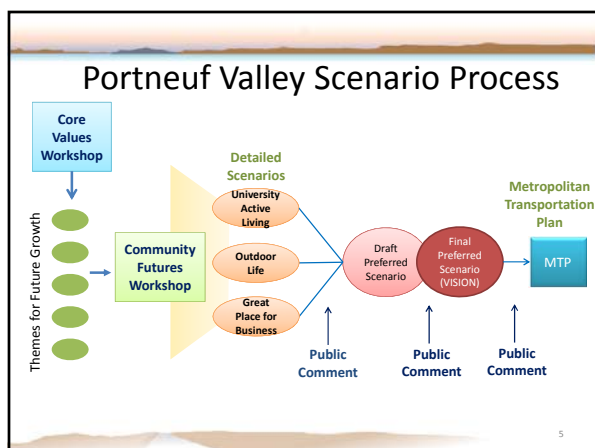
3

What is Scenario Planning?

- A “preferred” scenario, or vision is adopted, to guide growth in the preferred direction.



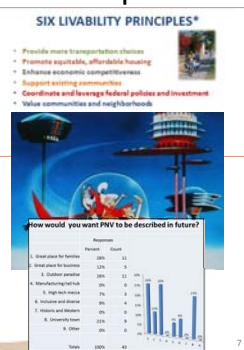
4



Core Values Workshops

Three-fold purpose:

- Educate and discuss livability principles
- Put the planning horizon into context
- Understand community identity and future development desires



7

Core Values Feedback: Transportation

Important Topics:

- Congested Arterials
- Complete Streets

Preliminary Investment Priorities Supported by Participants

- Complete Streets
- Congestion Management
- Walking and Biking



8

Core Values Feedback: Housing

Important Topics:

- Neighborhood Character
- Range of Prices



Potential Strategies Supported by Participants:

- Infill Development
- Compact Growth



9

Core Values Feedback: Economy

Top Topic for Participants:

- Number of Jobs

Priorities Supported by Participants:

- Attracting Employers
- Education
- Retaining Talented Residents



10

Core Values Feedback: Future Character

Q: "How would you want Portneuf Valley to be described in future?"

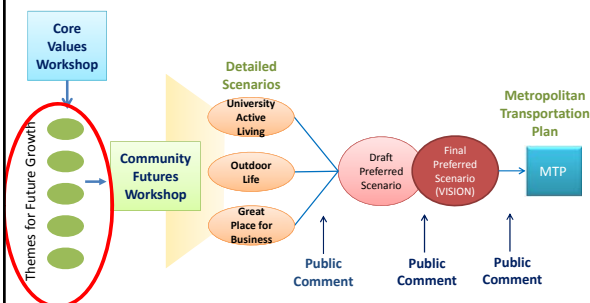
A:

- Great Place for Families
- Outdoor Paradise
- University Town



11

Themes for Future Growth



12

Strong Visions for the Future



University
Town

Active Living

Outdoor Life

Great Place
for Business

Strong Visions for the Future



University Town

A community centered around a thriving academic hub tied to the people who live and work here

- Campus is easy to get to by car, bus, bike, or foot
- Plenty of retail and hospitality near campus
- Economic development emphasizes R&D, high tech, start-ups, etc.
- Graduate-friendly housing keeps graduates in town and attracts new ones

Strong Visions for the Future



Active Living

Cities and neighborhoods that are full of healthy activity and life

- "Complete streets" support cars, buses, bikes, and walking
- Compact development increases density in existing cities and neighborhoods
- Mixed use development keeps daily activities close together
- Economic development encourages small businesses and offices downtown

Strong Visions for the Future



Outdoor Life

Embracing our natural setting with ready access to recreation and the outdoors anywhere you go

- Abundant trails, parks, and outdoor recreation
- "Conservation development" puts clusters of new homes and jobs out near nature without using too much land
- Economic development emphasizes tourism, sports, and recreation
- Air and water quality are a focus

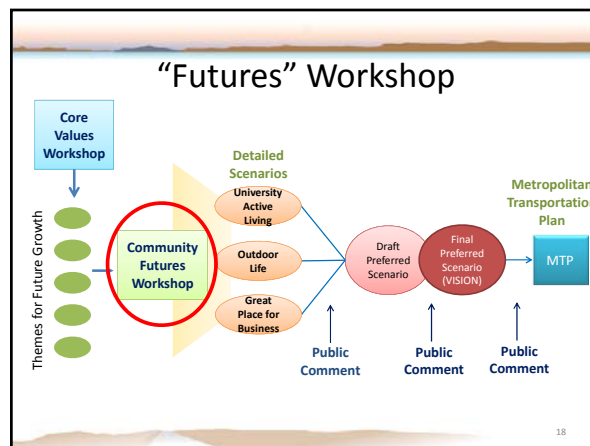
Strong Visions for the Future

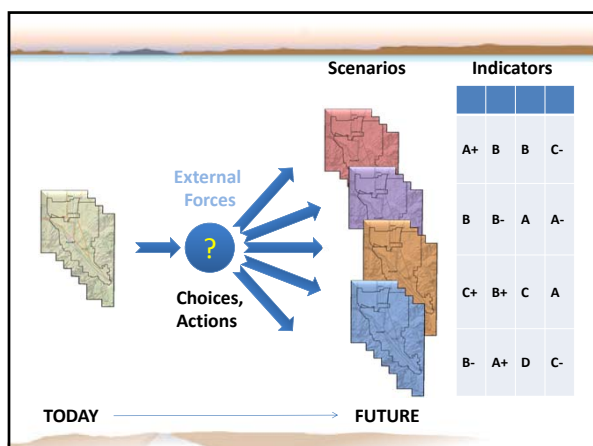


Great Place for Business

Welcoming and supporting new employers and a robust, well balanced economy.

- Strong infrastructure and prime locations for businesses of all kinds
- Attention to needs of many industry sectors and business types and sizes
- Short commutes
- Air and freight transportation well supported





Assumptions

One fixed set of future assumptions for population and employment growth was used.

Participants worked within these control totals to spatially assign the densities and character of growth they envisioned under each scenario.

20

Interactive Table Top Mapping

Scenario Planning Workshop, August 14, 2013

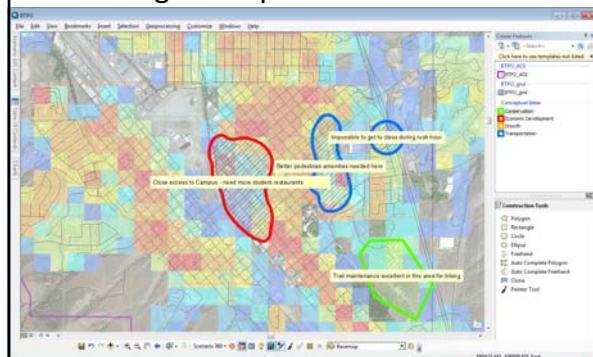


21

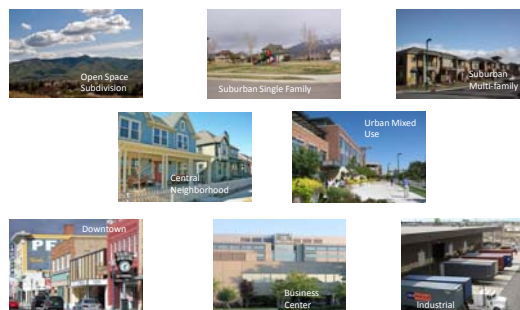
Scenario Planning Exercises

- 1. Planning Concepts** – flip chart idea session on theme-supporting planning ideas, and freehand sketching on map to illustrate needs, opportunities, etc.
- 2. District Character** – assign character or transect to each district
- 3. Growth within Districts** – chip exercise for growth allocation within districts
- 4. Nodes and Connectors** – identify links and modes between activity centers, then prioritize

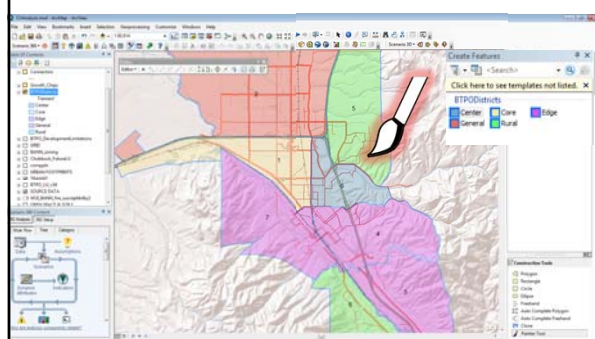
Planning Concepts – Freehand Sketch



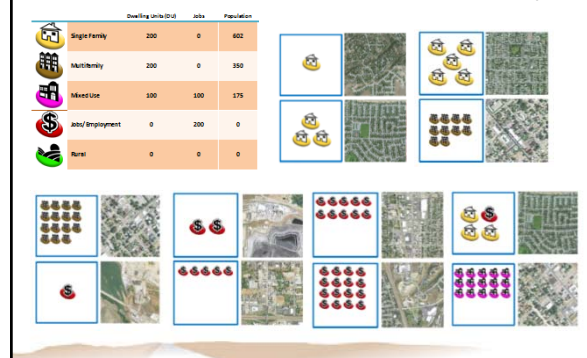
District Character



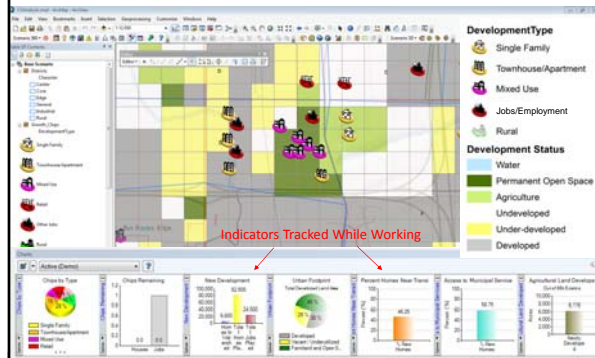
District Character – Painting (Transects)



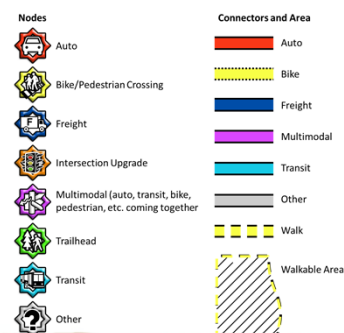
Growth Within Districts – Virtual Chips



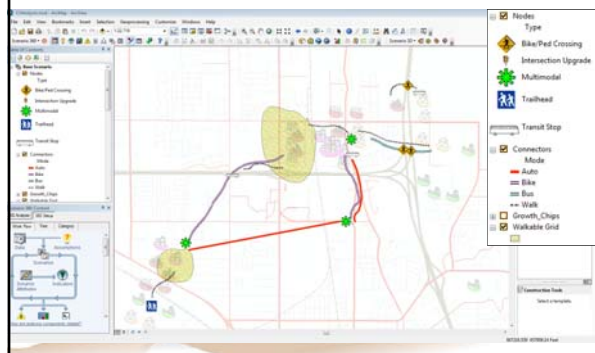
Growth Within Districts – Chip Game



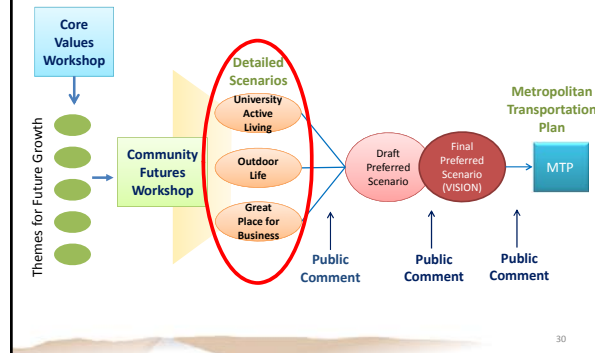
Nodes and Connectors

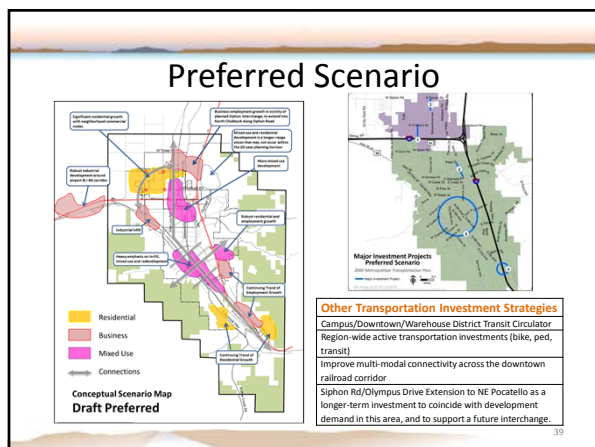
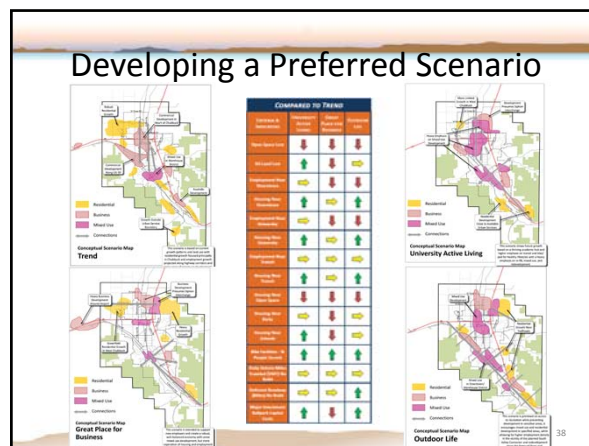
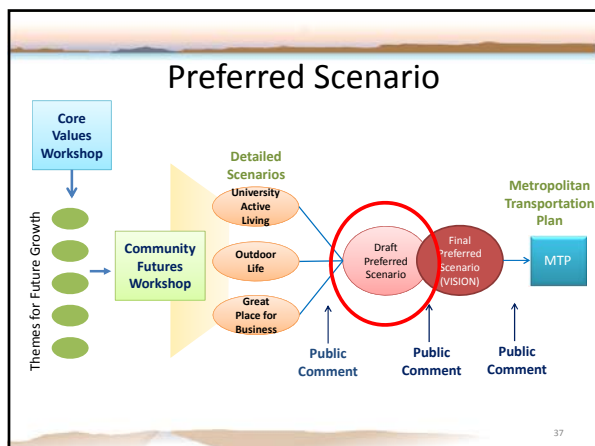


Nodes and Connectors – Sketching



Detailed Scenarios





The Portneuf Valley's 2040 Transportation System:

Vision

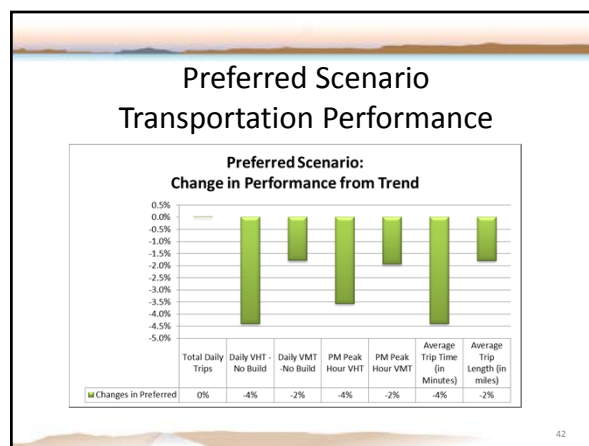
- Supports a safe, active, healthy community by providing multi-modal options for all transportation system users
- Leverages existing infrastructure to minimize public investment needed
- Reduces transportation impacts and costs through land use strategies
- Facilitates regional economic development and supports local industry
- Protects and enhances Portneuf Valley's human and natural environments

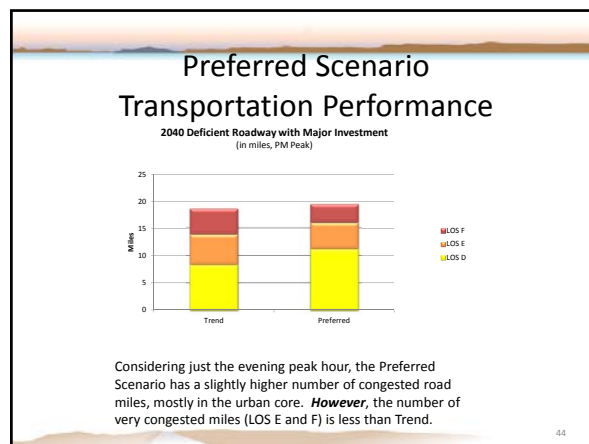
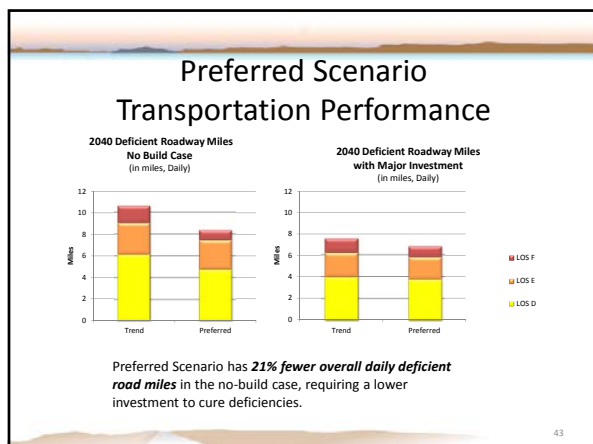
40

Preferred Scenario

- Each major goal has supporting objectives and key strategies.
- BTPO and local transportation and land use agencies will be working together to implement them.

41





Top Successes and Lessons Learned Carole's Perspective

- Scenario planning workshop was a powerful community education and engagement tool.
 - Allowed participants a greater level of influence than traditional outreach.
- Data availability and integrity is key to meaningful indicators.
 - There were other indicators we would have liked to develop, but data was a limitation.
- Just because you can measure something, doesn't mean you should.
 - Process helped winnow down the universe of performance measures to those that best aligned with BTPO's vision.

45

Successes and Lessons Learned Lisa's Perspective

- Scenario Workshop needs to engage a broad cross section of key informants & stakeholders
- Most effective & meaningful public comments received through interactive website
- Important to include land use plan/code review & policy recommendations in scope
- Scenario planning process well-suited for Comp Plan and Growth Management planning processes

46

THANK YOU!

Lisa D. Key
ldk@deainc.com
 (509) 232-8665

Carole Richardson, PE
planning@comcast.net
 509-279-2875