

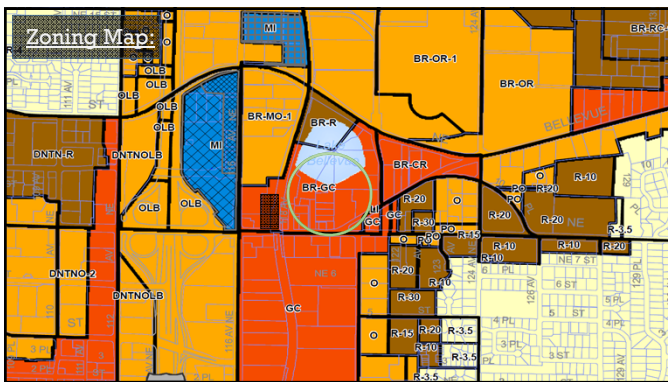
Four Areas of Interest:

- Land Use
- Urban Design
- Traffic and Transit
- Pedestrian and Bicycle Use



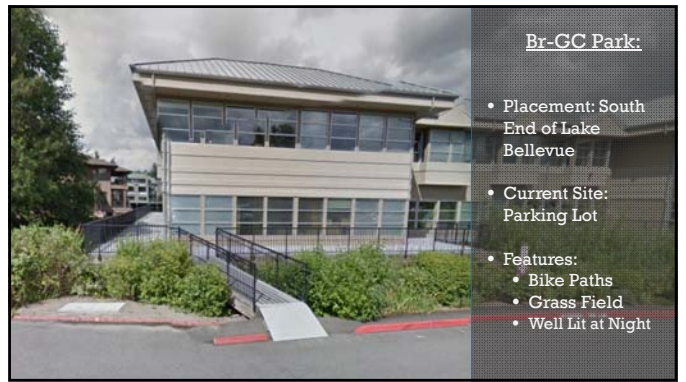
Components of Success:

- Walkability
- Sustainability
- Livability
- Balancing Multiple Interests



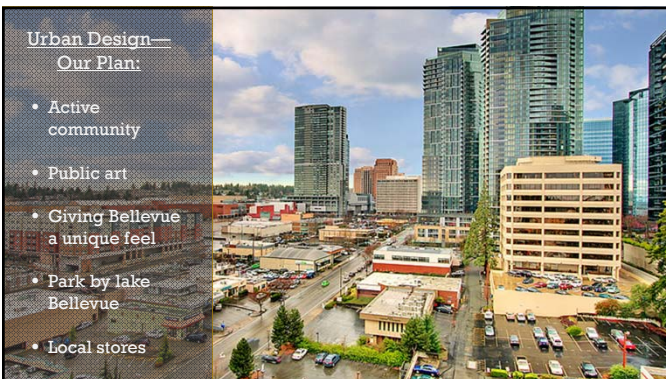
Br-GC Park:

- Placement: South End of Lake Bellevue
- Current Site: Parking Lot
- Features:
 - Bike Paths
 - Grass Field
 - Well Lit at Night



Urban Design—Our Plan:

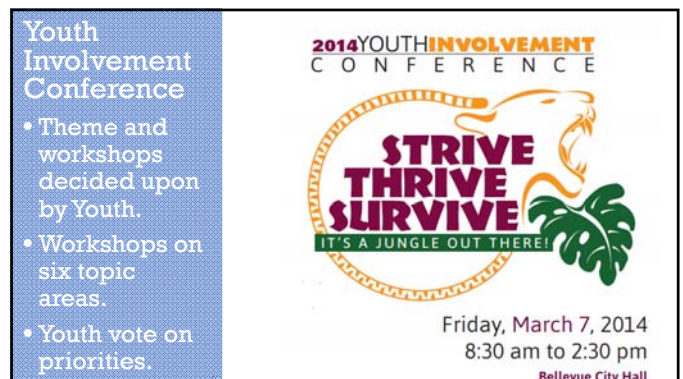
- Active community
- Public art
- Giving Bellevue a unique feel
- Park by lake Bellevue
- Local stores



Access from Bus Stops:

- Rapid Ride located across from proposed station
- Bus and Eastlink Schedules should coordinate
- Remove railroad track
 - Replace w/ elevated crosswalk





Youth Involvement Conference



Youth Involvement Conference



Youth Involvement Conference



Youth Involvement Conference



Youth Involvement Conference



Youth Involvement Conference



Youth Link Board

- Oversees the implementation of Youth Link's Action Agenda and gives a voice to youth in local government.
- Works to secure long-term funding.
- Comprised of six youth and six adults.



Youth Link Council

The main organizational body of Bellevue Youth Link. The Council tracks the progress of Action Teams, plans monthly service projects and participates in leadership workshops and training.



Action Teams

Teams focus on a specific project, event, or outcome as set out by young people and the community.



Teen Closet

Bellevue Youth Court

Objectives:

- Introduce civic responsibility to Bellevue youth and teens.
- Motivate youth to take responsibility for reducing the number of teens engaged in the juvenile justice system.
- Reduce Bellevue youth recidivism rates by supporting judicial education and civic accountability.
- Recognize and celebrate the impact of Bellevue's youth community on civic engagement and social responsibility.



Past Projects:

- Four Skate Parks
- "The Club" at Ground Zero Teen Center
- Climbing Wall and Challenge Course
- Safe Rides Program
- Youth Volunteer Core
- Teen Talk Radio
- Outspoken Newspaper



Forming our Future

Updating the Bellevue Comprehensive Plan
Bellevue Youth Council – November 6, 2013



Bellevue 2035




Bellevue Youth Council
November 6, 2013

Meeting Agenda

- 5:15 Welcome and Introduction
- 5:25 Small Group Discussion
- 5:55 Report Back to the Large Group

Imagine Bellevue in 2035...

How old will you be?
Where will you live?
Who will your neighbors be?
Where will you work?
Where will you spend your free time?
How will you get to the places you want to go?
What will be important to you?



What kind of place do you want Bellevue be in 2035?

Forming Our Future

Six topic areas contain statements that may describe Bellevue in 2035.

- Natural and Sustainable
- Designed for People
- Strong Economic Centers
- Arts, Culture, and Diversity
- Healthy and Secure Community
- Aspirational Government

We want to know what is most important to you and what you think will take the most effort to accomplish. *If you think something has been left out, there is a space to write in your own statement.* Your input will be used to create the 2035 Vision for Bellevue's Comprehensive Plan.

Small Group Discussion

Your group will be given one of the topics to review:

- Introduce yourselves and state one thing that will describe 2035.
- Pick someone to take notes and report back at the end.
- Work as a group to pick two statements that are **MOST** important for the future.
- Work as a group to pick two statements that are important **AND** will take the most effort to accomplish by 2035.
- If anything important has been left out, write your own statement.
- Report your results to the whole group (use about 2-3 minutes).

Be sure to turn in the notes and packets from your group before your leave.

FORMING...FUTURE

Possible inspiration

In 2035 Bellevue might be

A Tropical paradise, an Alpine village,



a Dystopian Society, or

the Happiest Place on Earth?

Natural and Sustainable	Designed for People	Strong Economic Centers	Healthy and Secure Community	Arts, Culture, and Diversity	Aspirational Government
<p>Bellevue is a vibrant, diverse, and inclusive community that values its natural resources and promotes sustainable development.</p> <p>Bellevue is a vibrant, diverse, and inclusive community that values its natural resources and promotes sustainable development.</p> <p>Bellevue is a vibrant, diverse, and inclusive community that values its natural resources and promotes sustainable development.</p>	<p>Bellevue is a vibrant, diverse, and inclusive community that values its natural resources and promotes sustainable development.</p> <p>Bellevue is a vibrant, diverse, and inclusive community that values its natural resources and promotes sustainable development.</p> <p>Bellevue is a vibrant, diverse, and inclusive community that values its natural resources and promotes sustainable development.</p>	<p>Bellevue is a vibrant, diverse, and inclusive community that values its natural resources and promotes sustainable development.</p> <p>Bellevue is a vibrant, diverse, and inclusive community that values its natural resources and promotes sustainable development.</p> <p>Bellevue is a vibrant, diverse, and inclusive community that values its natural resources and promotes sustainable development.</p>	<p>Bellevue is a vibrant, diverse, and inclusive community that values its natural resources and promotes sustainable development.</p> <p>Bellevue is a vibrant, diverse, and inclusive community that values its natural resources and promotes sustainable development.</p> <p>Bellevue is a vibrant, diverse, and inclusive community that values its natural resources and promotes sustainable development.</p>	<p>Bellevue is a vibrant, diverse, and inclusive community that values its natural resources and promotes sustainable development.</p> <p>Bellevue is a vibrant, diverse, and inclusive community that values its natural resources and promotes sustainable development.</p> <p>Bellevue is a vibrant, diverse, and inclusive community that values its natural resources and promotes sustainable development.</p>	<p>Bellevue is a vibrant, diverse, and inclusive community that values its natural resources and promotes sustainable development.</p> <p>Bellevue is a vibrant, diverse, and inclusive community that values its natural resources and promotes sustainable development.</p> <p>Bellevue is a vibrant, diverse, and inclusive community that values its natural resources and promotes sustainable development.</p>

Other Youth Engagement:

- Internships
- Youth Artists
- Environmental Stewards



Challenges of Engaging Youth?

- Overcommitted
- Move on quickly
- Steep learning curves
- Naivety about government
- Limited funding/capacity



How to Overcome Challenges?

- Partner with schools
- “Lighter quicker and cheaper” projects
- Establish citywide Youth program

