



SPOKANE HEALTH SCIENCES CAMPUS MASTER PLAN

APA Washington Conference
October 2014



Existing Campus Views



Existing Campus Views



WSU & EWU Campuses



WSU Health Sciences Campus in Spokane

- Washington State University and Eastern Washington University share the 47.2-acre campus on the edge of downtown Spokane.
- The WSU Spokane campus was designated the University's health science campus by the Board of Regents in 2010.
- The WSU Spokane Campus houses the University's Colleges of Nursing, Pharmacy and Medical Sciences.

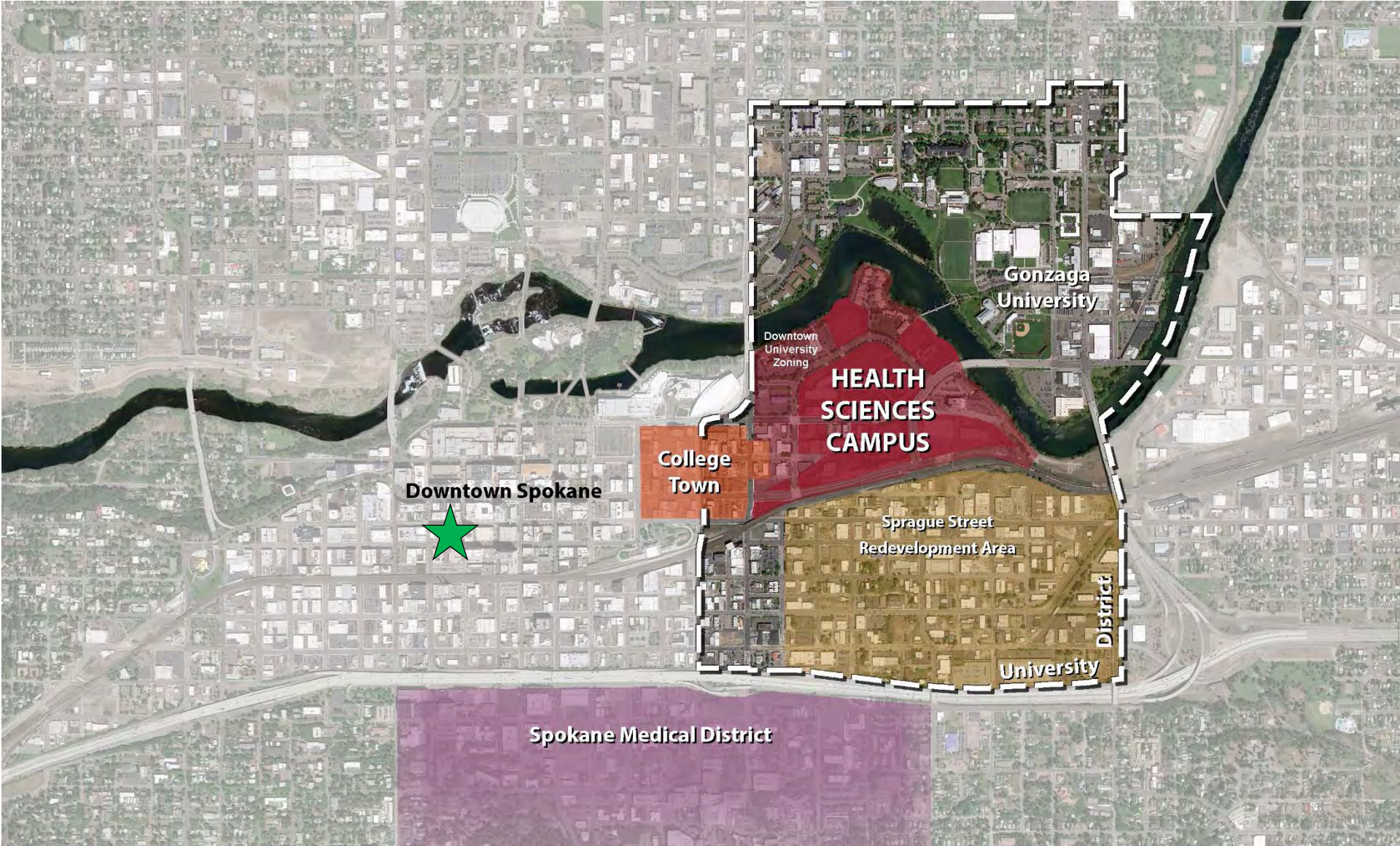


WSU Health Sciences Campus in Spokane

- Spokane's top-notch medical community
- WSU's strength as a major research and land-grant university and their long history of teaching the health professions
- The opportunity to bring together complementary strengths of multiple higher education institutions
- A focus on leveraging applied research for a measurable impact on the health of individuals and communities
- The opportunity to build a campus with multidisciplinary programs to have an innovative culture in a prime urban location that serves a large rural region.



WSU Spokane Campus Context



WSU Campus Ownership



Existing Campus Development



WSU Vision: Academic, Community & Support Services

- 3 of the 12 University's Colleges are located on WSU Spokane
- Projected growth of Colleges of Pharmacy, Medical Sciences and Nursing (Doctoral, Nurse Practitioner)
- University District Health Clinic
- Campus-wide initiative to sustain health with a community health perspective
- Student life & campus amenities desired
- Focus on interprofessional, simulation and clinical teaching/research
- K12 Biomedical STEM Center
- Enhance student services and career development

EWU Vision: Academic, Community & Support Services

- Allied health programs during day & Graduate studies at night
- Newly created College of Health Science & Public Health
 - Dental Hygiene
 - Regional Initiative Dental Education (RIDE) cohort expansion
 - OT / PT
 - Communication Disorders
 - Public Health & Health Services Administration
- College of Business & Public Administration
- Practice-based research space needed

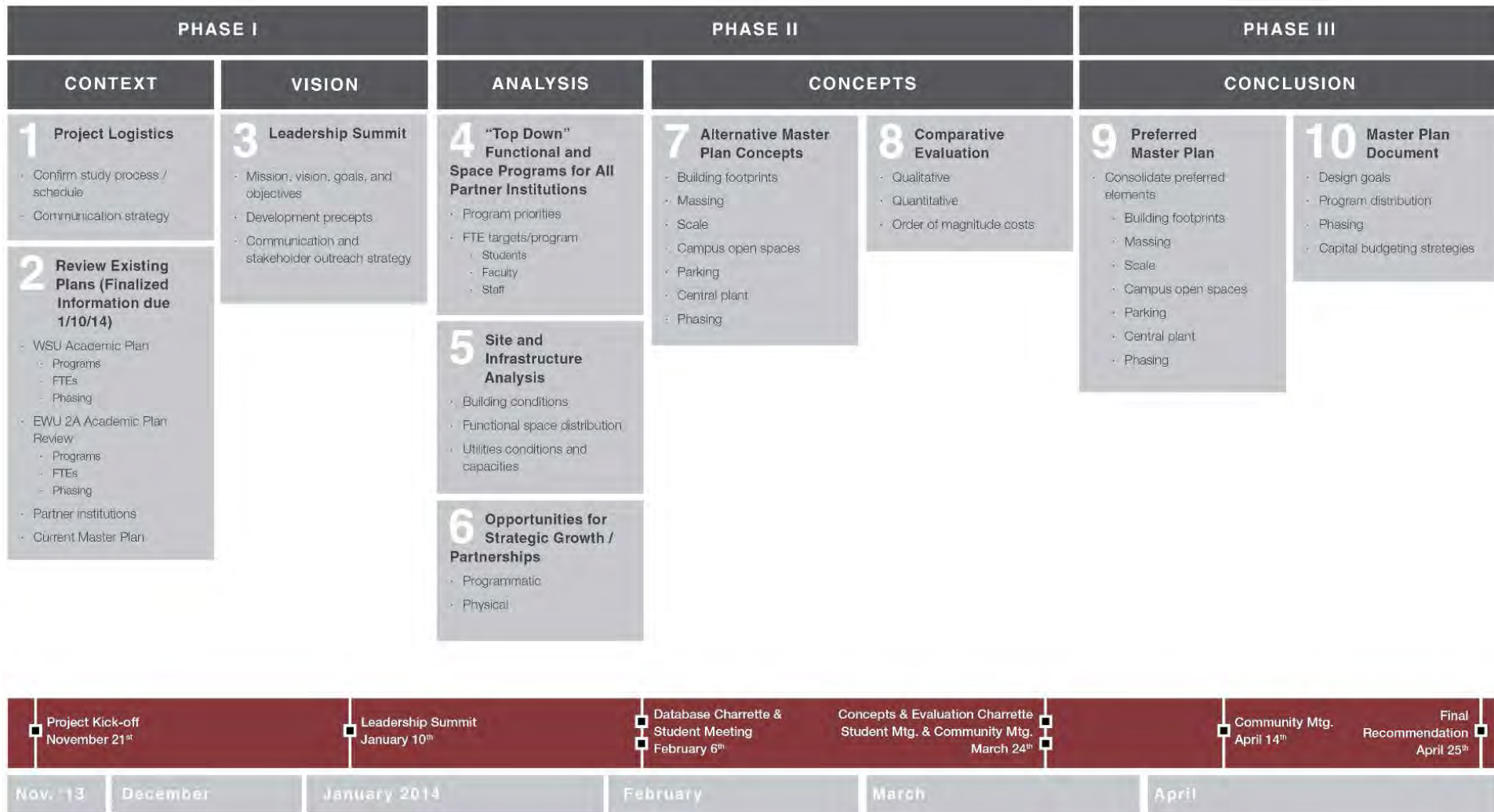
Existing Campus Views



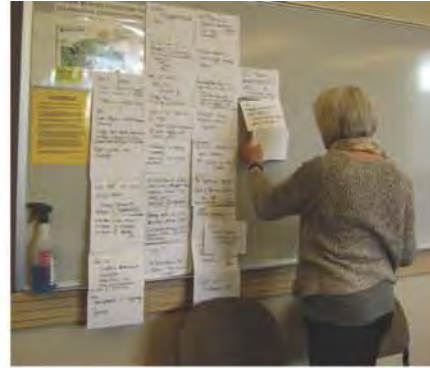
Existing Campus Views



Master Plan Study Process



Early Visioning



Vision & Themes that Guided Campus Leadership

- Continue to build a world-class Health Sciences Education & Research Campus
- Create an integrated Campus community with a clear identity
- Prioritize Campus open space
- Connect with greater Spokane, and specifically the University District
- Create a meaningful connection with the Spokane River

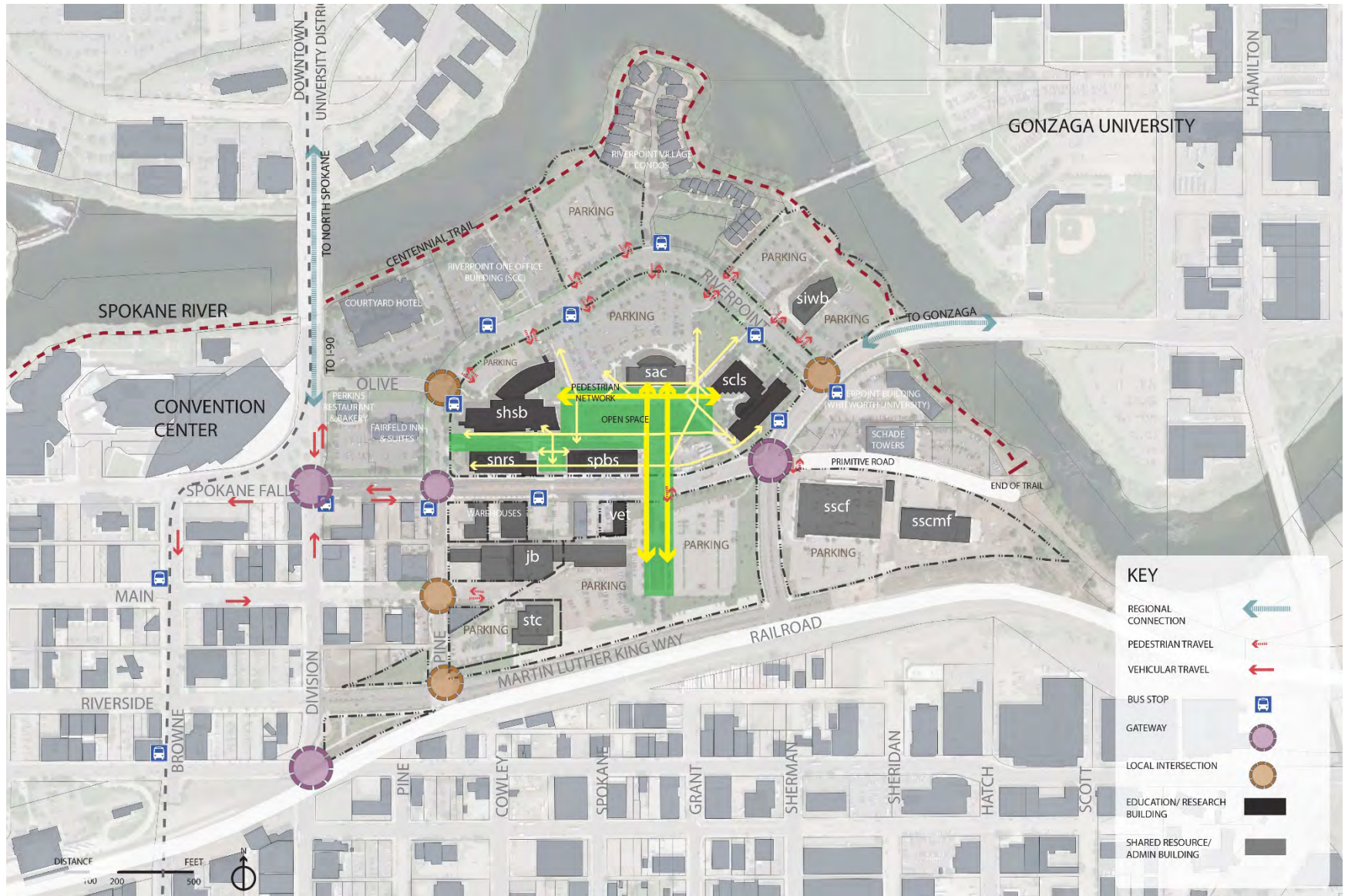


Stakeholder Outreach

WSU worked closely with its Spokane partners:

- Eastern Washington University
- Gonzaga University
- Whitworth University
- Community Colleges of Spokane (CCS)
- City of Spokane
- Downtown Spokane Partnership
- Greater Spokane Inc.
- University District
- Local residents and Developers
- Campus staff, faculty & students

Campus Analysis



Phased Program Needs



2024 MASTER PLAN PROGRAM NEEDS: 470,700 - 490,700 GSF
2014 - 2024



LONG TERM PROGRAM NEEDS: 132,600 GSF
2024 - 2034



FUTURE PROGRAM NEEDS: 223,000 GSF
2034 & beyond

Legend

- EWU = Eastern Washington University
- GCRC = General Clinic Research Center
- RIDE = Regional Initiative Dental Education
- SPRC = Sleep Performance Research Clinic

Phased Program Needs: 2024 Projects



NEW SUPPORT/PARKING STRUCTURE

SUPPORT 20,000 GSF facilities	PARKING STRUCTURE 220,000 GSF 580-600 stalls (parking demand, timing, to be determined)
--	--

NON-STATE FUNDED

NEW RESEARCH BUILDING

INTERDISCIPLINARY RESEARCH 40,000 GSF: 18 PIs special core labs	VIVARIUM EXPANSION 30-45,000 GSF	IMMERSIVE LEARNING 19,600 GSF simulation, v.r. classroom, theaters	EDUCATION 12,700 GSF labs, groups	OFFICE & CONFERRING 38,000 GSF faculty/staff, student offices & conferencing	SUPPORT 16,000 GSF
---	--	--	---	--	------------------------------

STATE FUNDED

EXPAND/RENOVATE JENSEN-BYRD

EDUCATION 2,500 GSF	OFFICES 7,050 GSF	CAMPUS AMENITIES 41,200 GSF food services, fitness, retail, campus & community conferencing/event space, economic incubator, student gov't/ clubs, faculty space	SUPPORT 25,000 GSF I.T., data center, building support
-------------------------------	-----------------------------	--	--

NON-STATE FUNDED

SPOKANE TEACHING HEALTH CENTER

FAMILY, INTERNAL MEDICINE & PSYCHIATRY phase 1: 40,000 GSF	phase 2 15,000 GSF pediatrics
--	----------------------------------

NON-STATE FUNDED

NEW EDUCATION/CLINICAL RESEARCH

EWU 14,800 GSF rehab, o.t., p.t.	SLEEP DISORDER CLINIC 20,000 GSF	SLEEP PERFORMANCE CLINIC 15k GSF replacement	GENERAL CLINICAL RESEARCH CENTER 15-20,000 GSF	EDUCATION 39,300 GSF auditorium, small group rooms, public health lab	OFFICE 12,350 GSF	SUPPORT 14,200 GSF
--	--	--	--	---	-----------------------------	------------------------------

STATE FUNDED

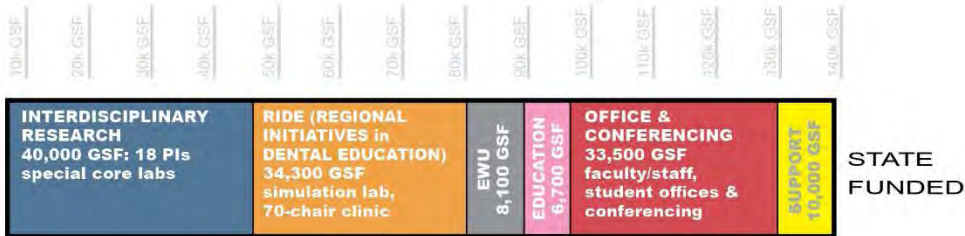
Legend

- EWU = Eastern Washington University
- GCRC = General Clinic Research Center
- RIDE = Regional Initiative Dental Education
- SPRC = Sleep Performance Research Clinic

Phased Program Needs: Future Projects

pbs3

NEW RESEARCH/ RIDE CLINIC



STATE FUNDED

Spokane Health Sciences Campus 10-Year Master Plan Update: FUTURE PROJECTS (2034 & beyond)

Washington State University & Eastern Washington University

NEW RESEARCH/ EDUCATION



STATE FUNDED

NEW CLINIC/ RESEARCH



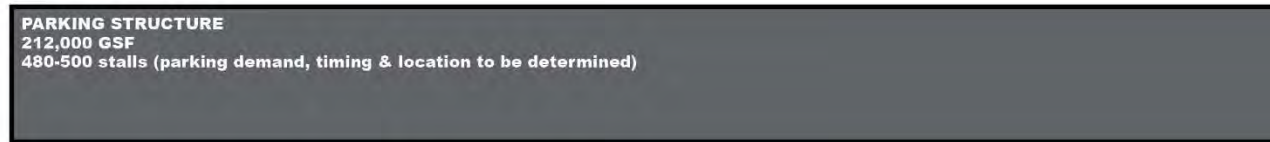
NON-STATE FUNDED

NEW CAMPUS AMENITIES



NON-STATE FUNDED

NEW PARKING STRUCTURE

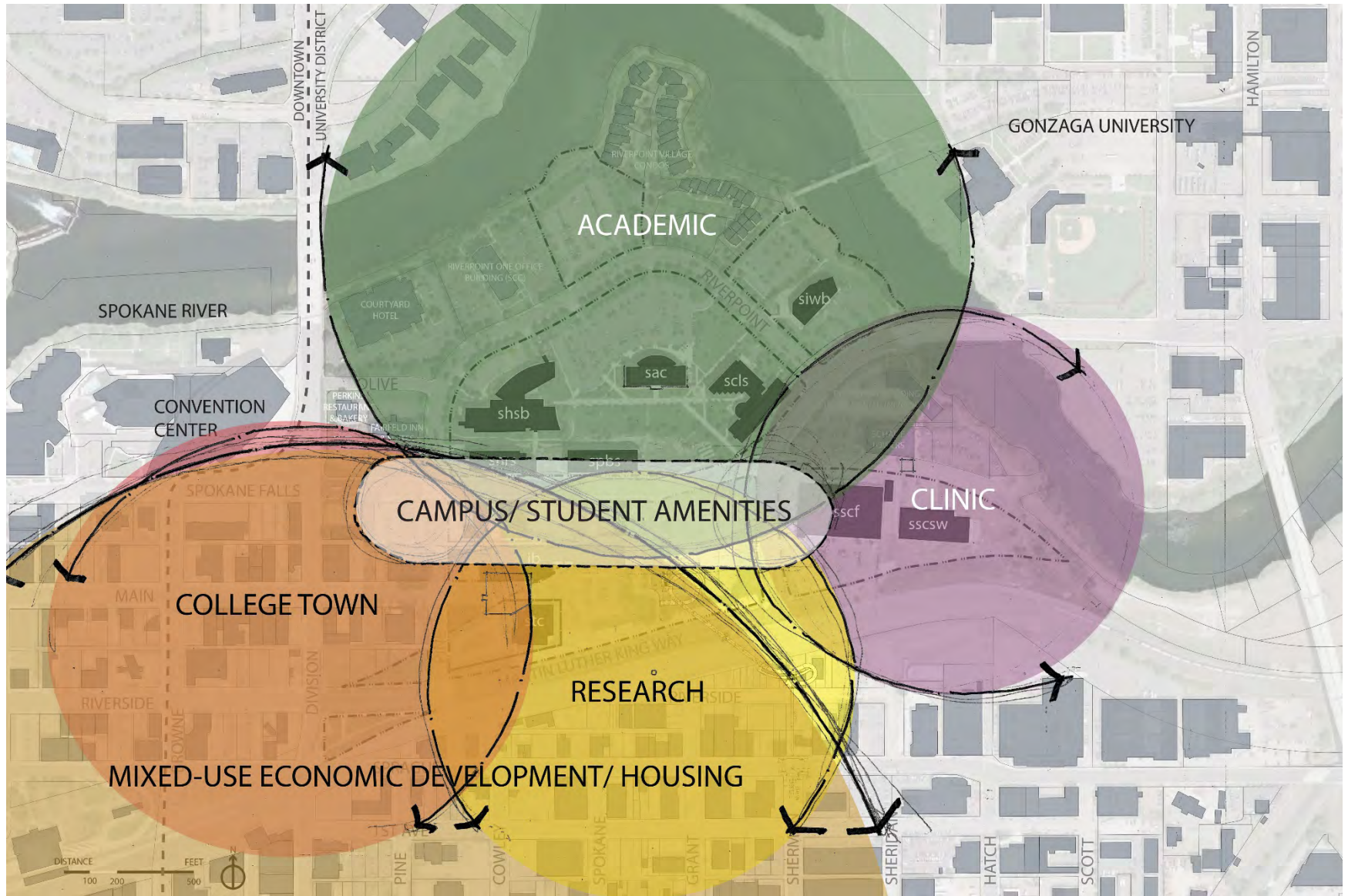


NON-STATE FUNDED

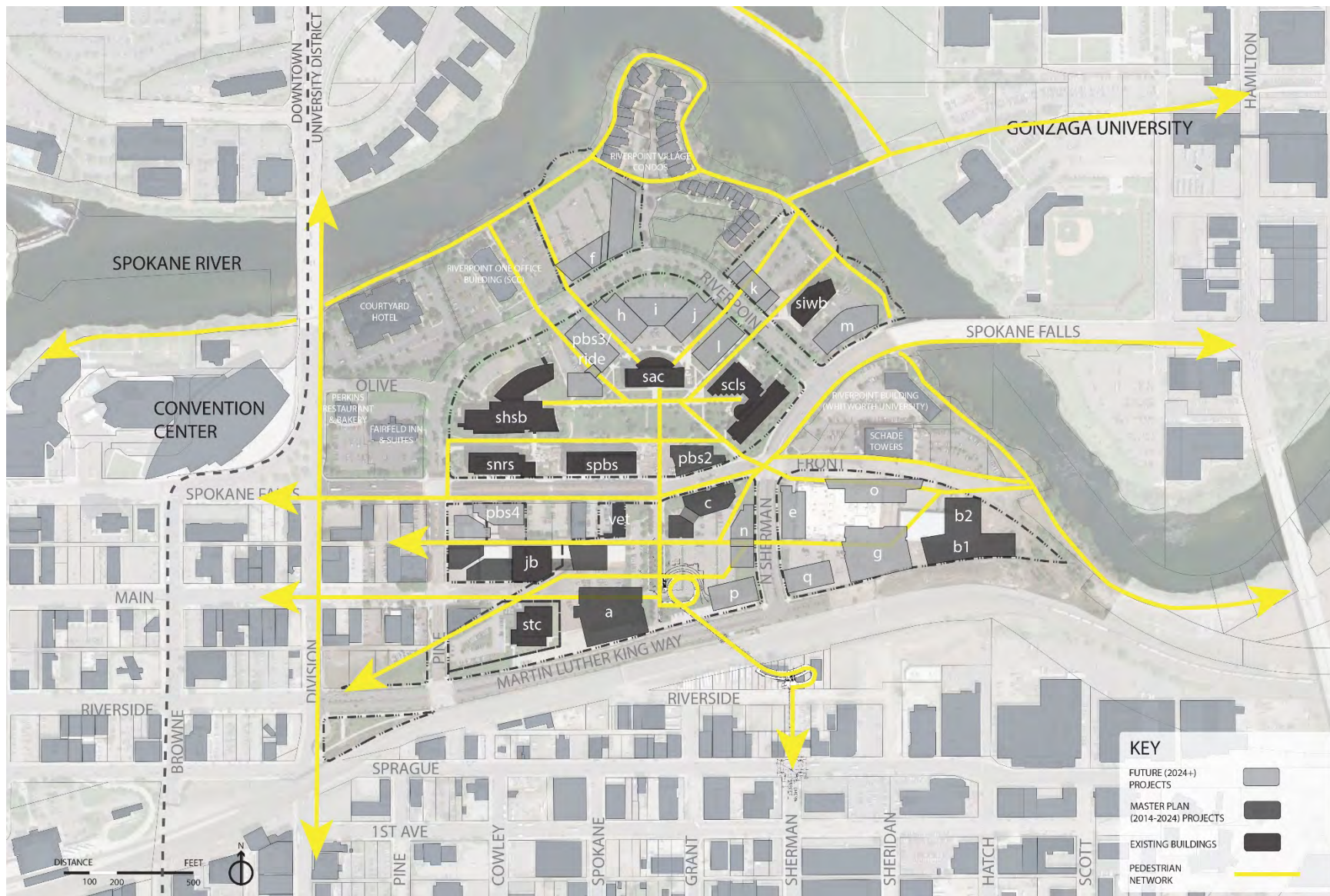
Legend

- EWU = Eastern Washington University
- GRC = General Clinic Research Center
- RIDE = Regional Initiative Dental Education
- SPRC = Sleep Performance Research Clinic

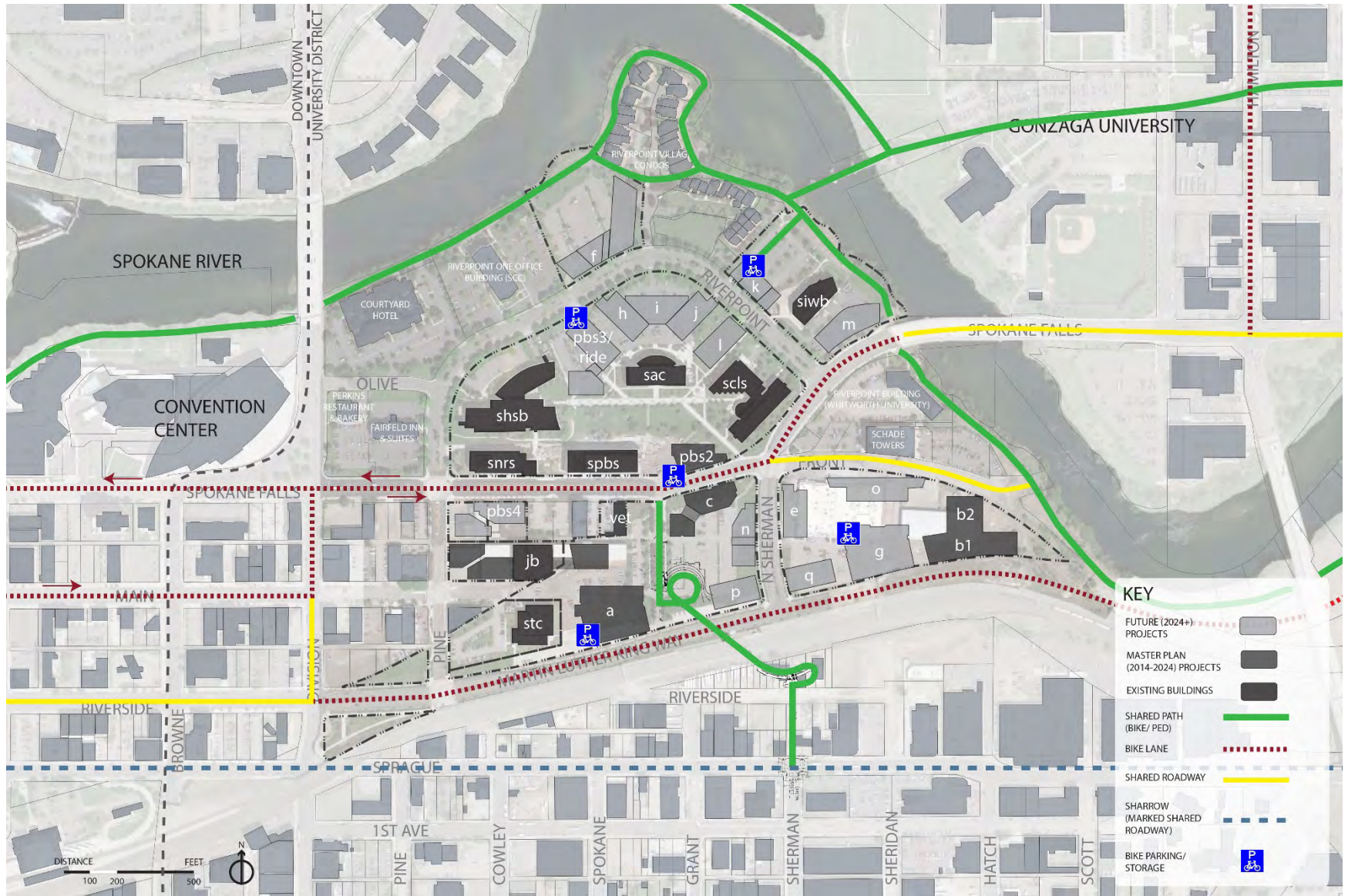
Organizing Framework – “Centers of Excellence”



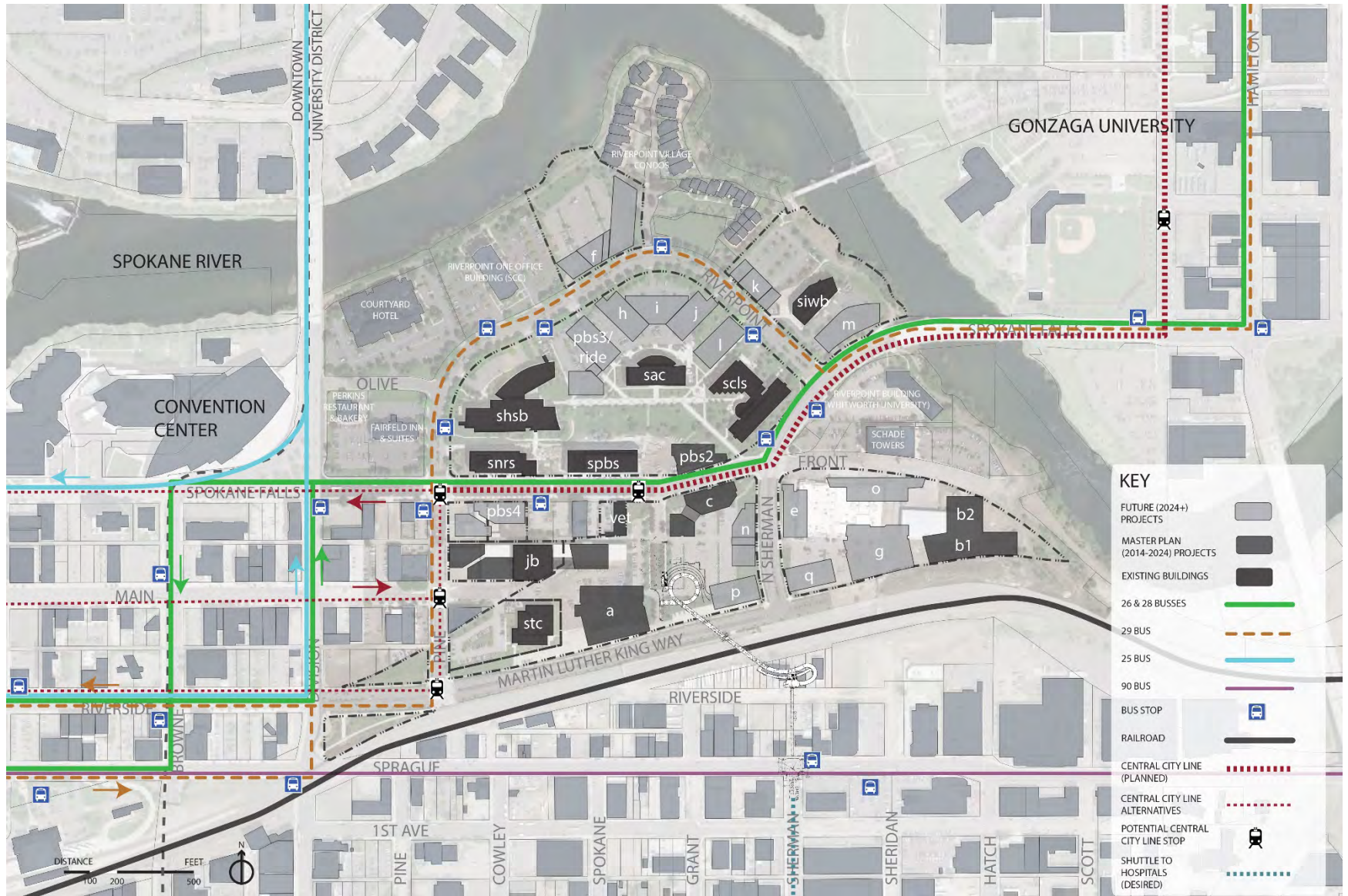
Master Plan: Pedestrian Circulation



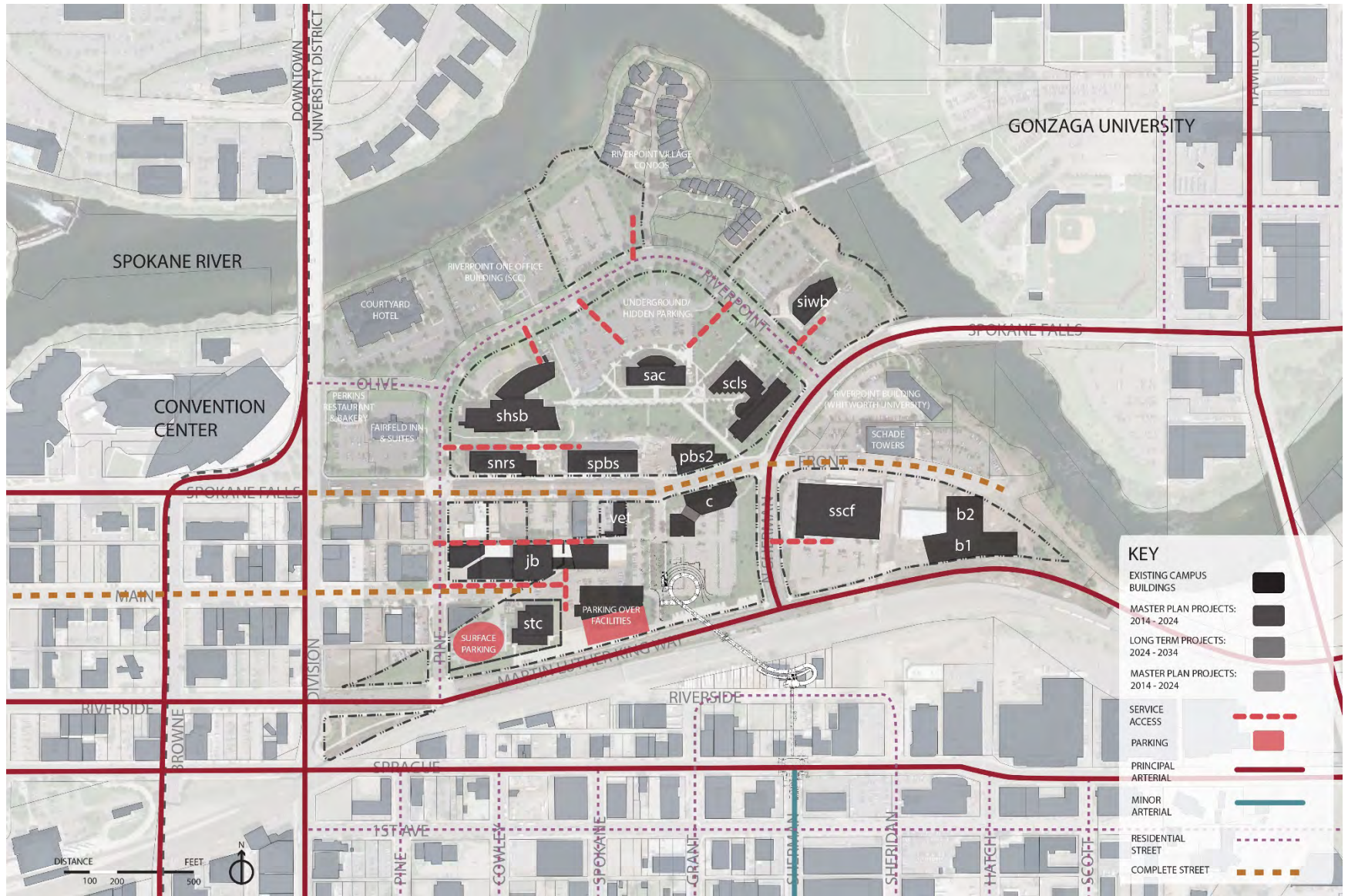
Master Plan: Bicycle Circulation



Master Plan: Transit Circulation



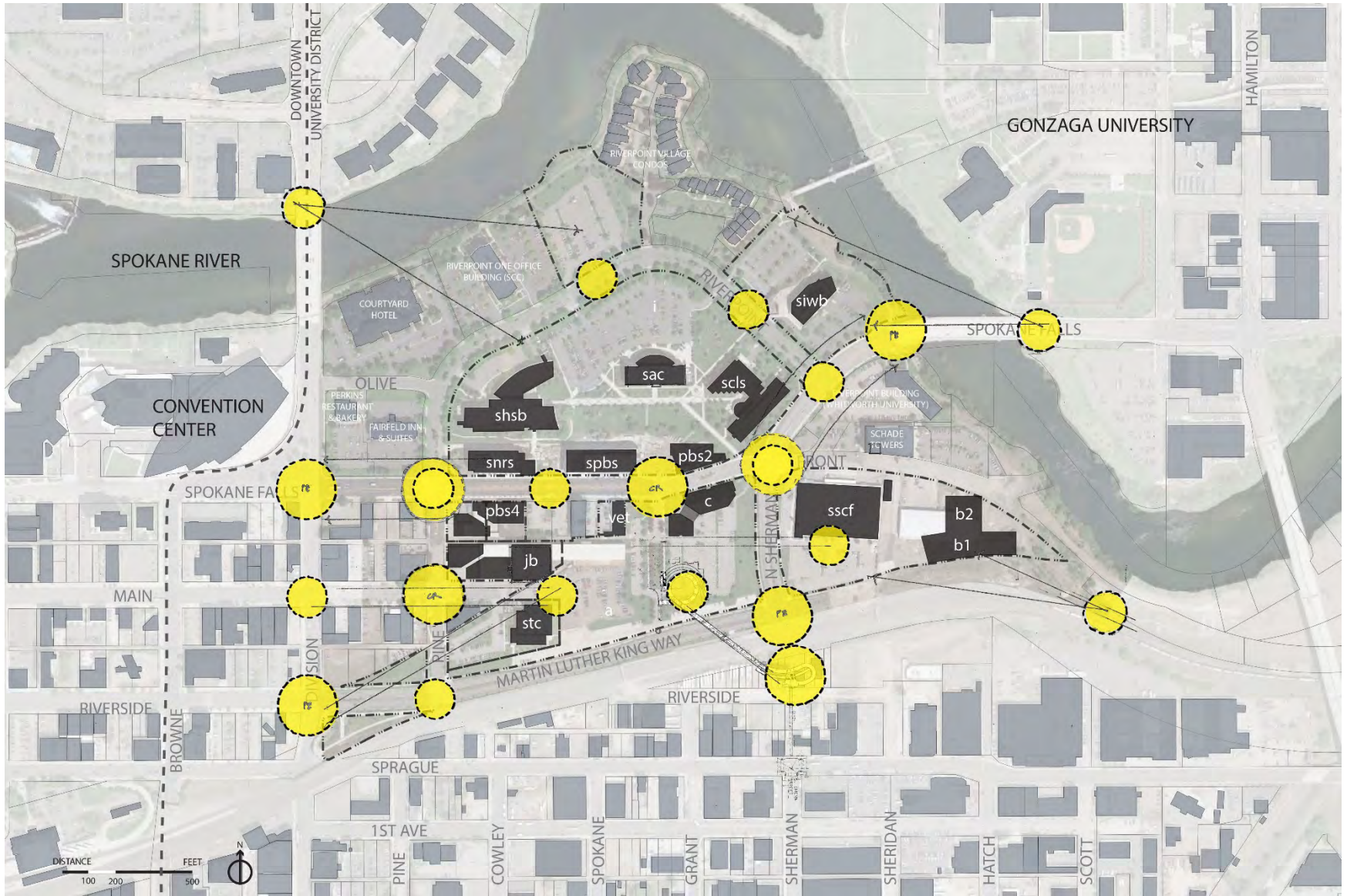
Master Plan: Vehicle Circulation



Master Plan: Open Space



Master Plan: Gateways & Views

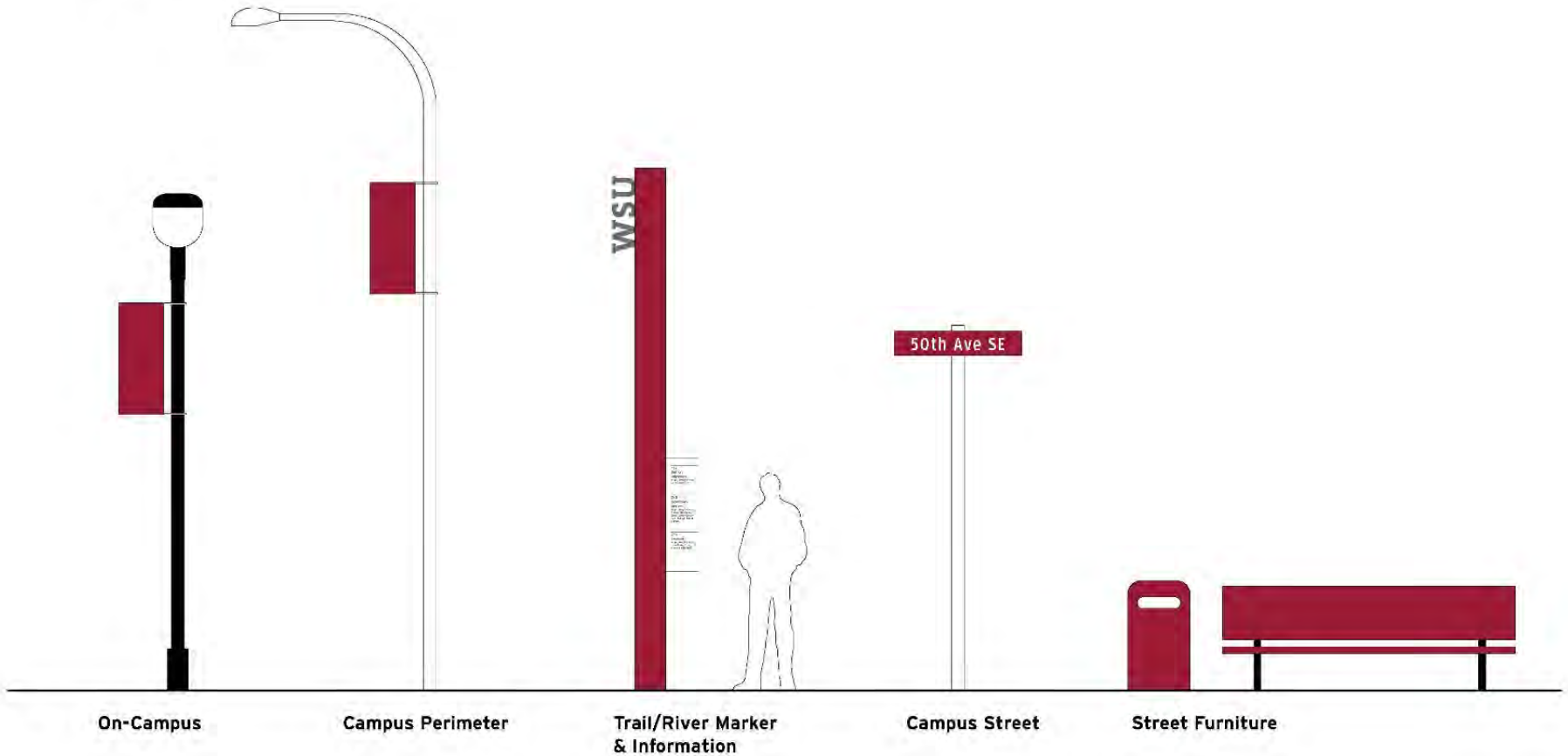


Master Plan: Potential Signage Locations



Master Plan: Potential Branding & Signage

1 Cues (Branded) & Boundary



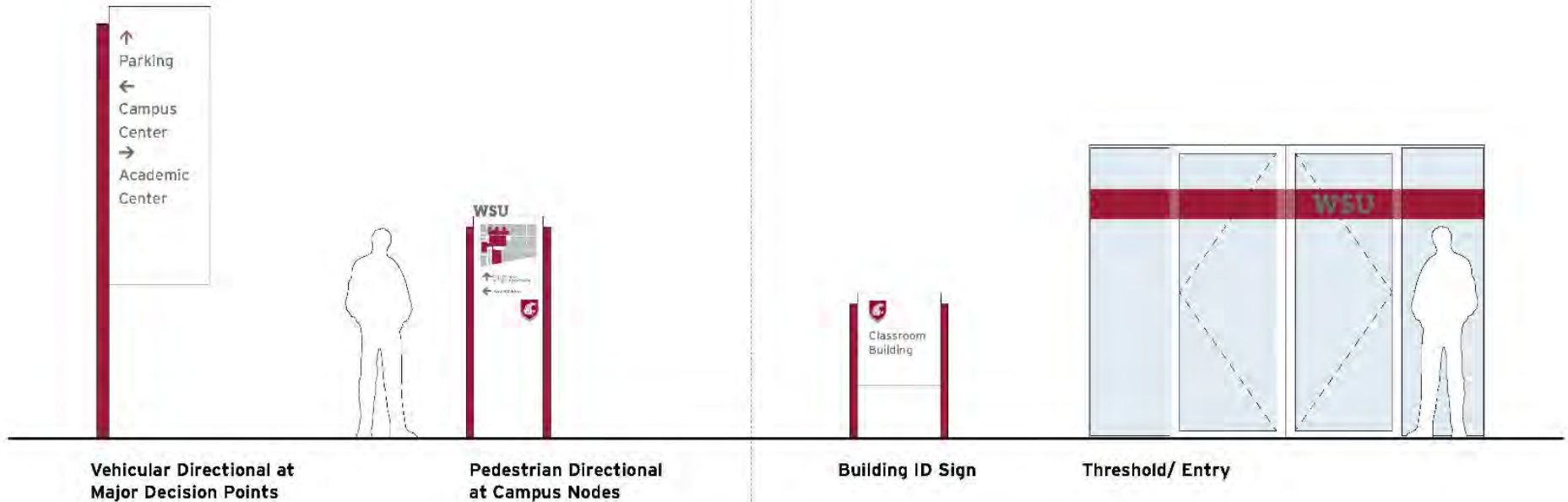
Master Plan: Potential Branding & Signage

2

Directional/ Wayfinding

3

Building Entry/ Thresholds



Master Plan: Potential Branding & Signage

6 Distance Markers



Illuminated Light Bar



Existing Campus Views



Existing Campus Views



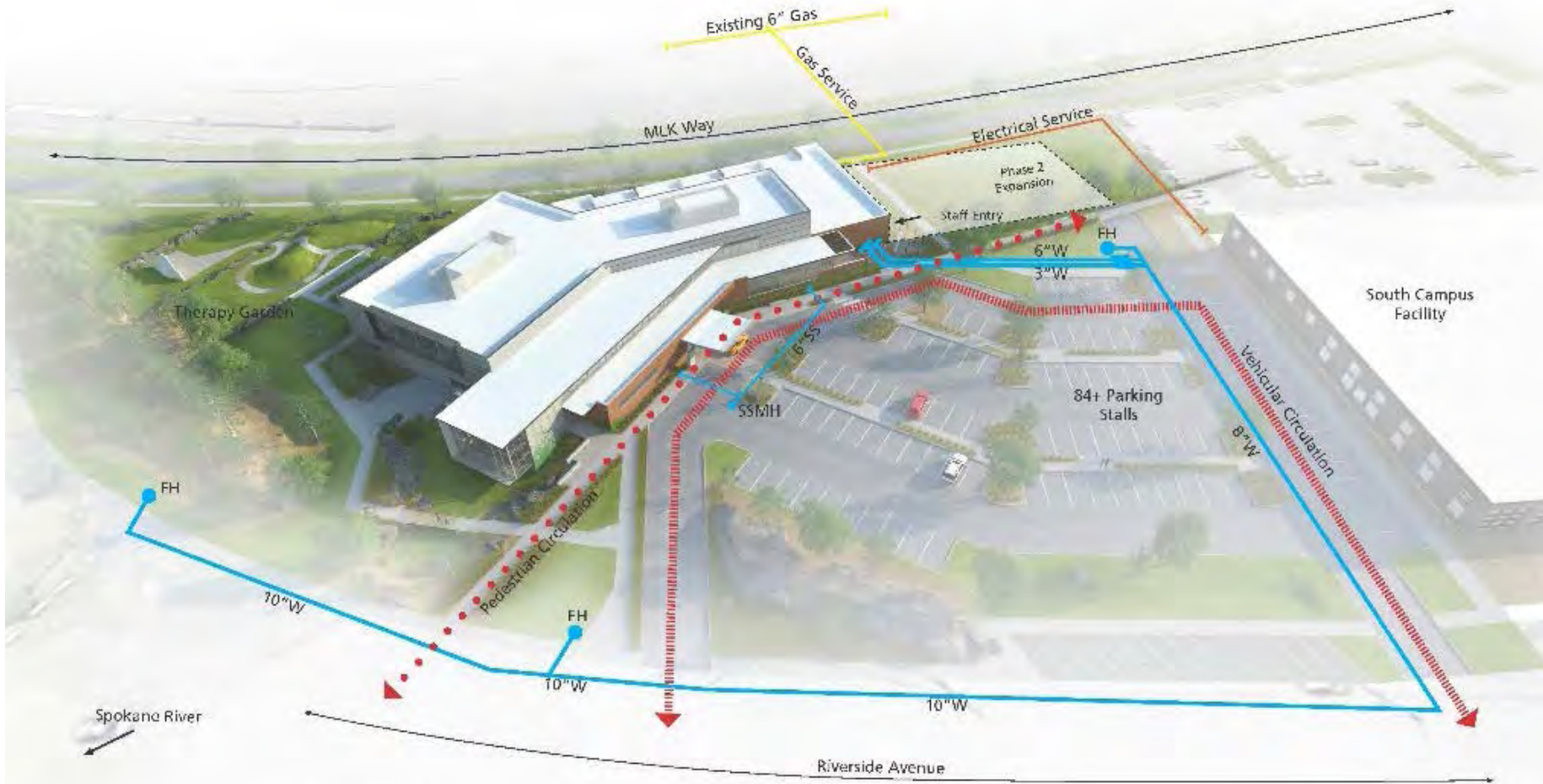
Master Plan: Potential Development Sites 2014-2024



Master Plan: Phasing



University District Health Clinic



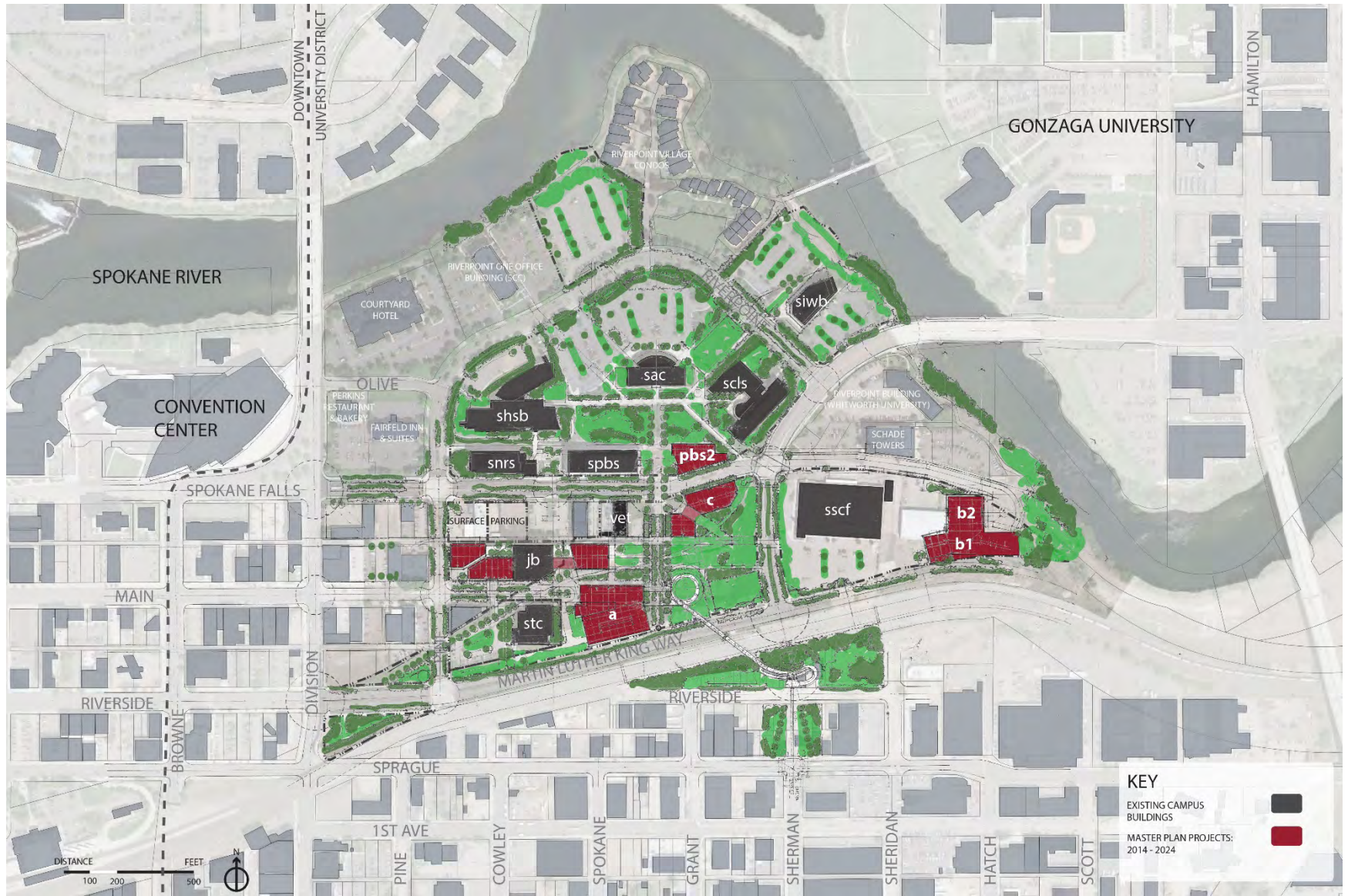
University District Health Clinic



University District Health Clinic



Public Private Partnership Opportunities



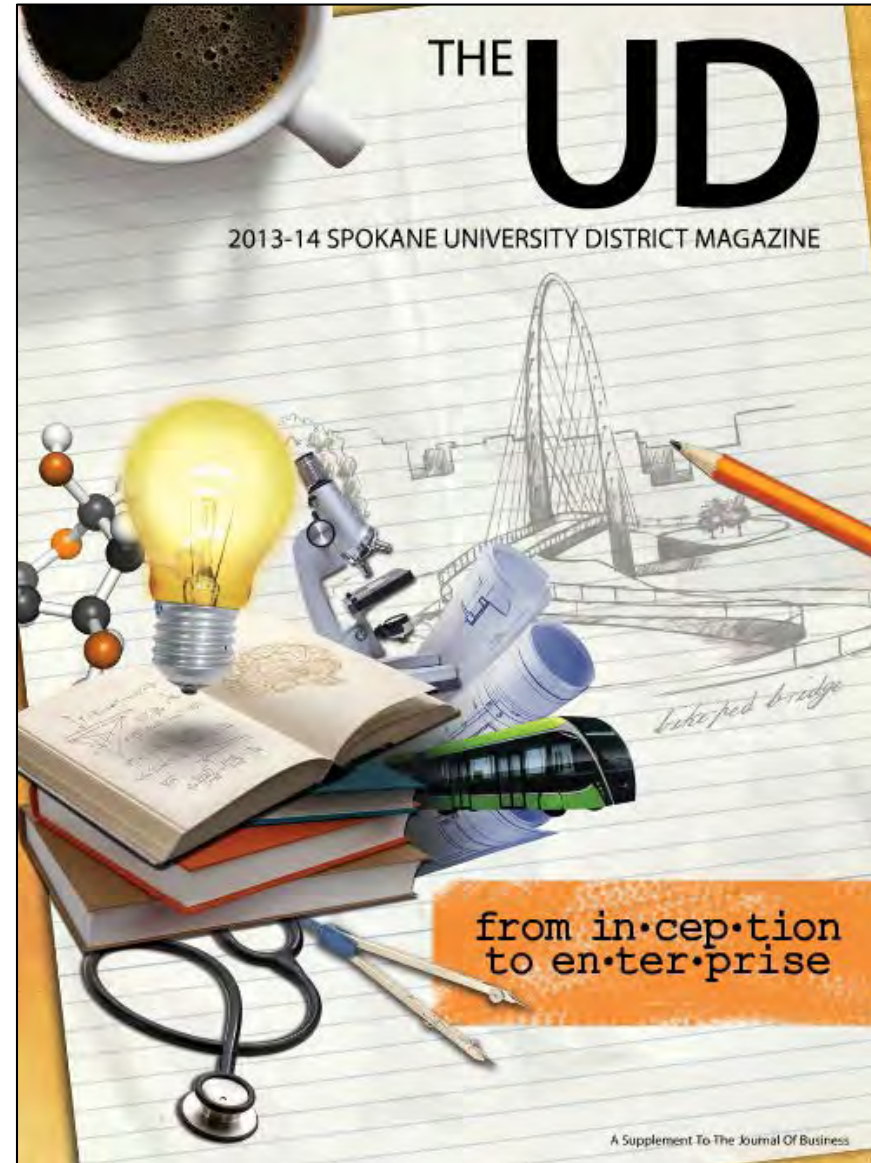
Public Private Partnership Opportunities



University District Partnership

The University District Development Association (UDDA) is a 501 (c) 3 non-profit organization that works to achieve the implementation of the 2004 University District Strategic Master Plan.

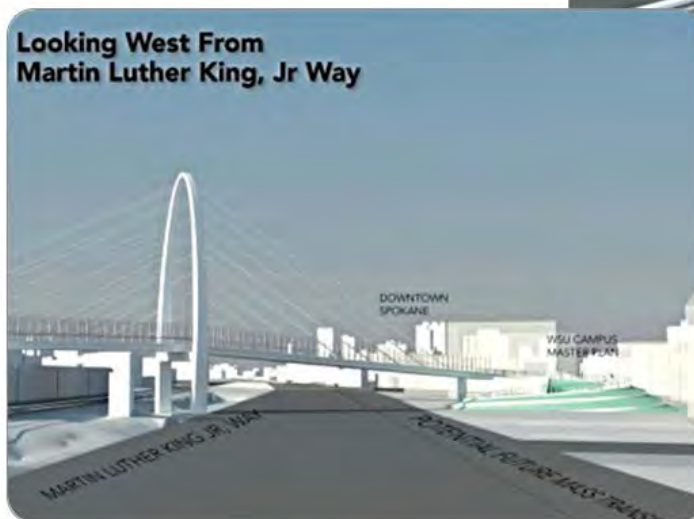
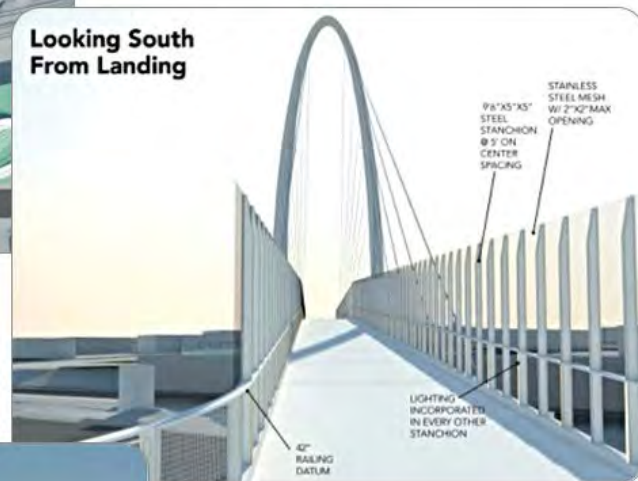
The UDDA Board of Directors has representation from the academic institutions within the District, as well as other leadership important to the revitalization and development of the area.



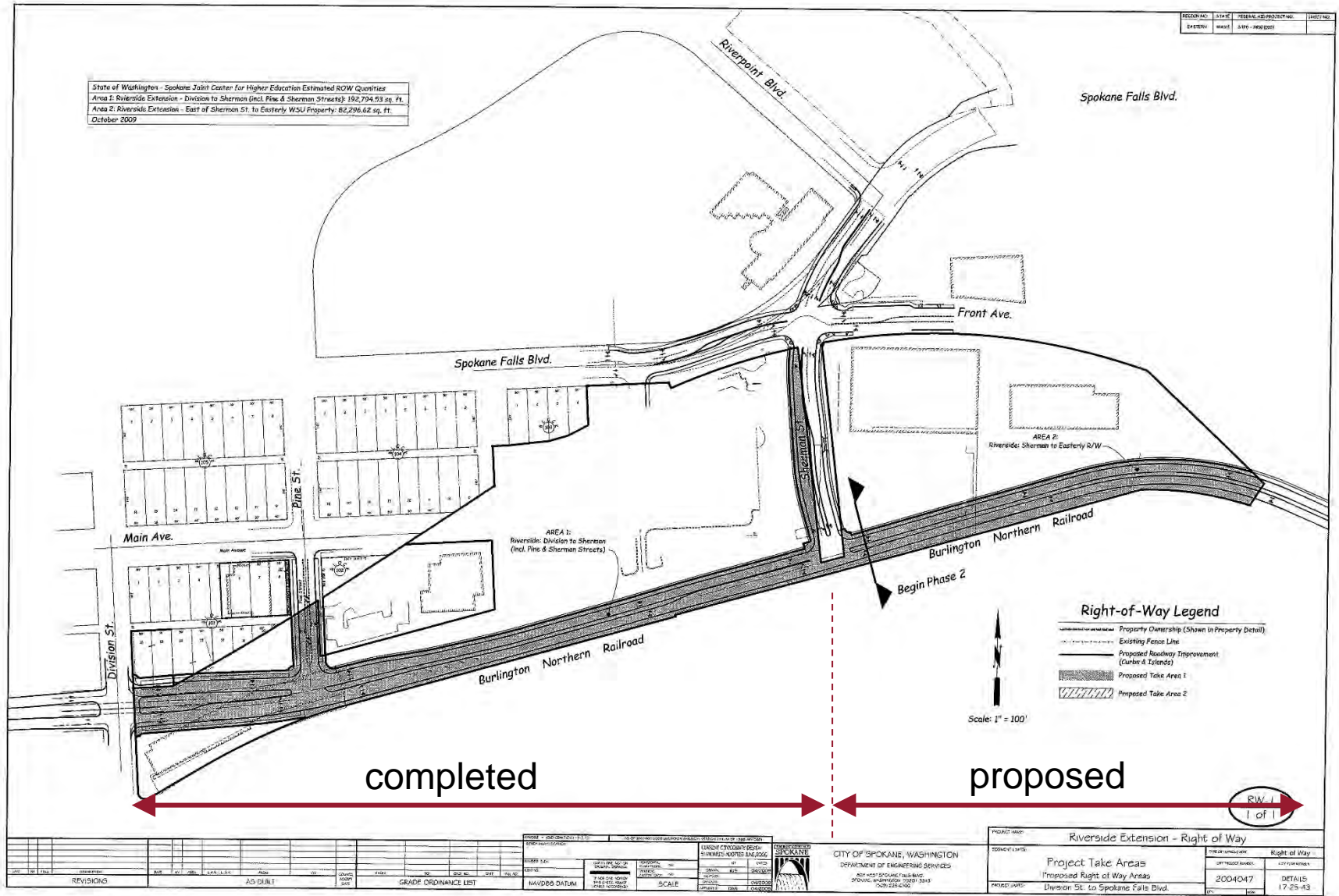
Pedestrian & Bicycle Bridge

The Burlington Northern Santa Fe bisects the University District and separates the southern commercial and multi-use area from the northern institutional area breaking up the connectivity between the two.

This pedestrian bicycle bridge is the critical missing link for this developing corridor and will provide an iconic sense of place.



MLK Way Improvements



WSU Health Sciences Campus Master Plan, 2024





Thank you!