

Reaching the Future: Centering Youth in Community Engagement


APA Washington Youth in Planning Task Force

APA Washington 2022 Conference | October 13, 2022 | Vancouver, WA



Session Overview

- Welcome
- Presentations
- Hands-on activity
- Audience Q&A and opportunity to share
- Session Wrap-Up



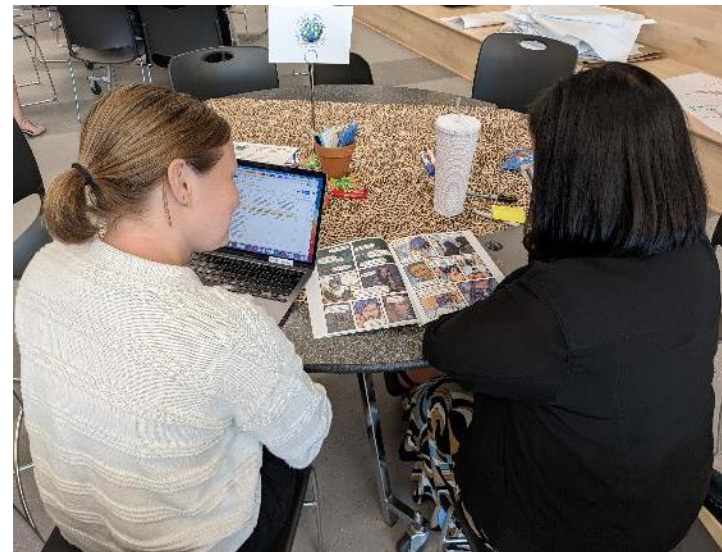
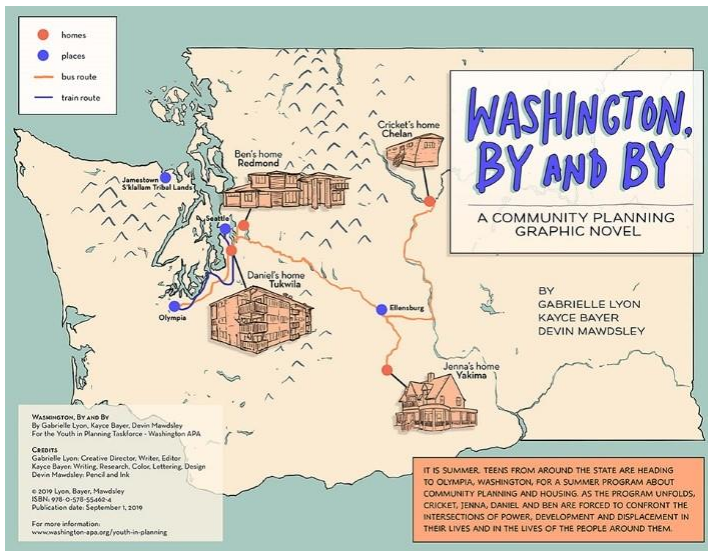
**Share your
questions, ideas,
and success
stories here!**

APA WA Youth In Planning Task Force

We aim to:

- Raise youth awareness of the importance of their voice informing our future, and
- Provide resources for teachers, planners, and public officials to engage youth in planning processes

[Visit washington-apa.org/youth-in-planning for ideas, resources, and more!](http://washington-apa.org/youth-in-planning)



Planners You'll Hear From Today

- Alex Hunt, City of Burien
- Evan Hietpas, City of Edgewood
- Shelley Denison, City of Sandy, OR
- Kate Neese, City of Bellevue
- Donna deBit, City of Spokane

A group of seven people, including six young women and one man, are standing outdoors in front of a large, leafy tree. They are dressed in casual to semi-formal attire. The text "Presentations from Planners" is overlaid in white, centered on the image. The background shows a grassy area and a building in the distance.

Presentations from Planners



Youth Engagement in Burien

Alex Hunt, Planner



- What relationships has your organization built that allowed you to conduct successful youth engagement?

If you do not have this direct experience, what community relationships might allow your organization to conduct meaningful youth engagement in the future?



Ambaum and Boulevard Park Community Plans



Stormfest 2022



Alex Hunt

City of Burien

Planner

alexh@burienwa.gov

206-439-3152



EDGEWOOD EXPERIENCE



cityofedgewood.org/404

If given a day to work with high school students, what would teach them about?









Evan Hietpas

City of Edgewood

Associate Planner

evan@cityofedgewood.org

253-831-4254

Youth are the best ambassadors

You

Deputize

scout troop to get other

- Take a survey

- High Schoolers go hosting an event

**Use required
service
hours**

- Class designs an open house

**Use their
creativity**



Use the academic schedule

Plan a term ahead

Think about breaks & holidays

Don't do anything during exams

Go to where they are when they are there

Educate, then ask for feedback

Explain everything

- Give a class and then ask them to survey

• Run a workshop and workshop-in-a-bag.

Give them tools

- Play a game and ask them to modify it

Engage in conversation

Kate Neese

City of Bellevue

Senior Planner

kneese@bellevuewa.gov

425-452-2042



Shelley Denison

City of Sandy, OR

Associate Planner

sdenison@ci.sandy.or.us

503-783-2587



Hands-On Activity



**Donna deBit
City of Spokane**

ASK
QUESTIONS

**RULES OF
THE ROAD**

PARTICIPATE



**HAVE
FUN!**



BE
RESPECTFUL

BE CREATIVE!



TEAMWORK



THE ELEMENTS OF A COMMUNITY



Places with nothing on them at all.

ENVIRONMENTAL

INDUSTRIAL

Places where things are made/refined, etc.

AGRICULTURAL

Where things are grown or raised.

RESIDENTIAL

Places where people live.

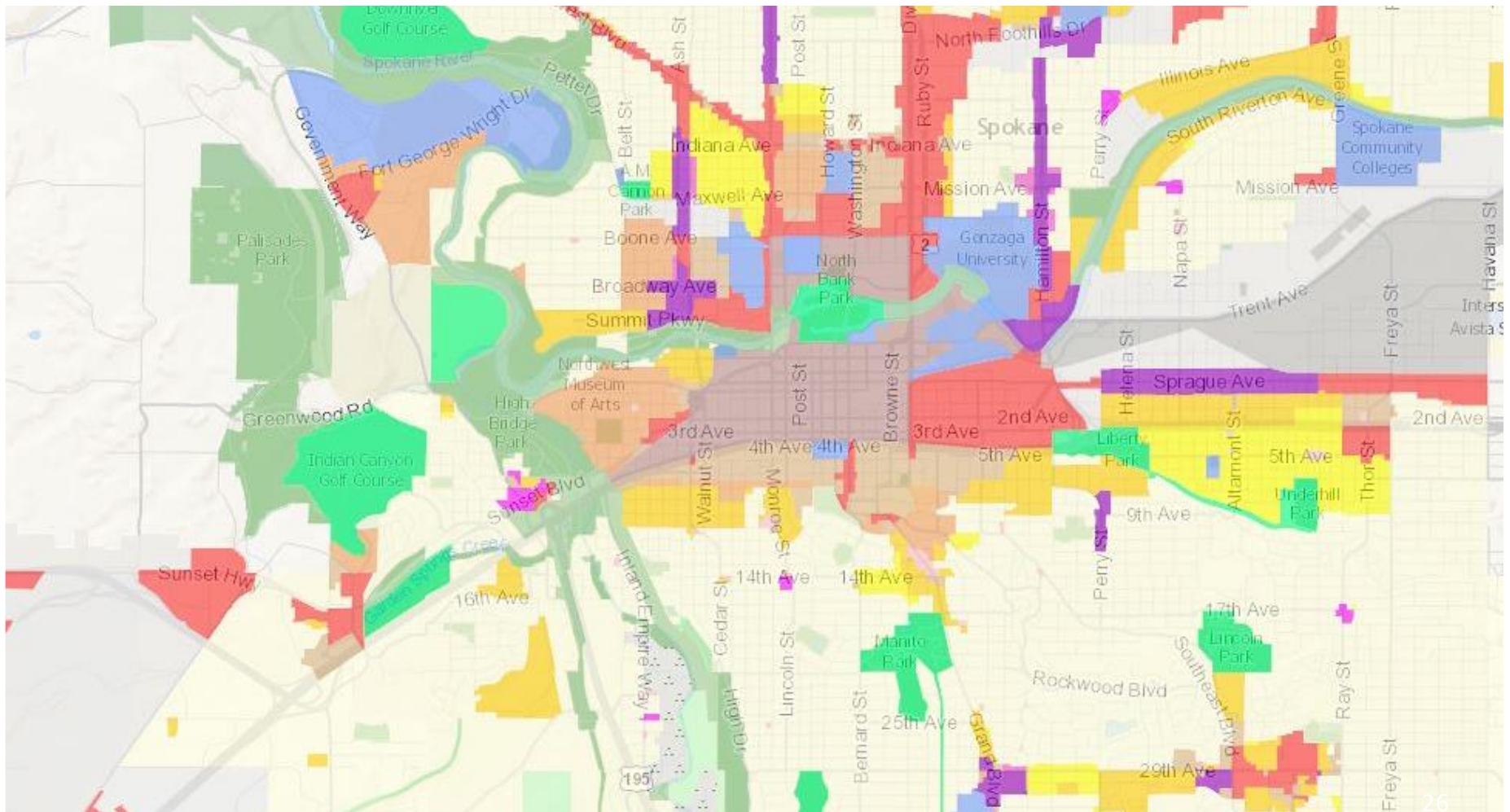
PUBLIC USE

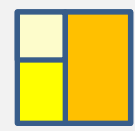
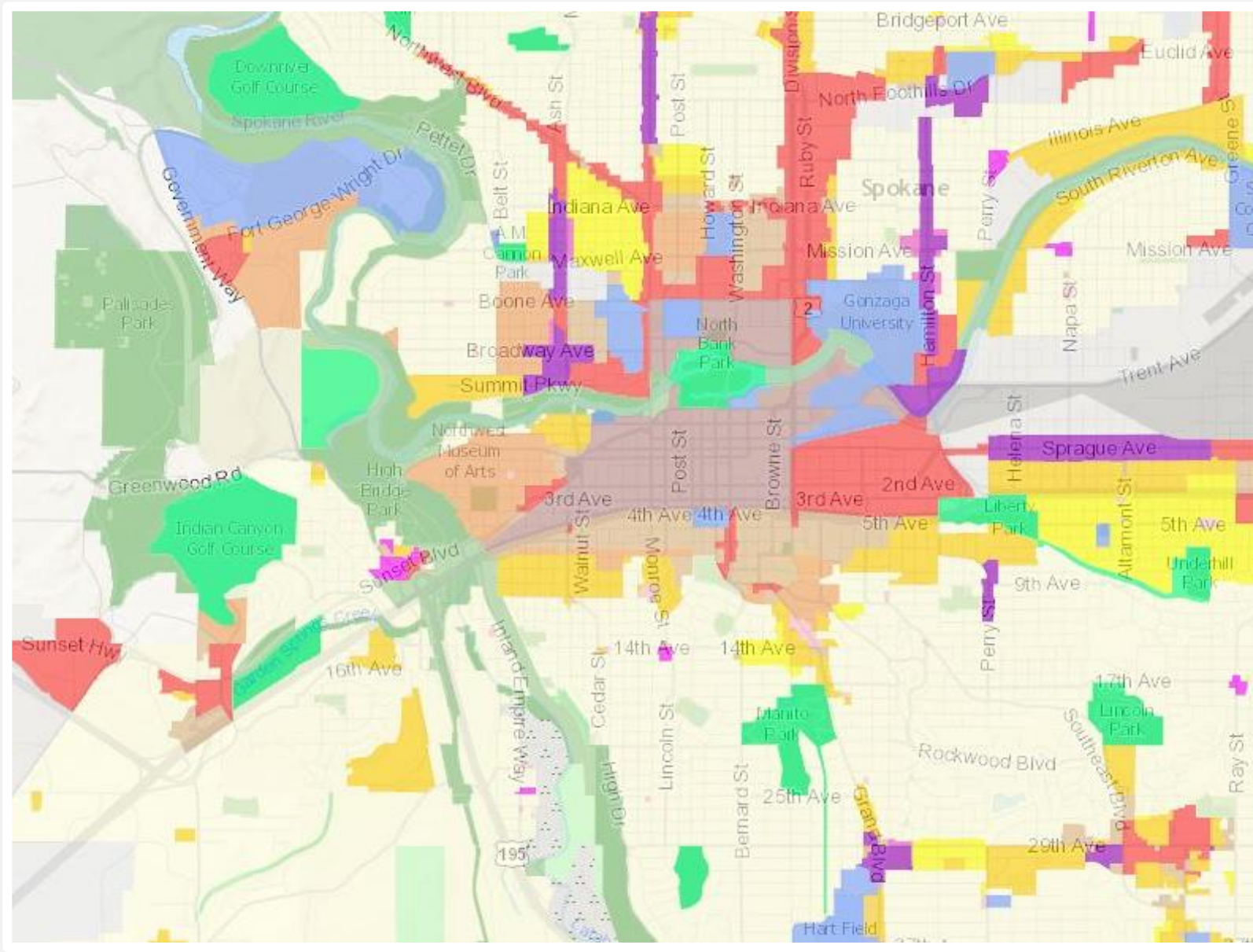
Places where community activities take place or community resources are stored.

COMMERCIAL

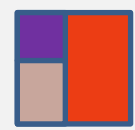
Places where people buy things.

BUILDING THE COMMUNITY





Residential



Commercial



Public



Industrial



Parks/ Open Space

Spokane Land Use Map

BUILDING THE COMMUNITY

- 10-12 minutes
- Use all of the categories.
- Think about why you are putting types of things next to each other.
- Use **at least 3** different icons.



Places with nothing on them at all.

ENVIRONMENTAL

INDUSTRIAL

Places where things are made/refined, etc.

AGRICULTURAL

Where things are grown or raised.

RESIDENTIAL

Places where people live.

PUBLIC USE

Places where community activities take place or community resources are stored.

COMMERCIAL

Places where people buy things.

PRESENT **YOUR COMMUNITY**

- Where would you live?
- Where would your school be?
- How easy would it be to get to from your home or school?
- What would be your favorite thing to do?
- What's unique in your community?
- How would you get around town?
 - *Car, bus, walk, something else?*

POP QUIZ

- 1. How many land use categories are there?**
- 2. What did we do with our land use chart? What about with our maps?**
- 3. What are some things that we thought about while planning our communities?**
 - What kinds of things are good to have close to each other?
 - What are some things that should be kept further apart?
- 4. Would anyone like to be a planner when they grow up?**

Questions




Donna deBit

City of Spokane

Associate Planner

ddebit@spokanecity.org

509-625-6637



Audience Q&A and Sharing





Session Wrap-Up

Connect with us!

- Visit washington-apa.org/youth-in-planning to learn more about the Youth In Planning Task Force
- Sign up to join our monthly Comp Plan Academy meetings: First Wednesdays of the month, 8-9am on Zoom

Stephanie Velasco, Seattle
LetsMakeaPlanWA@gmail.com

Kate Neese, Bellevue
kneese@bellevuewa.gov

Alex Hunt, Burien
alexh@burienwa.gov

Shelley Denison, Sandy
sdenison@ci.sandy.or.us

Evan Hietpas, Edgewood
evan@cityofedgewood.org

Donna deBit, Spokane
ddebit@spokanecity.org