



WASHINGTON, BY AND BY

A COMMUNITY PLANNING
GRAPHIC NOVEL

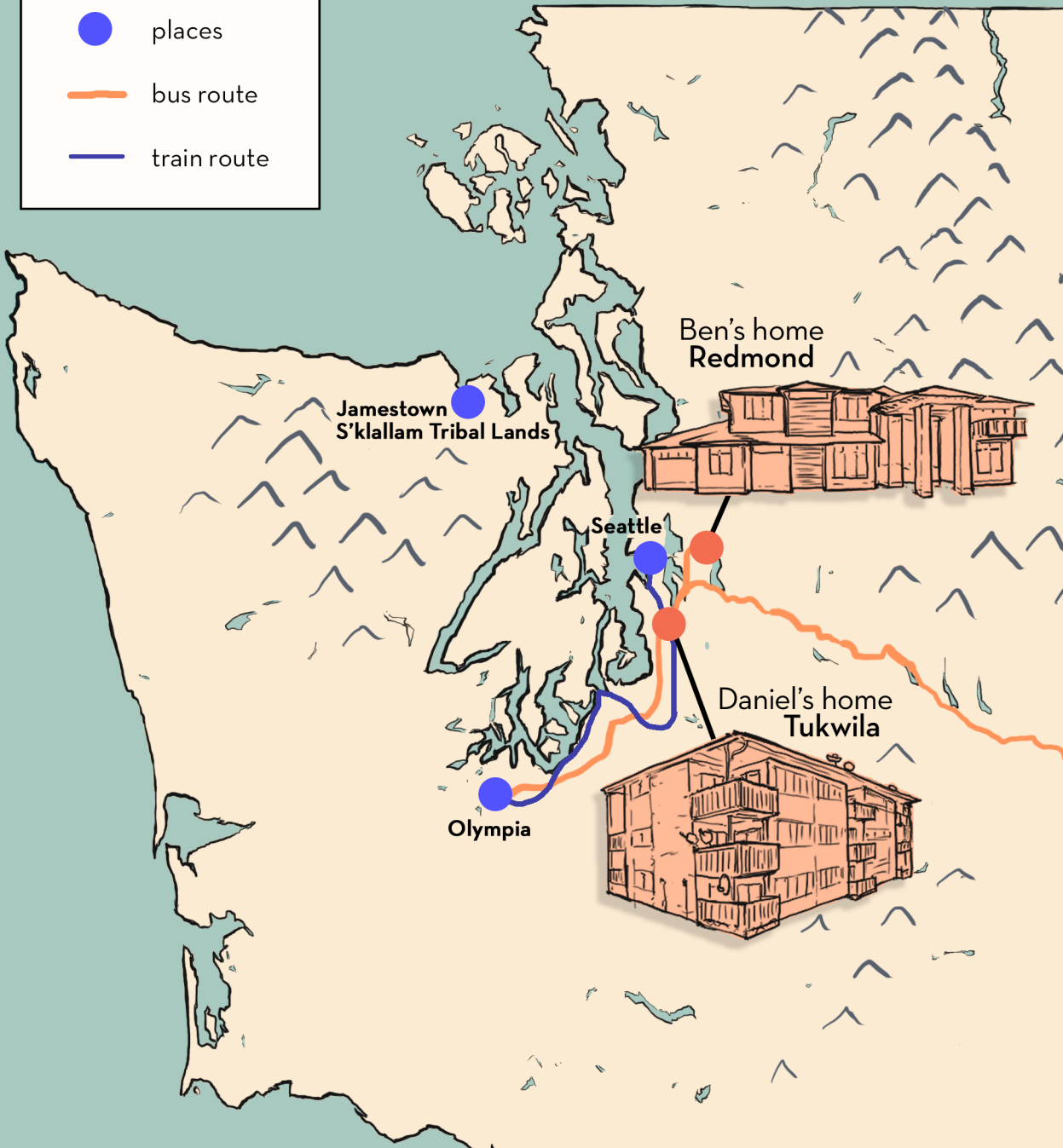
BY
GABRIELLE LYON
KAYCE BAYER
DEVIN MAWDSLEY

homes

places

bus route

train route



WASHINGTON, BY AND BY

By Gabrielle Lyon, Kayce Bayer, Devin Mawdsley
For the Youth in Planning Taskforce - Washington APA

CREDITS

Gabrielle Lyon: Creative Director, Writer, Editor
Kayce Bayer: Writing, Research, Color, Lettering, Design
Devin Mawdsley: Pencil and Ink

© 2019 Lyon, Bayer, Mawdsley
ISBN: 978-0-578-55462-4
Publication date: September 1, 2019

Cricket's home
Chelan



WASHINGTON, BY AND BY

A COMMUNITY PLANNING
GRAPHIC NOVEL

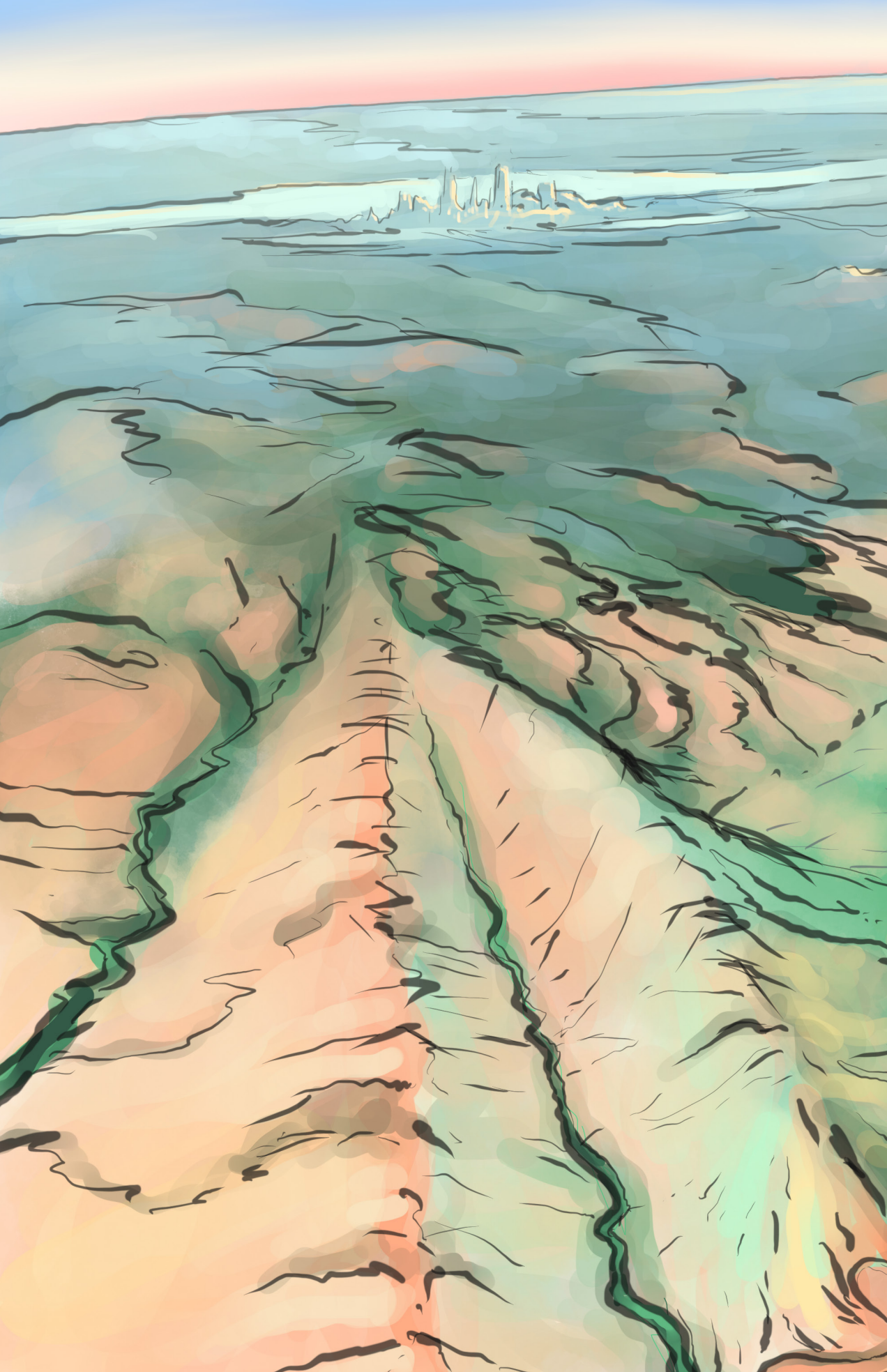
Ellensburg


BY
GABRIELLE LYON
KAYCE BAYER
DEVIN MAWDSLEY

Jenna's home
Yakima



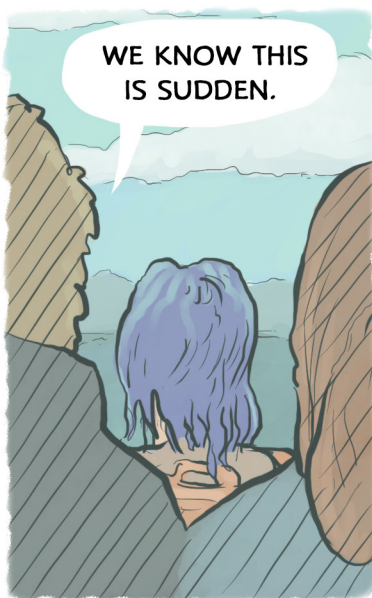
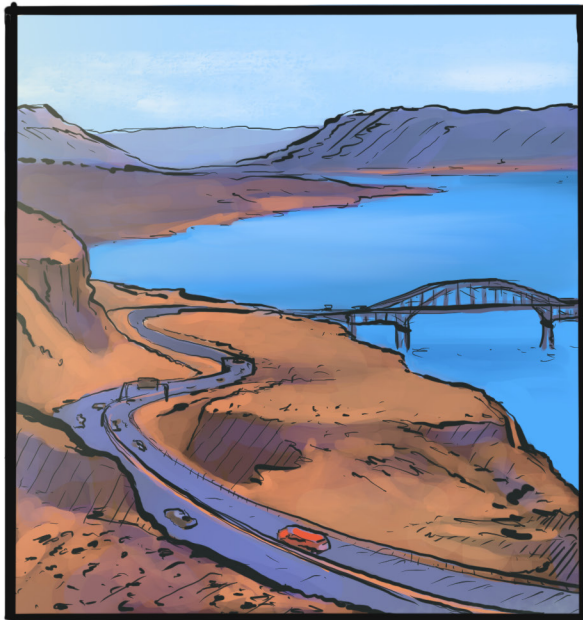
IT IS SUMMER. TEENS FROM AROUND THE STATE ARE HEADING TO OLYMPIA, WASHINGTON, FOR A SUMMER PROGRAM ABOUT COMMUNITY PLANNING AND HOUSING. AS THE PROGRAM UNFOLDS, CRICKET, JENNA, DANIEL AND BEN ARE FORCED TO CONFRONT THE INTERSECTIONS OF POWER, DEVELOPMENT AND DISPLACEMENT IN THEIR LIVES AND IN THE LIVES OF THE PEOPLE AROUND THEM.

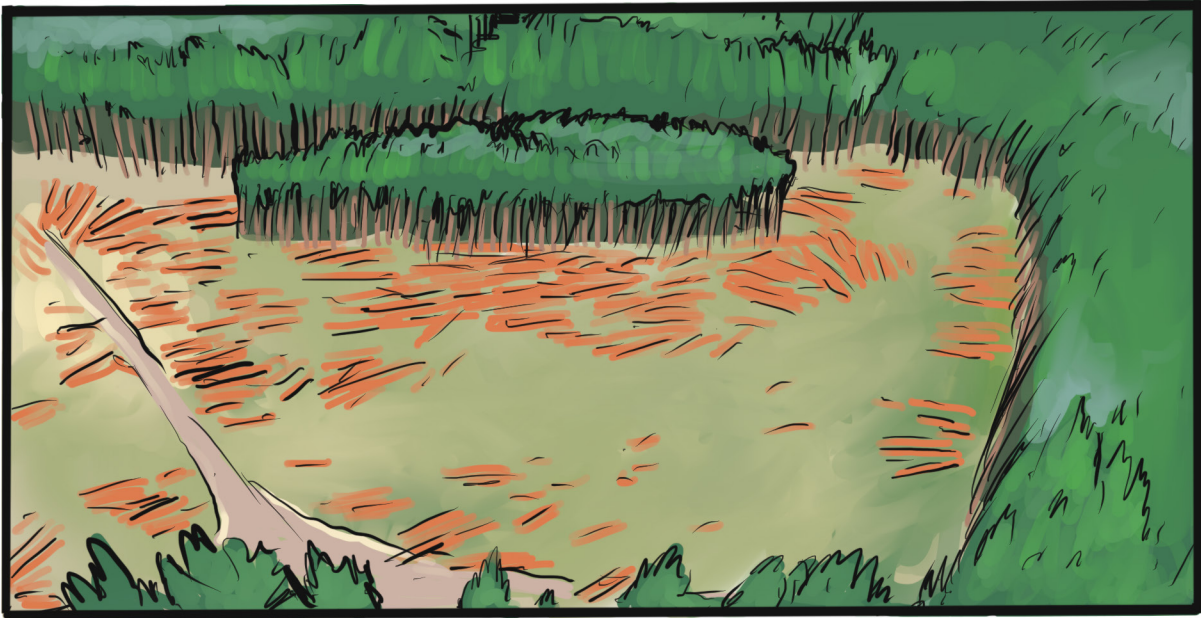
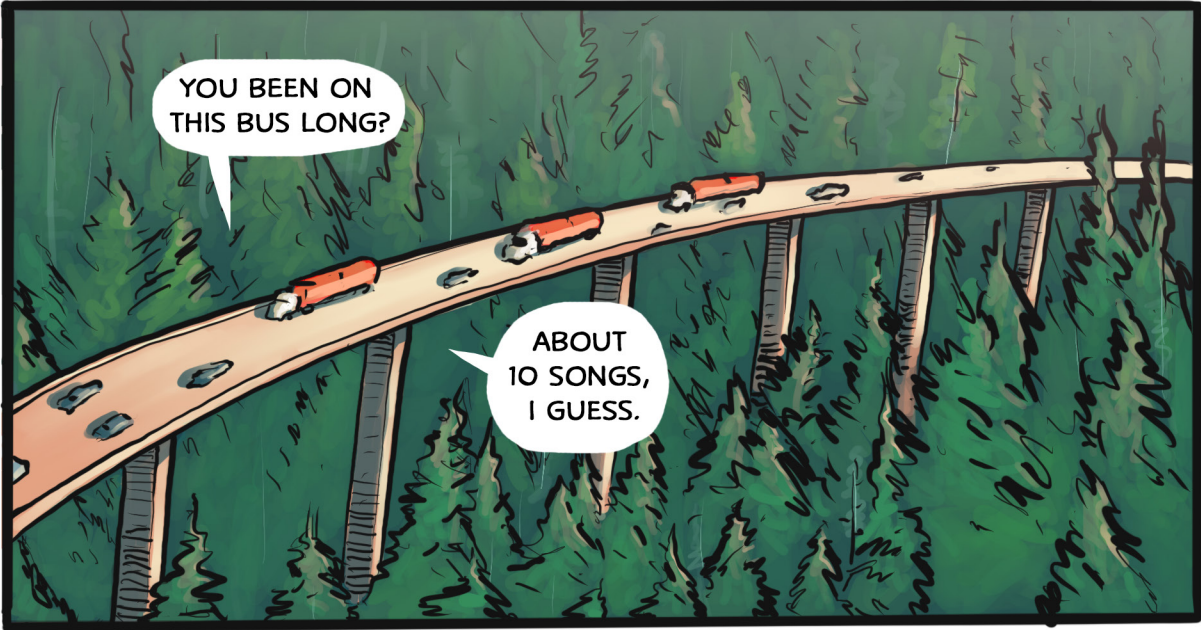




WE HAVE
SOMETHING
TO TELL YOU.

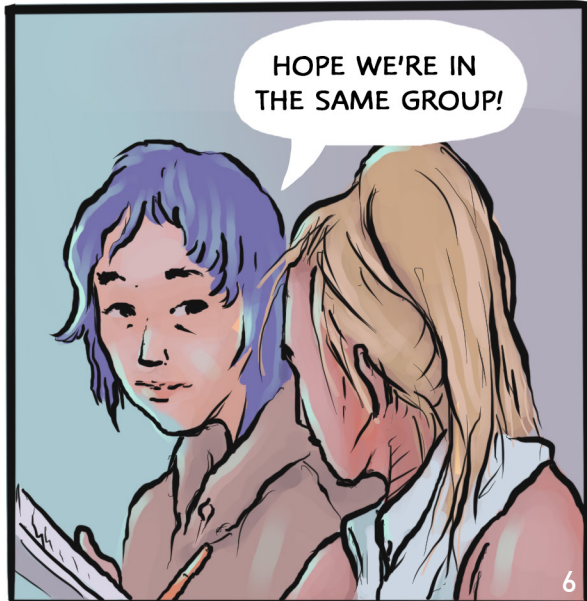
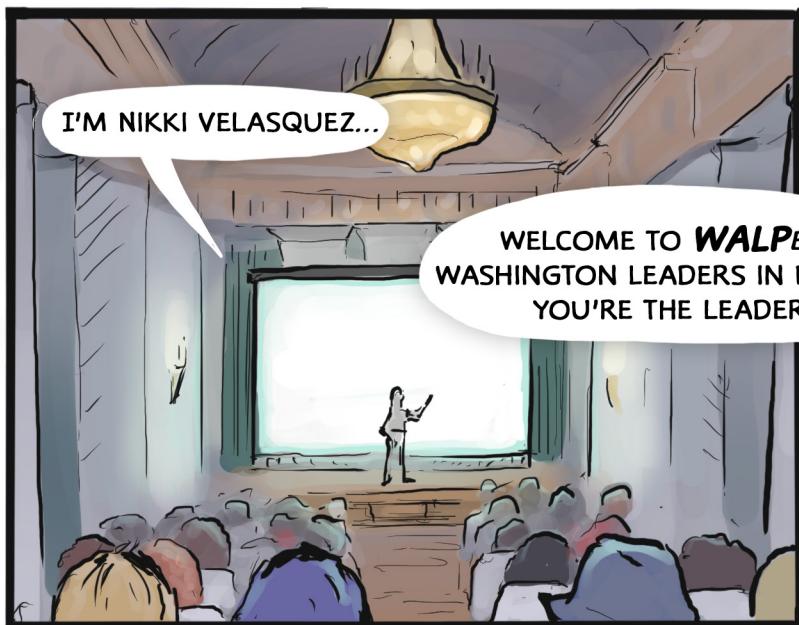
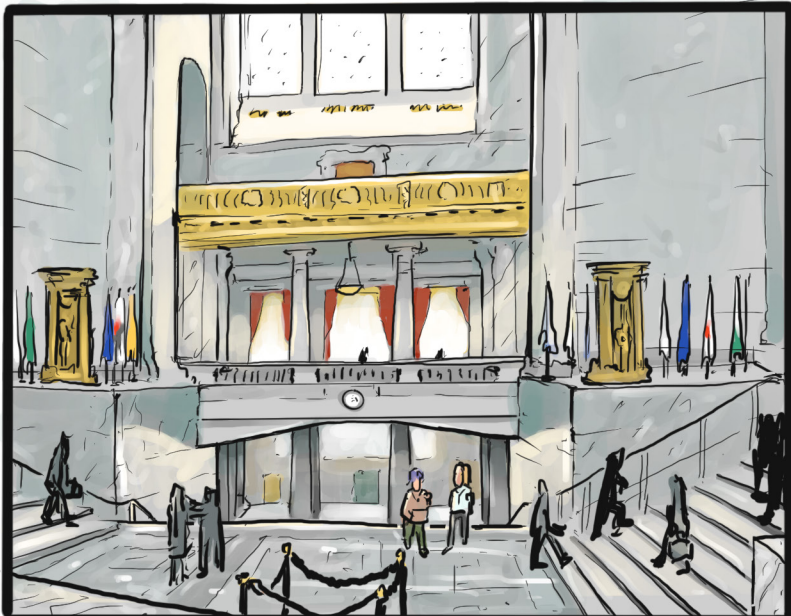
SOMEONE OFFERED
TO BUY OUR LAND.

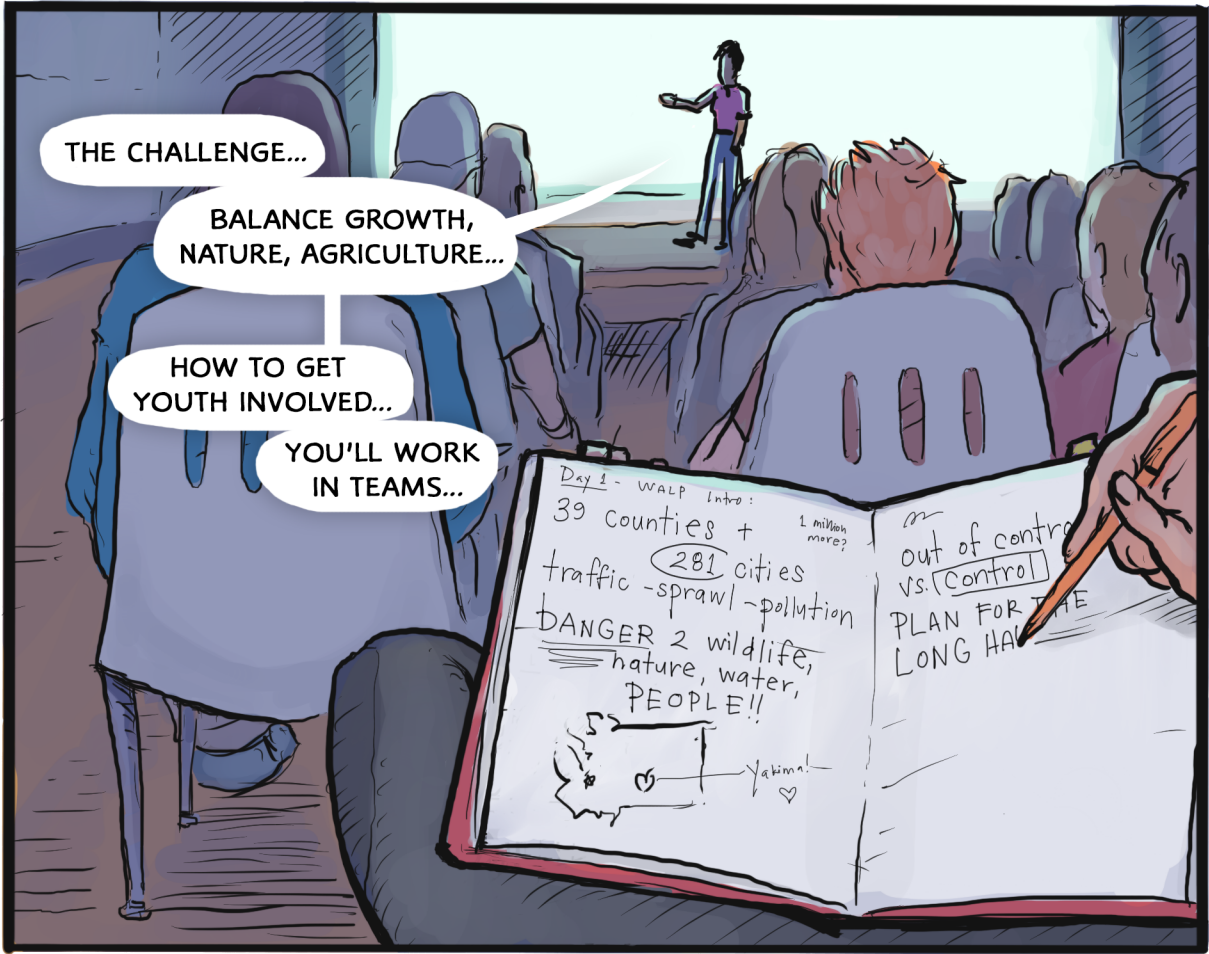
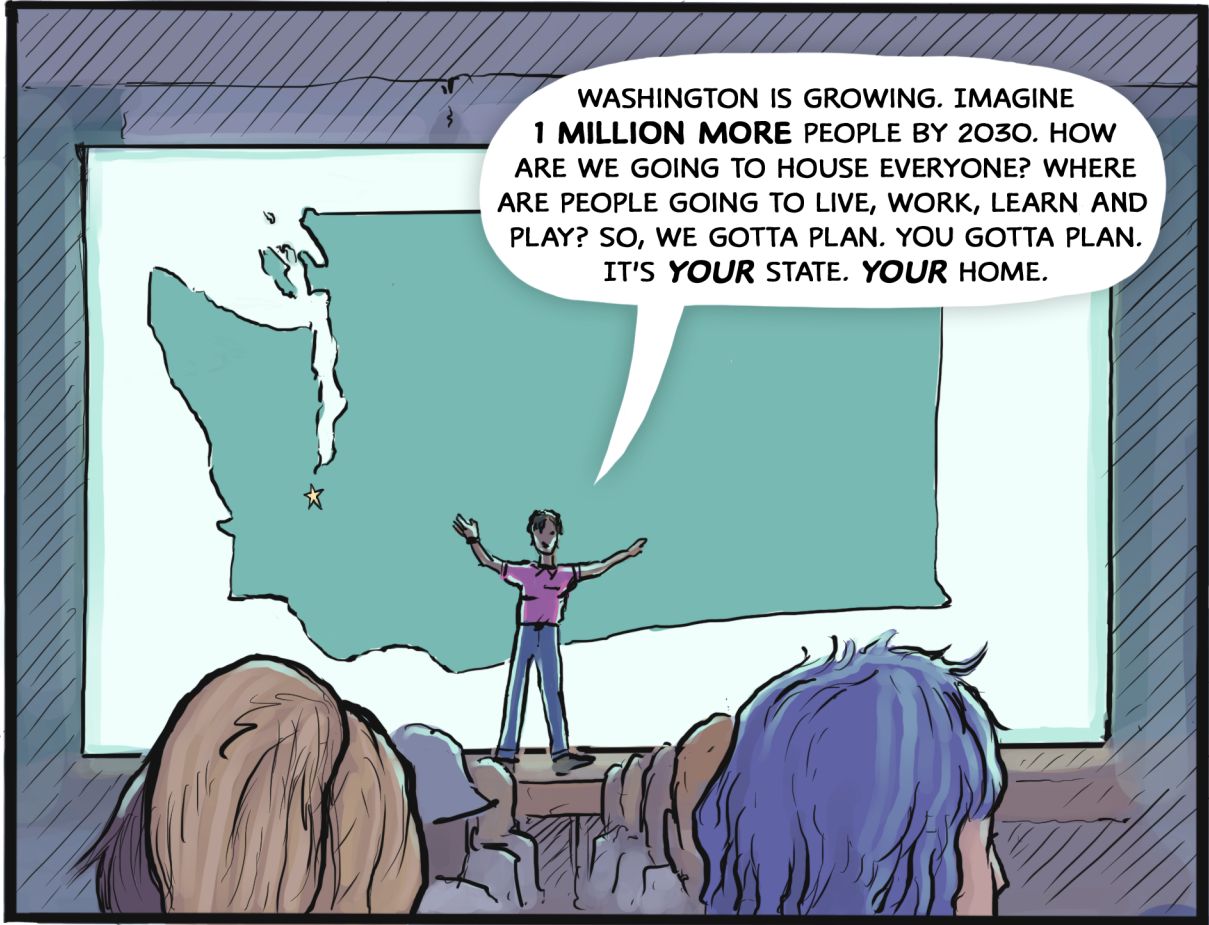





OLYMPIA, WA









WOW, THAT
TEAMBUILDER.
AWK-WARD!

I KIND OF
LIKED IT.

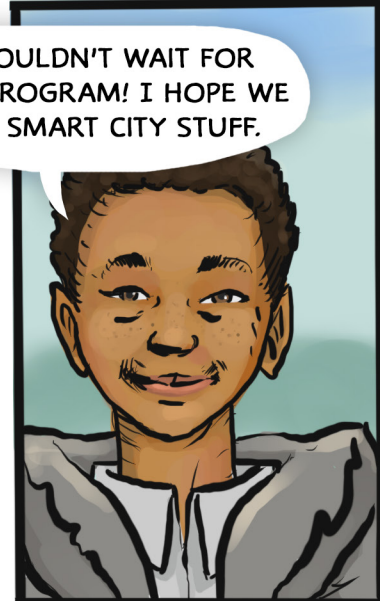
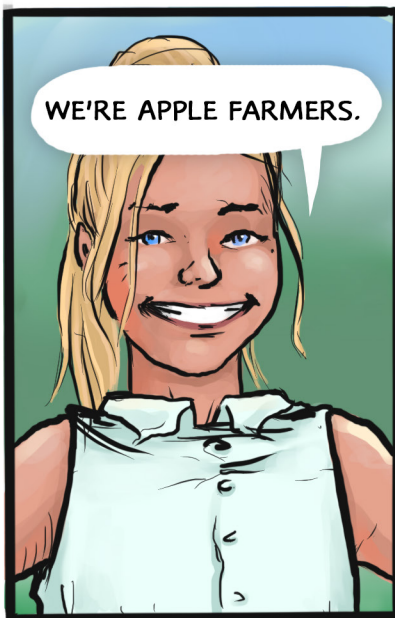
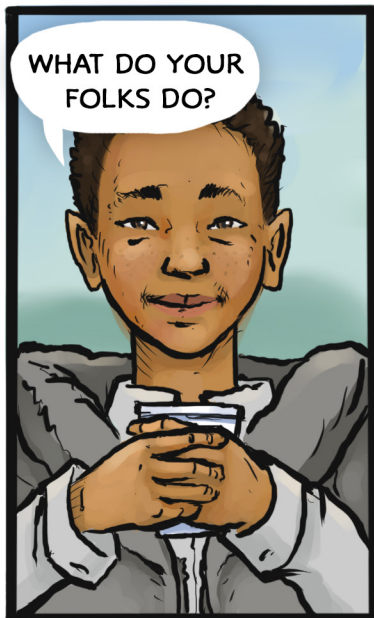
I'M BEN.

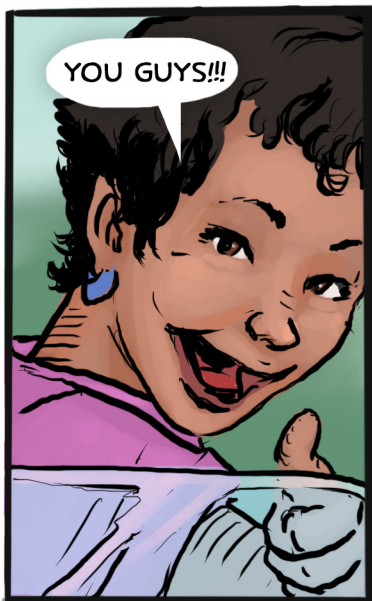
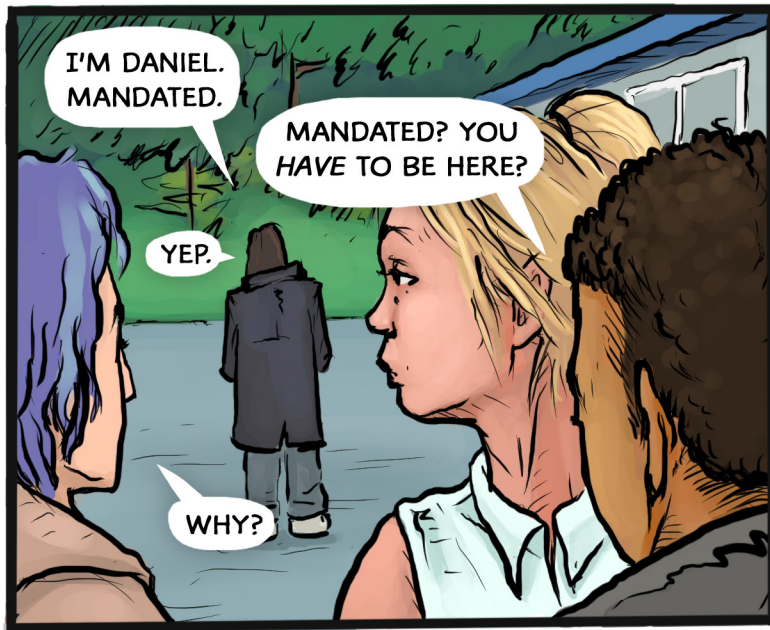


YOU GUYS KNOW
EACH OTHER?

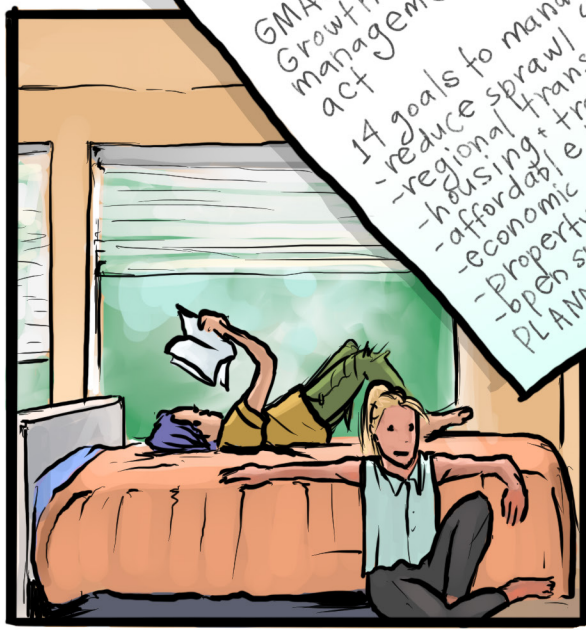


WE MET
ON THE BUS.

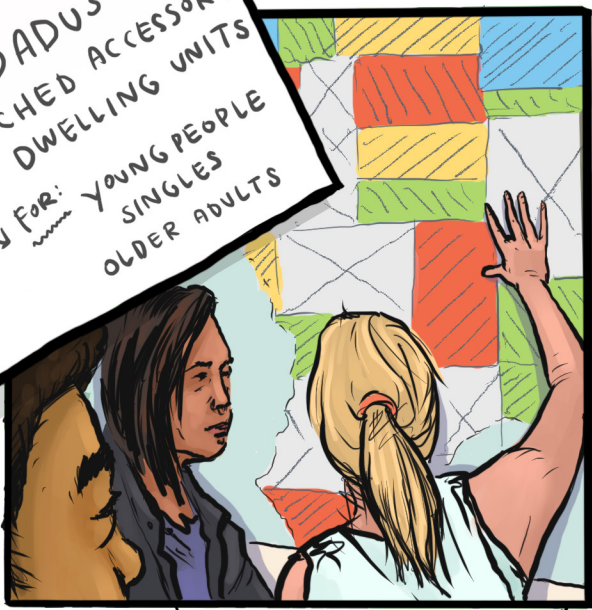
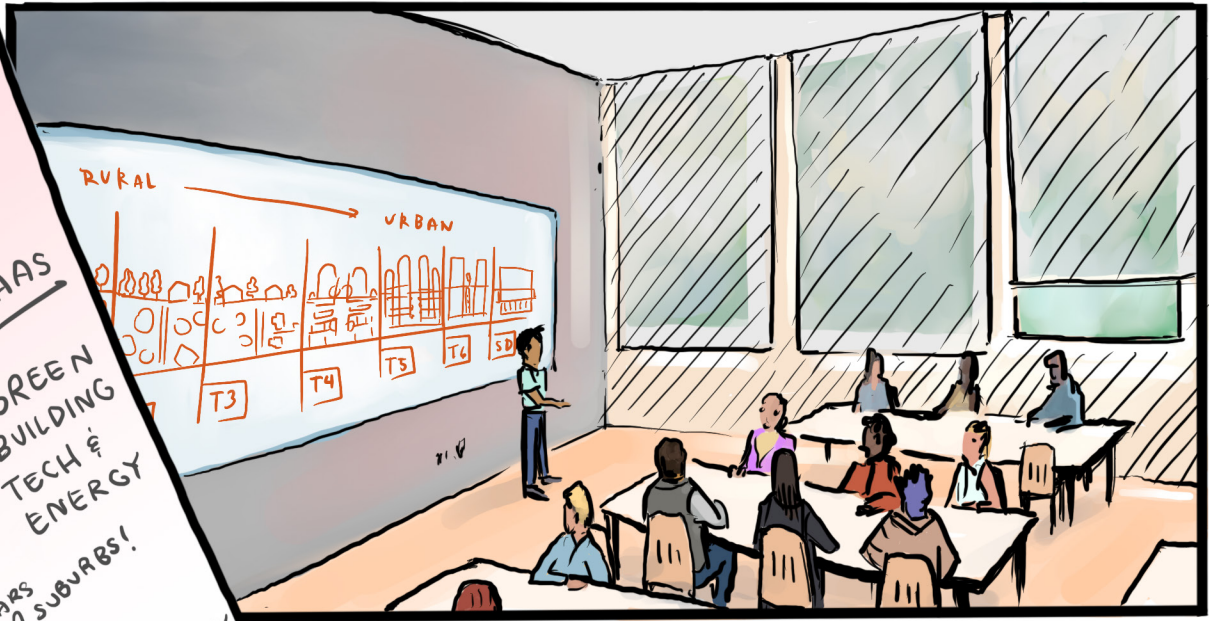




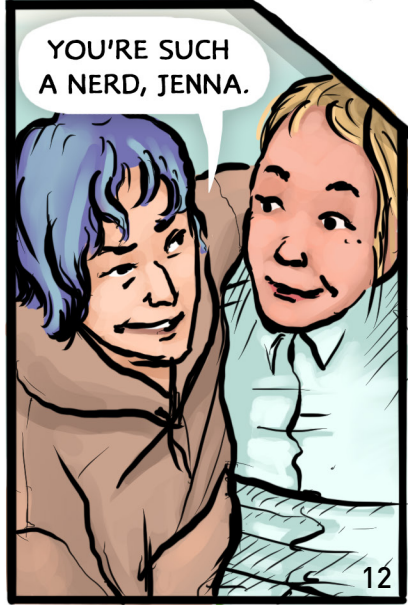
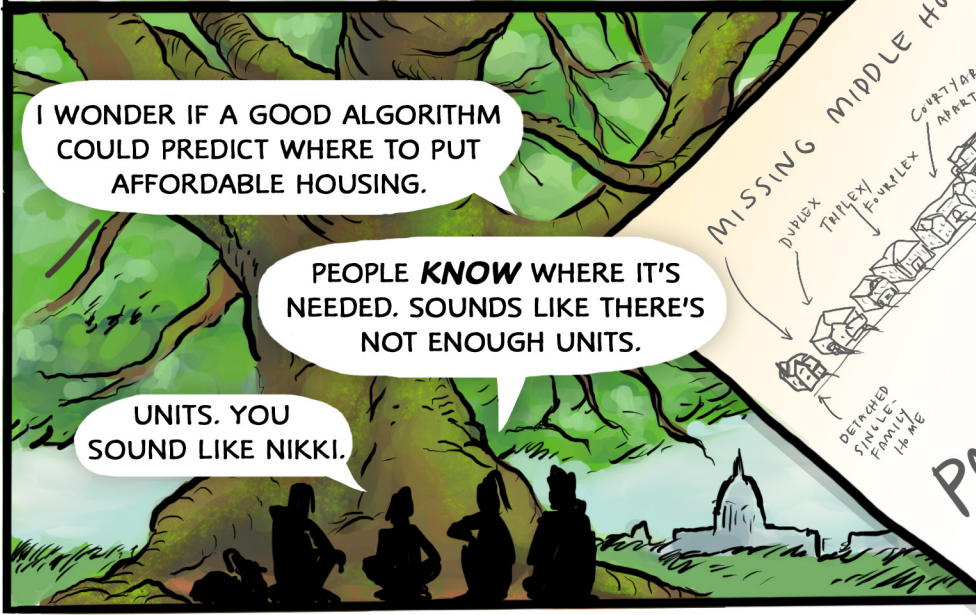
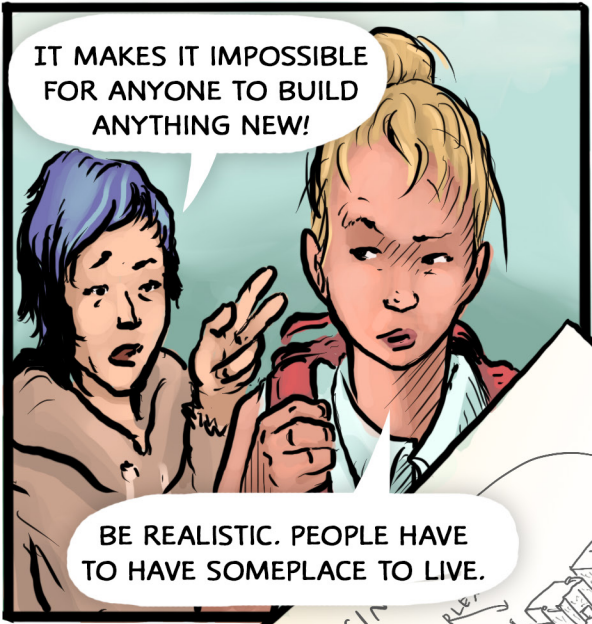
GMA = Growth Management Act
 14 goals to managing
 - reduce sprawl
 - regional transport
 - housing + transportation = regional development
 - affordable housing
 - economic development
 - property rights
 - open space
 PLANNED at COMMUNITY LEVEL



TAAS
 GREEN BUILDING TECH & ENERGY
 CARS & SUBURBS!
 DADUS = DETACHED ACCESSORY DWELLING UNITS
 (FOR: YOUNG PEOPLE SINGLES OLDER ADULTS)



Housing is a 






MOM. PLEASE. WHY DO WE HAVE TO SELL?

BUT WHAT ABOUT ME? DOESN'T MY OPINION COUNT?

WHAT'S THAT MEAN?



WE'VE BEEN WAITING FOR THIS CHANCE.

IF WE SELL NOW, WE'LL BE ABLE TO AFFORD A PLACE IN TOWN.

IT'S A GOOD INVESTMENT. WE'RE DOING IT FOR YOU.




I HATE TOWN.

WAIT!


CAN YOU SEND PHOTOS OF OUR PLACE - AND THE CREEK? IT'S FOR AN ASSIGNMENT. WHO KNOWS IF I'LL EVER SEE THEM AGAIN.



I HAVE TO GO.



YOU'LL SEE THEM AGAIN. WE WON'T MOVE UNTIL SEPTEMBER.

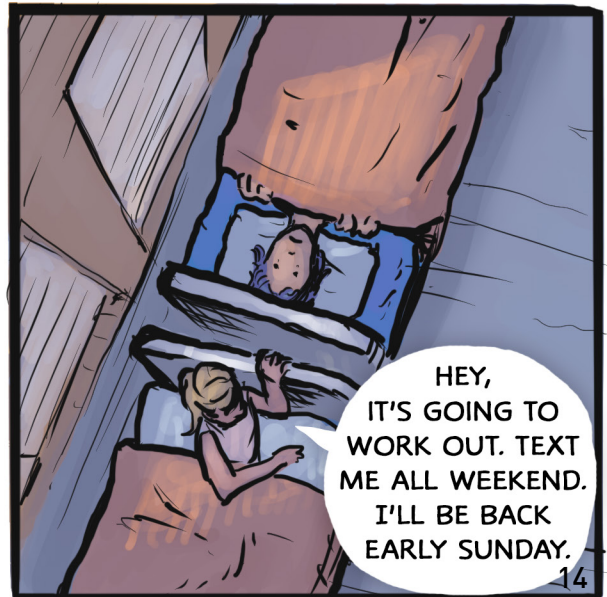
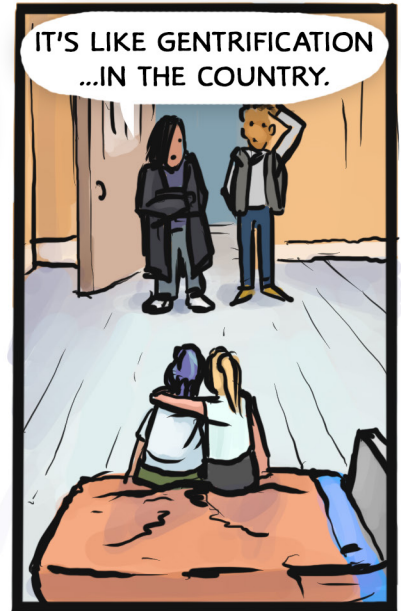


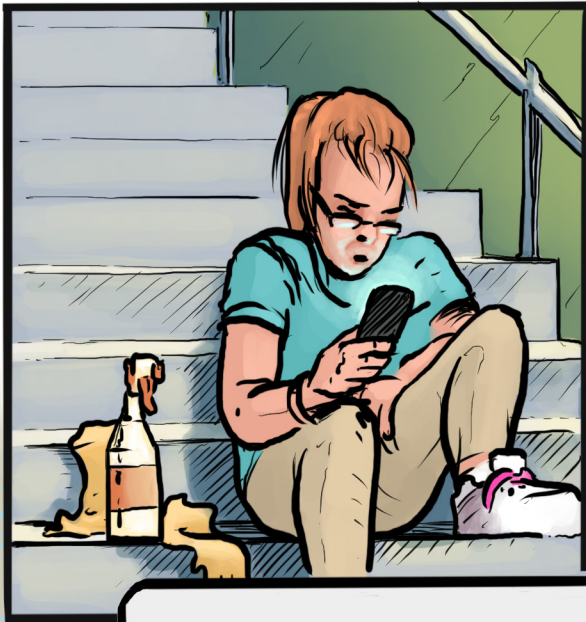
I CAN'T BELIEVE YOU GUYS! YOU'RE RUINING MY LIFE.



I'M SORRY YOU'RE ANGRY.

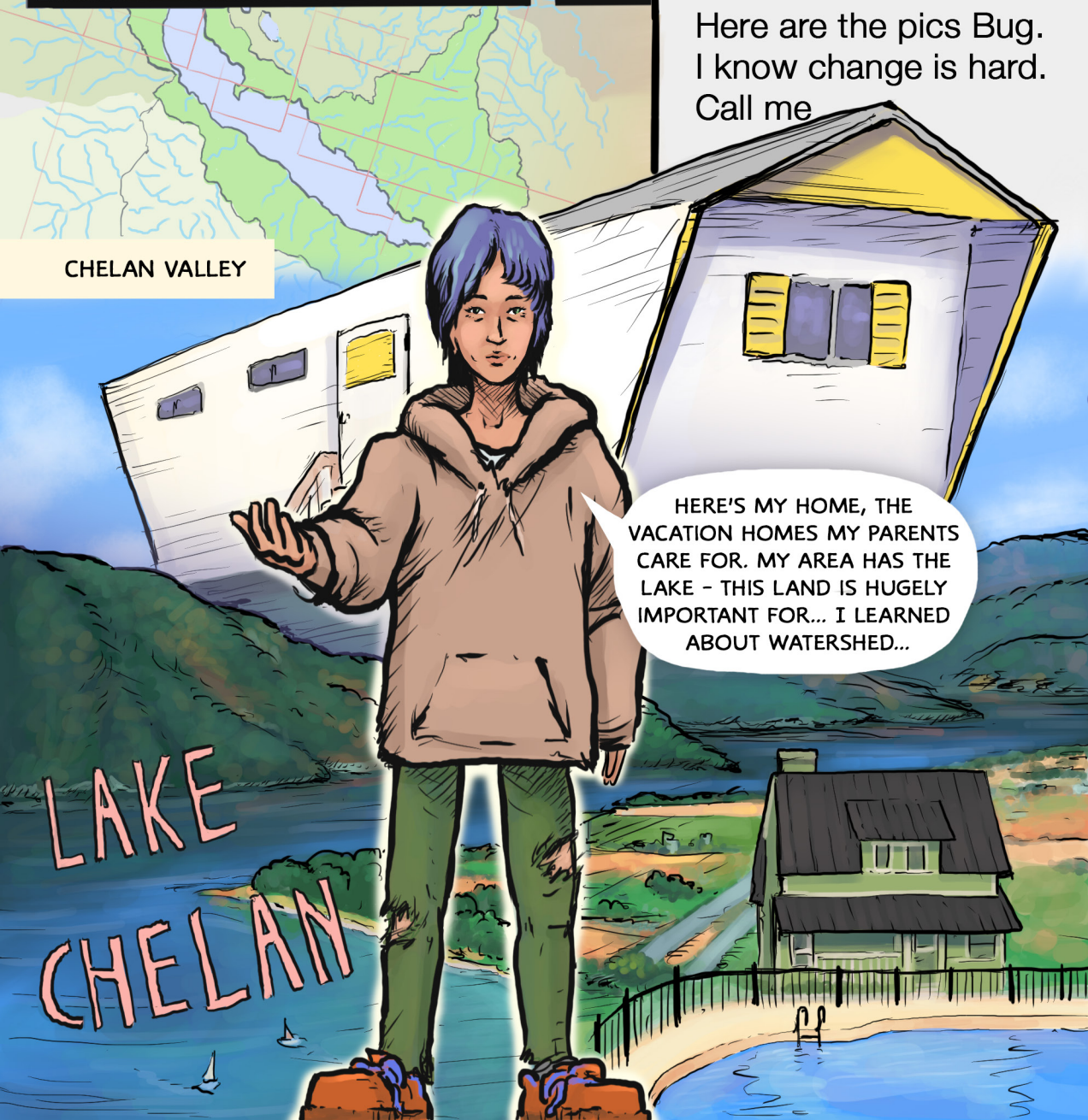
~CLICK

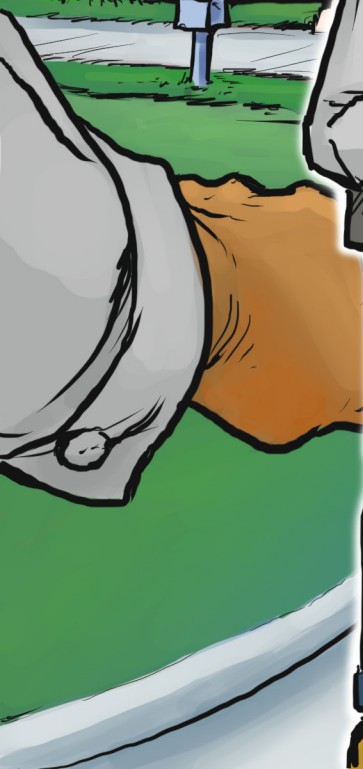
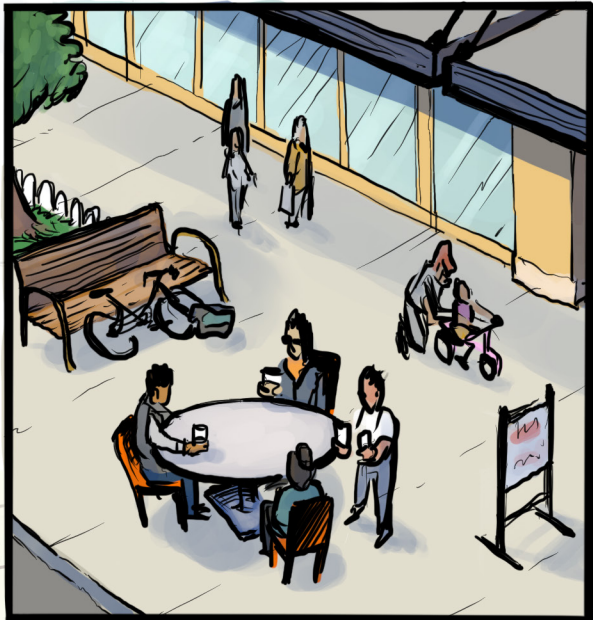
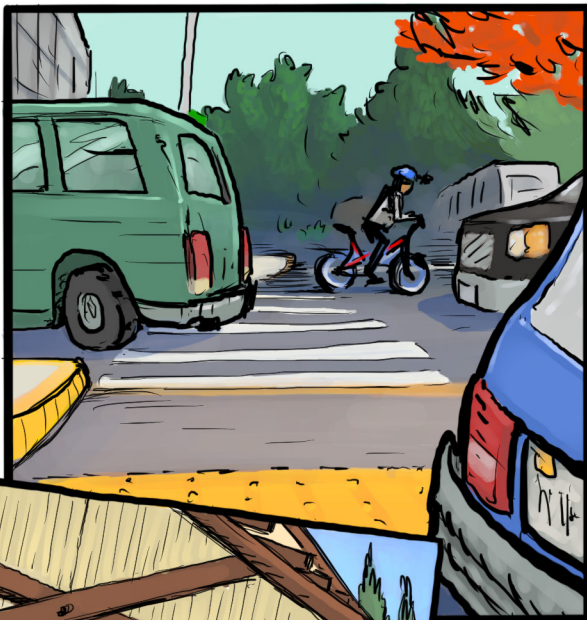




Here are the pics Bug.
I know change is hard.
Call me

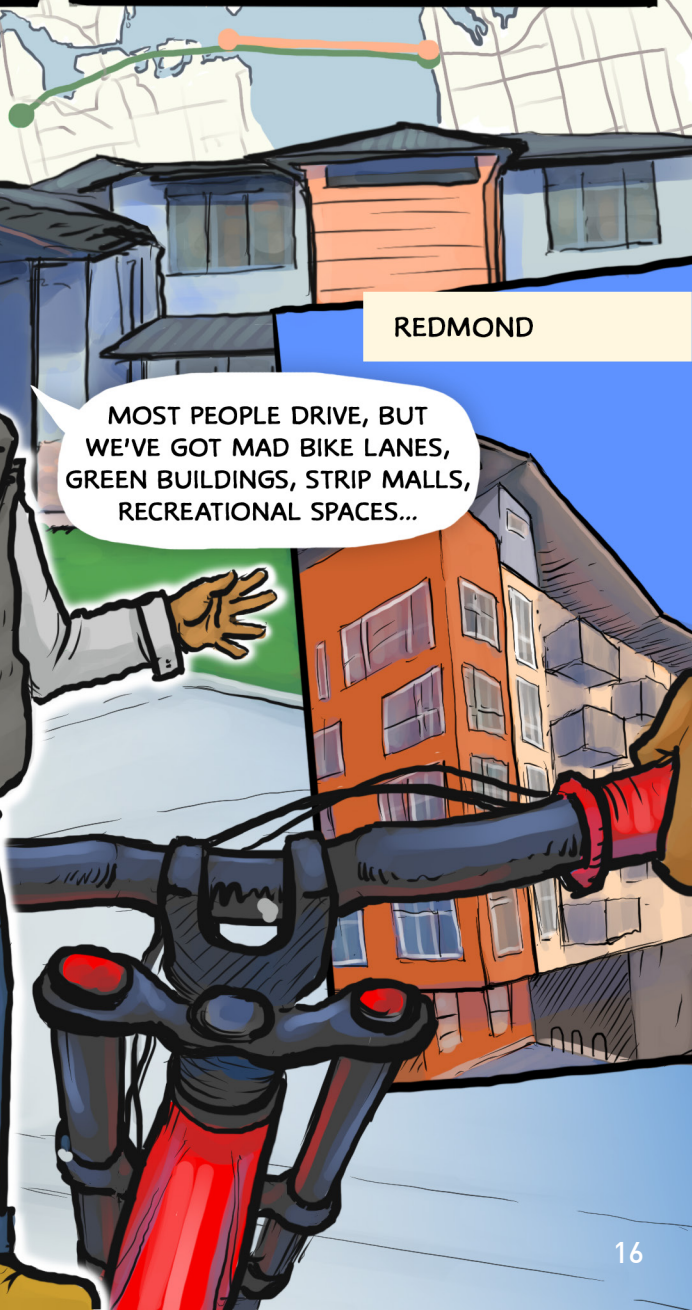
CHELAN VALLEY





MOST PEOPLE DRIVE, BUT
WE'VE GOT MAD BIKE LANES,
GREEN BUILDINGS, STRIP MALLS,
RECREATIONAL SPACES...

REDMOND





PLANNING DOES MATTER.
IT ALWAYS HAS.

TUKWILA



WE HAD LEISURE TIME
BECAUSE WE KNEW HOW
TO LIVE WITH WHAT THE
LAND PROVIDED.

QUINALT COAST



MY 3 POINTS ON
COMMUNITY PLANNING:
1. PLAN FOR 7 GENERATIONS
2. CONFRONT CLIMATE CRISIS
3. LIVE WITH NATURE

Earth Island Journal - Spring 2017

Losing Home

As rising waters eat away the land beneath their feet, many Native communities are turning into climate refugees.

ZOE LOFTUS-FARREN

Fawn Sharp grew up in Taholah village, a small reservation nestled between the mouth of the Quinalt River and the Pacific Ocean. She spent her summers surrounded by water, splashing in Lake Quinalt on the eastern edge of the reservation, and hiking along the shoreline, scouring the rocks for starfish and other treasures. In the mornings, she was often up before dawn, fishing with her grandparents on the river.

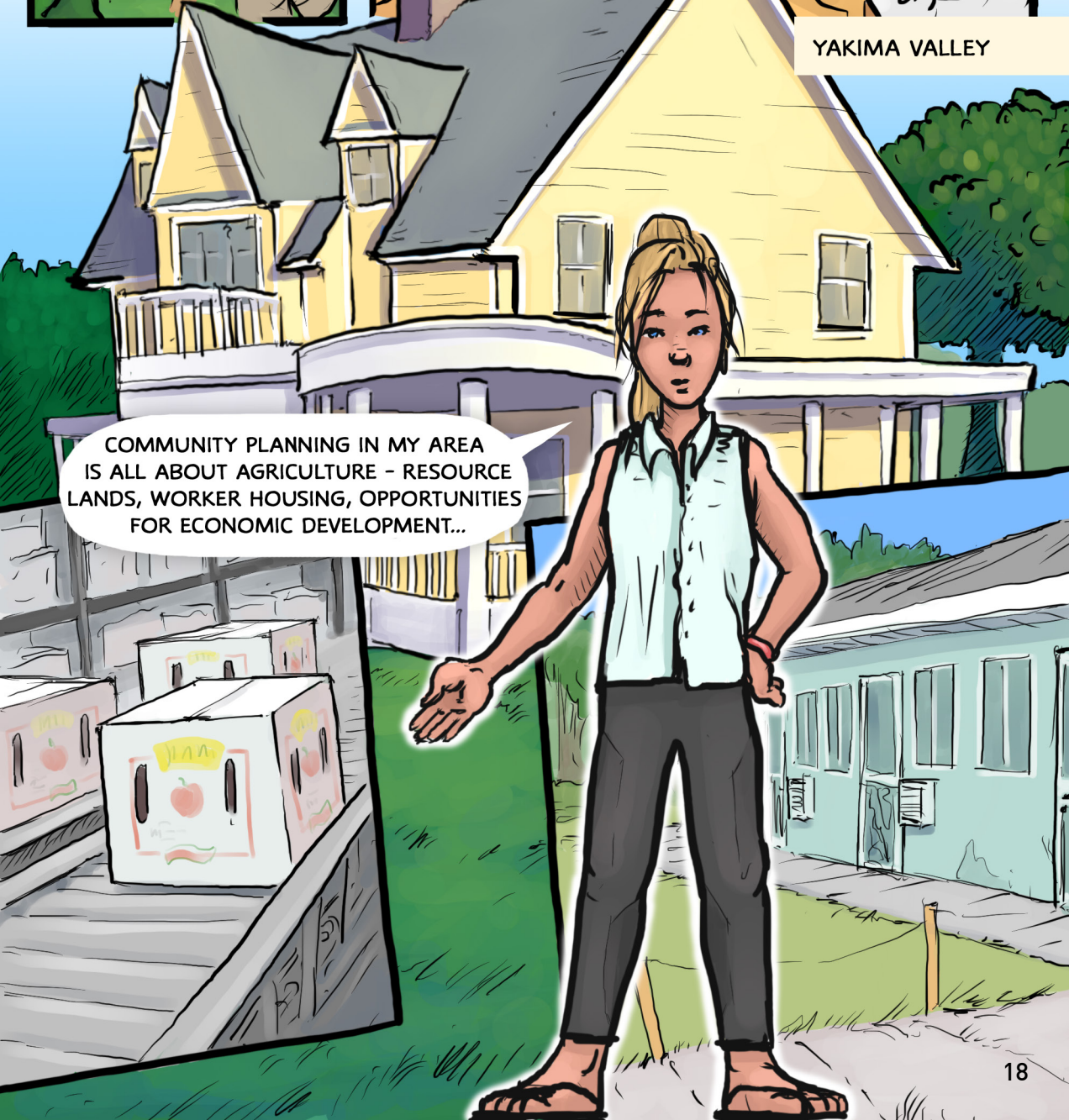
When she left home for college, Sharp is back on the reservation, living near the lake, some 35 miles from Taholah. Now she goes by President John F. Kennedy Indian Reservation, the Quinalt Indian Nation and the Northwest Indians.

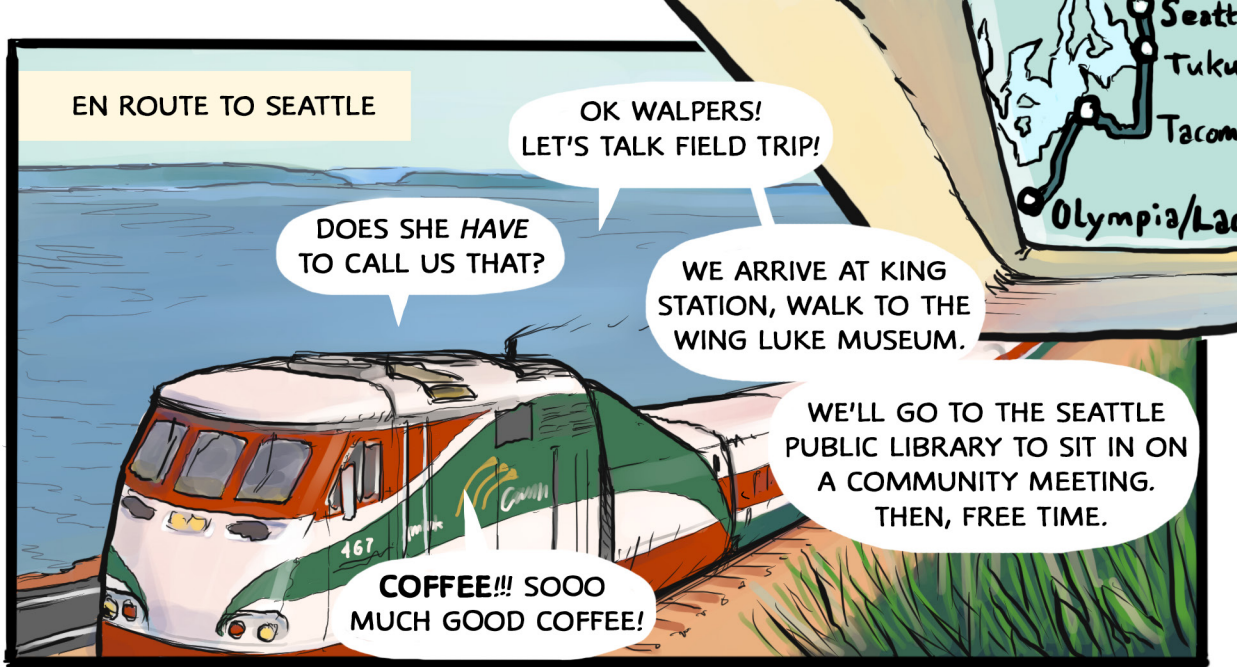
Sharp has faced the same tough issues that many Native communities face, during her childhood, during her college years, and now. She's facing the same decline. She's facing the same decline.



YAKIMA VALLEY

COMMUNITY PLANNING IN MY AREA
IS ALL ABOUT AGRICULTURE - RESOURCE
LANDS, WORKER HOUSING, OPPORTUNITIES
FOR ECONOMIC DEVELOPMENT...





EN ROUTE TO SEATTLE

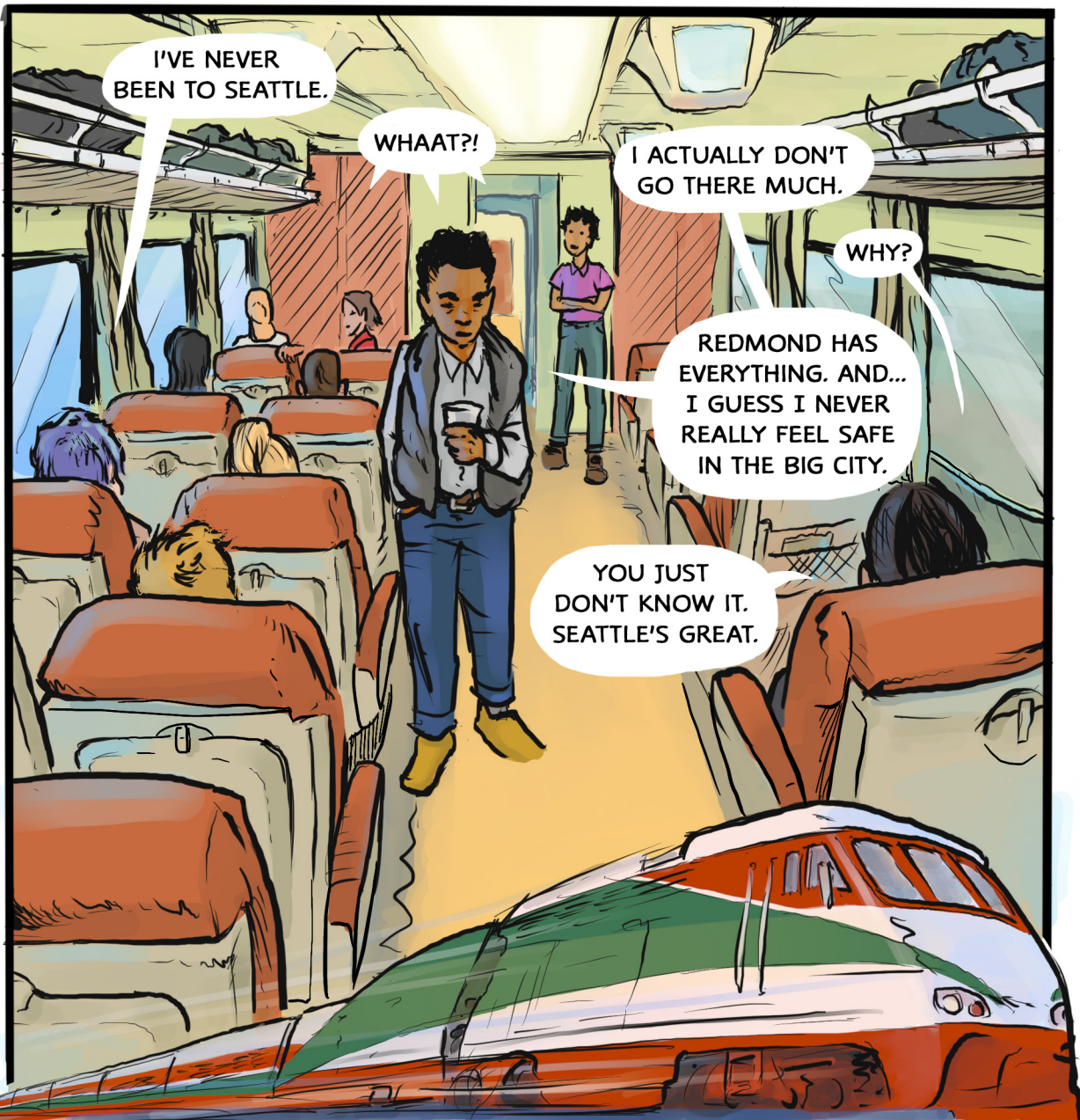
OK WALPERS!
LET'S TALK FIELD TRIP!

DOES SHE HAVE
TO CALL US THAT?

WE ARRIVE AT KING
STATION, WALK TO THE
WING LUKE MUSEUM.

WE'LL GO TO THE SEATTLE
PUBLIC LIBRARY TO SIT IN ON
A COMMUNITY MEETING.
THEN, FREE TIME.

COFFEE!!! SOOO
MUCH GOOD COFFEE!



I'VE NEVER
BEEN TO SEATTLE.

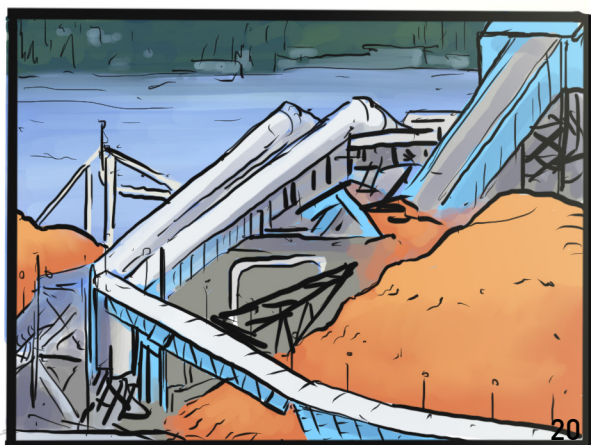
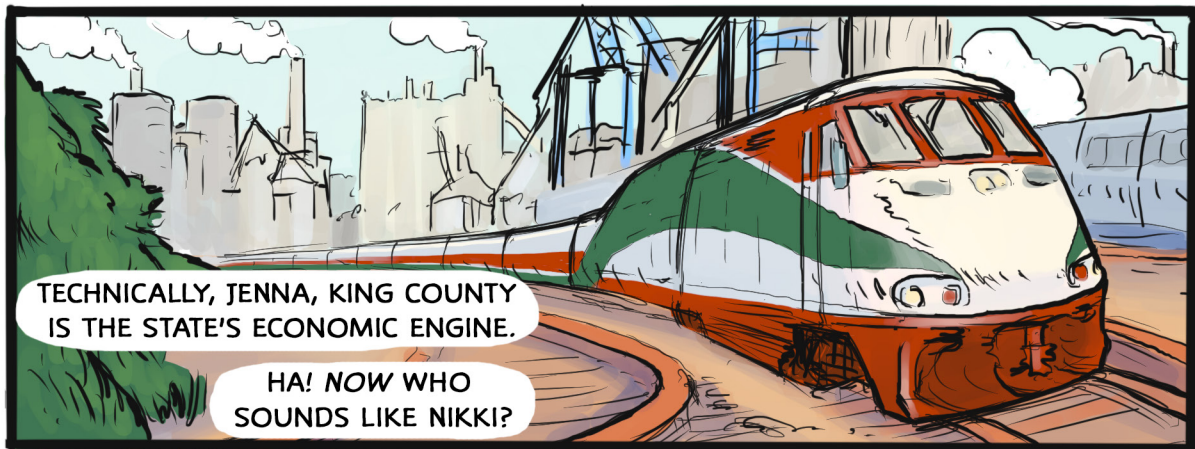
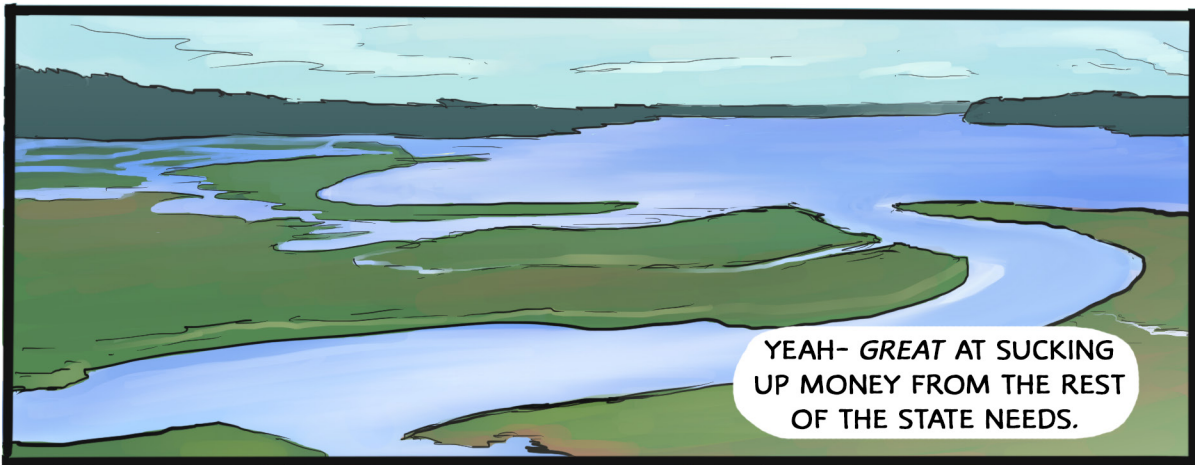
WHAAT?!

I ACTUALLY DON'T
GO THERE MUCH.

WHY?

REDMOND HAS
EVERYTHING. AND...
I GUESS I NEVER
REALLY FEEL SAFE
IN THE BIG CITY.

YOU JUST
DON'T KNOW IT.
SEATTLE'S GREAT.





KING STREET STATION



WHY DO THEY CALL IT
INTERNATIONAL DISTRICT?
IT SEEMS LIKE CHINATOWN.



WING LUKE MUSEUM



THEY PASSED A WHOLE LAW
TO KEEP NATIVE AMERICANS OUT!
NO WONDER IT WAS A BIG DEAL
WHEN ME AND MY MOM LIVED
IN SEATTLE. I HAD NO IDEA.



LOOK AT THIS MAP.
THE PEOPLE BEING
PUSHED OUT NOW...

- ARE THE SAME PEOPLE
WHO WERE DISCRIMINATED
AGAINST BY REDLINING!



THESE ROOMS
ARE REALLY SMALL.
HOW COULD PEOPLE
LIVE SO CRAMPED?



DON'T YOU HAVE
WORKERS? EVER BEEN
TO THEIR HOUSES?

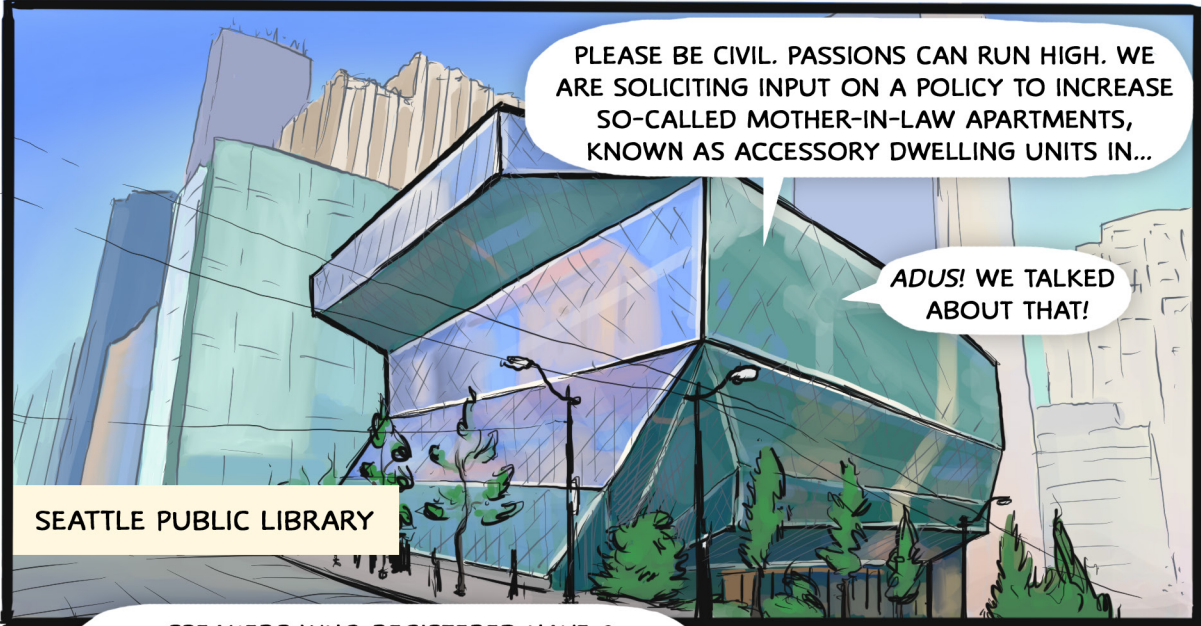


YEAH. BUT THEY'RE
BETTER THAN THIS.

I THINK.



Tools of
segregation
citizenship
discrimination
ability to
make
illegal
to
w
in
(AKA no Africa
no Asians) ← boo!



PLEASE BE CIVIL. PASSIONS CAN RUN HIGH. WE ARE SOLICITING INPUT ON A POLICY TO INCREASE SO-CALLED MOTHER-IN-LAW APARTMENTS, KNOWN AS ACCESSORY DWELLING UNITS IN...

ADUS! WE TALKED ABOUT THAT!

SEATTLE PUBLIC LIBRARY

SPEAKERS WHO REGISTERED HAVE 2 MINUTES. IF YOU DID NOT REGISTER WRITE YOUR QUESTIONS AND WE'LL TRY TO GET TO IT.



THAT DOESN'T SEEM FAIR.

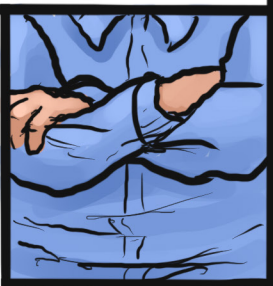
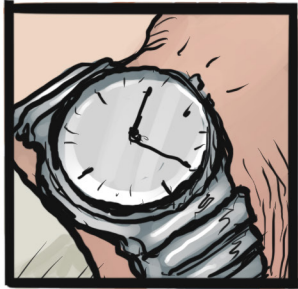


YOU WILL NOT SANITIZE OUR QUESTIONS!




WE'RE TAKING QUESTIONS.

I NEED MORE THAN 2 MINUTES!



WHY DON'T PEOPLE JUST TEXT THE QUESTIONS AND EVERYONE COULD SEE THEM?

WHY CAN'T **EVERYONE** HAVE A CHANCE TO SPEAK?



NOW INSTEAD OF ONE FAMILY LIVING
NEXT DOOR THERE COULD BE THREE?!
FOR WHAT? AN IMAGINED,
NOT-YET-HERE POPULATION.

PEOPLE ARE BIASED AGAINST RENTERS. WHAT
ABOUT PEOPLE LIKE ME AND MY GIRLFRIEND?
WE'RE JUST TRYING TO GET A START.

THE PEOPLE AGAINST
THIS ARE PRIMARILY WHITE,
SENIORS AND HOMEOWNERS.

NO ONE IS
LISTENING TO
EACH OTHER.

ADUS HELP ENSURE
WE CAN HAVE MORE
HOUSING FOR...



WHERE ARE PEOPLE
SUPPOSED TO PARK?

OUR STUDIES SHOW THAT
CAR OWNERSHIP DECREASES
AS HOUSE SIZE GETS SMALLER.

THIS IS GOING TO
CAUSE LAND SPECULATION,
RAISE PROPERTY TAXES!

SPECULATORS ARE
TEARING DOWN SINGLE
FAMILY HOUSES....

YOU'RE
RECOGNIZED.

MIMI AND I WILL SPEAK
ON BEHALF OF OUR GROUP.

I STAND HERE TODAY TO ACKNOWLEDGE THE STEWARDS OF COAST SALISH LAND, THE ORIGINAL AND CURRENT CARETAKERS; DUWAMISH, SUQUAMISH, TULALIP AND MUCKLESHOOT.

WE RECOGNIZE *THIS* LIBRARY IS ON INDIGENOUS LAND.

WE ARE THE **FUTURE** HEADS OF HOUSEHOLDS. WE EARN AND SPEND MONEY HERE. WE WANT A LONG TERM PLAN.

WE WANT DIVERSITY, PLACES TO GATHER, HOUSING FOR **ALL** OUR FAMILIES...

ESPECIALLY FOR PEOPLE WHO HAVE IT HARD!!

WE BELIEVE IN **AL-KI**, OUR HOPE FOR THE FUTURE. THE DECISIONS YOU MAKE NOW ARE **OUR FUTURE**.

LAND ACKNOWLEDGEMENT
AL-KI

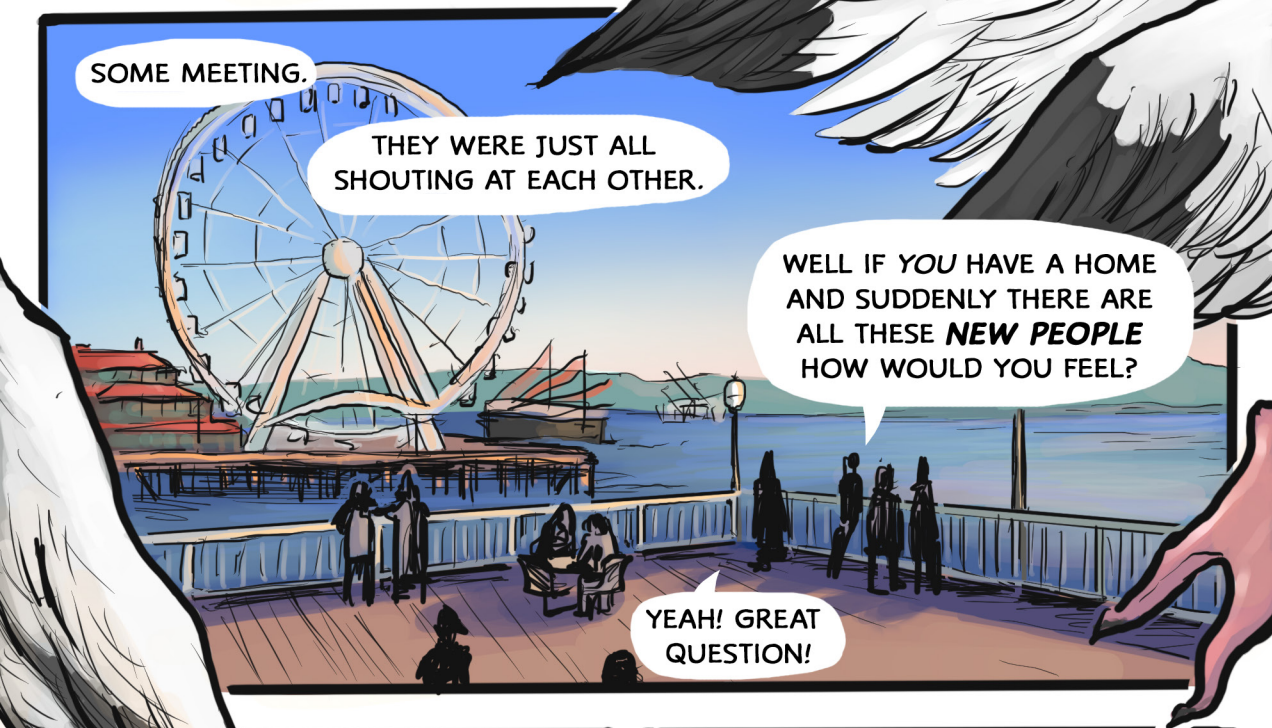




THERE ARE SO MANY
UNHOUSED PEOPLE HERE.

SOME HAVE MENTAL HEALTH
ISSUES; LOTS JUST CAN'T
AFFORD A PLACE TO STAY.

SEATTLE WATERFRONT



SOME MEETING.

THEY WERE JUST ALL
SHOUTING AT EACH OTHER.

WELL IF YOU HAVE A HOME
AND SUDDENLY THERE ARE
ALL THESE **NEW PEOPLE**
HOW WOULD YOU FEEL?

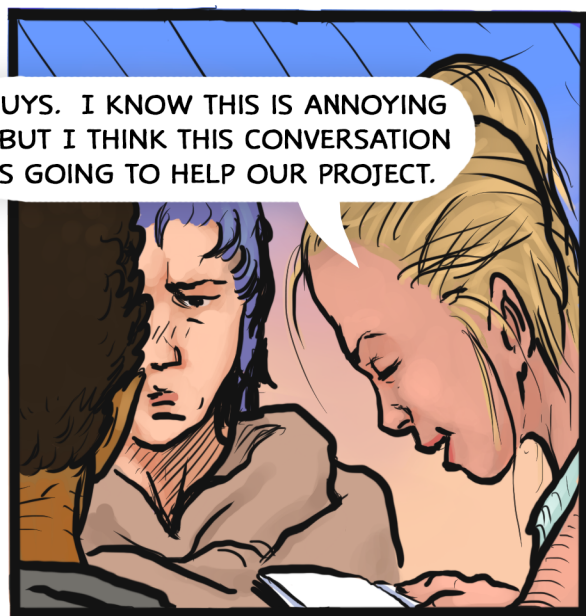
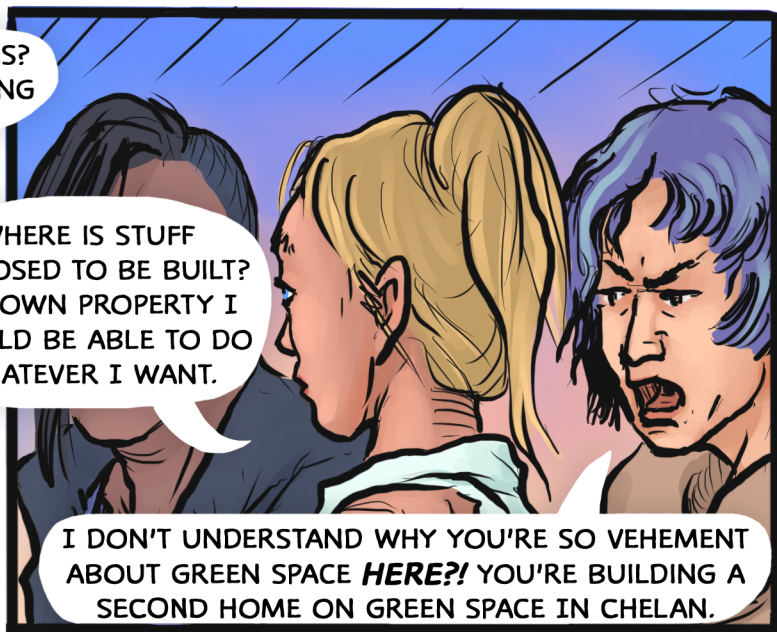
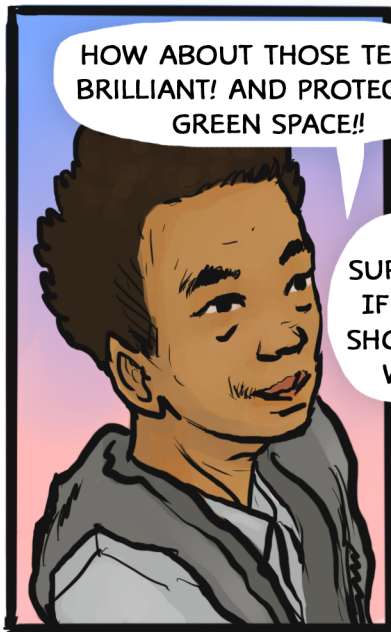
YEAH! GREAT
QUESTION!



SORRY. THAT'S NOT
WHAT I MEANT.

STORY OF MY PEOPLE.
IT'S HARDER THAN YOU
THINK TO FIND HOUSING.

Examples



EN ROUTE TO REDMOND

I'M GLAD
YOU CAME.

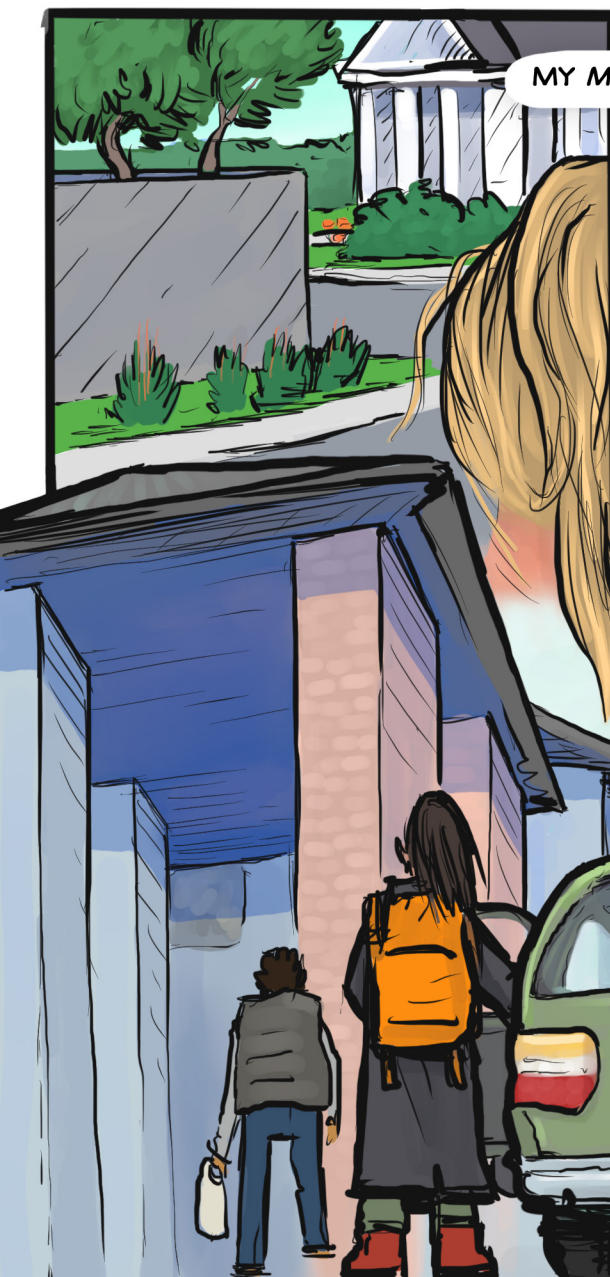
I THOUGHT I WOULD
SLUM IT THIS WEEKEND.

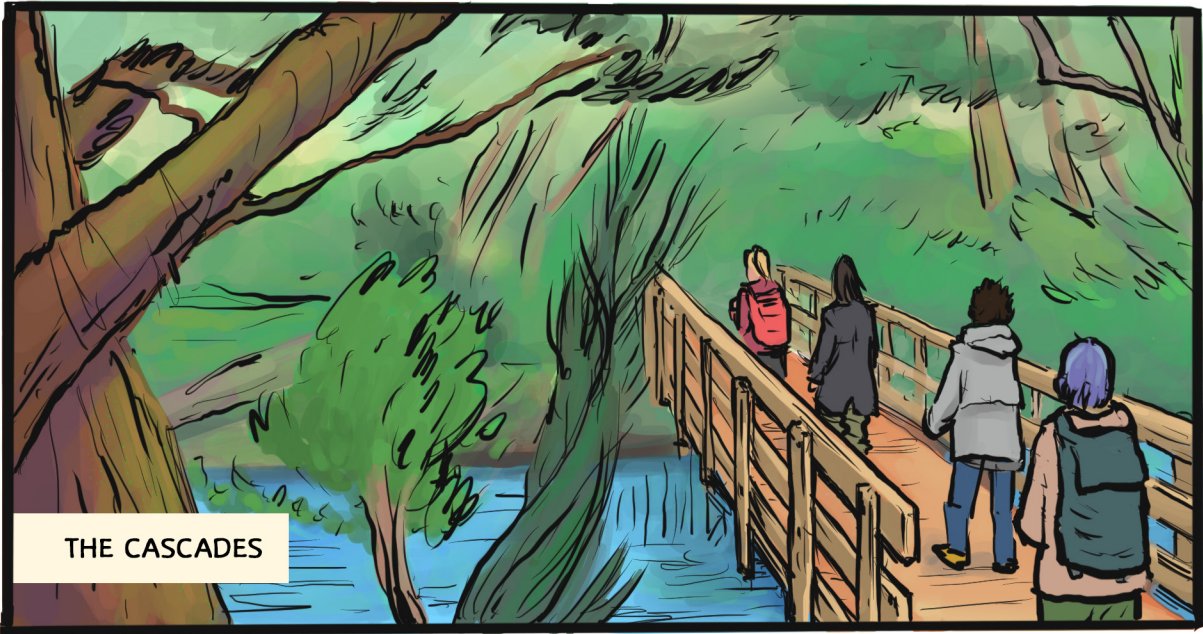
WE NOW ENTER THE LOW
DENSITY "SUBURBS" WHERE
WE LOVE OUR CARS - AND
OUR COFFEE. ANYONE NEED
A TOP OFF BESIDES ME?

WHERE 3,000 SQUARE FEET
HOUSE 3 PEOPLE - BUT COULD
HOUSE 3 FAMILIES.

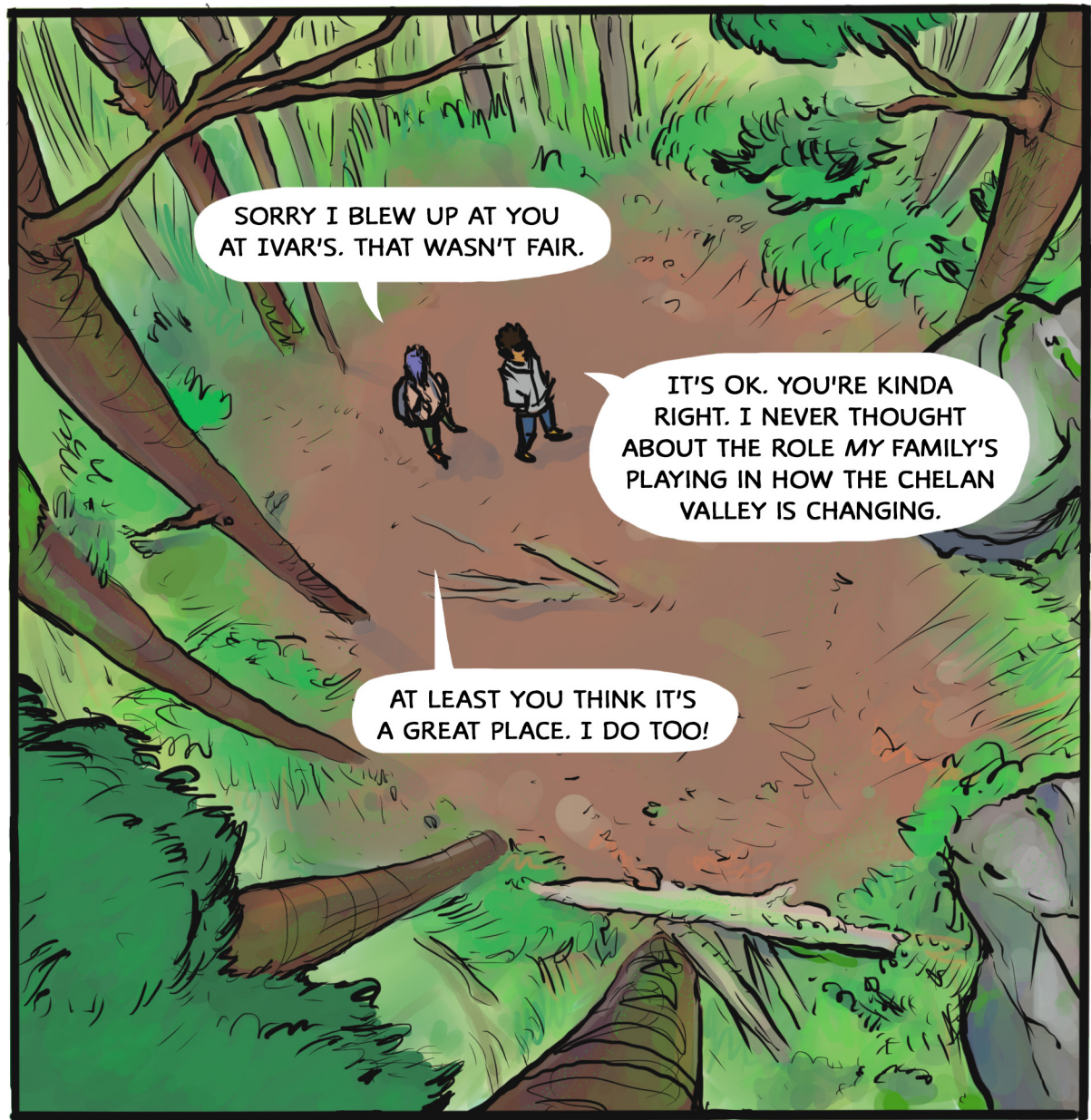
REALLY?

AW YOU GUYS! NIKKI
WOULD BE SO PROUD.





THE CASCADES



SORRY I BLEW UP AT YOU
AT IVAR'S. THAT WASN'T FAIR.

IT'S OK. YOU'RE KINDA
RIGHT. I NEVER THOUGHT
ABOUT THE ROLE MY FAMILY'S
PLAYING IN HOW THE CHELAN
VALLEY IS CHANGING.

AT LEAST YOU THINK IT'S
A GREAT PLACE. I DO TOO!



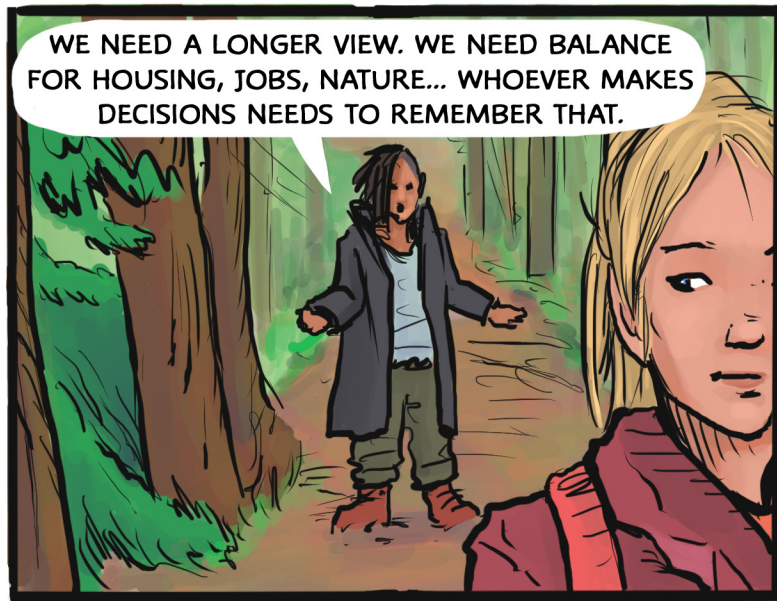
I'VE BEEN INSENSITIVE ABOUT CITY LIFE.

AT THE COMMUNITY MEETING, I SAW THE DEVELOPER'S OPPORTUNITY TO SCORE BIG. I DIDN'T THINK ABOUT ALL THE OTHER PARTS.



THAT'S JUST IT. EVERYONE JUST THINKS ABOUT THEMSELVES.


PROBABLY THINGS WILL CHANGE WHERE I LIVE TOO. I JUST NEVER THOUGHT ABOUT IT BEFORE.



WE NEED A LONGER VIEW. WE NEED BALANCE FOR HOUSING, JOBS, NATURE... WHOEVER MAKES DECISIONS NEEDS TO REMEMBER THAT.



SOUNDS LIKE **YOU** OUGHT TO BE ONE OF THE PEOPLE MAKING THE DECISIONS.



I USED TO THINK TECH
COULD SOLVE CITY DESIGN.
THERE ARE SO MANY
INTERCONNECTIONS.

GOOD POINT! MOST
ALGORITHMS WOULDN'T
ACCOUNT FOR US MEETING.

DON'T FORGET TO INCLUDE
LOW-INCOME HOUSING IN
YOUR SMART CITY SO WE
CAN STILL BE FRIENDS!

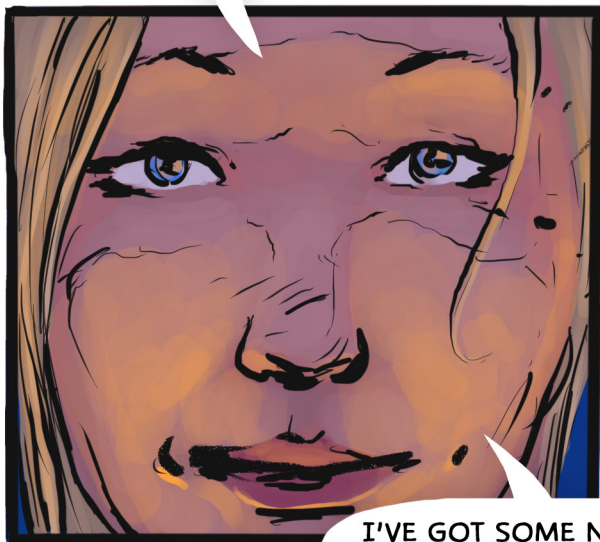
BE SURE WHAT'S PROTECTED NOW
STAYS PROTECTED. EVEN IF I CAN'T
LIVE ON THE CREEK I STILL WANT
TO BE ABLE TO GO THERE.



THIS ISN'T
JUST A PROJECT.
THIS IS US.

THE WHOLE STATE
IS GOING TO HAVE TO
WORK TOGETHER.

YEAH. AND
WE'D DO IT BETTER
THAN IT IS NOW.



I'VE GOT SOME NOTES FOR
OUR PRESENTATION. I THINK
DANIEL SHOULD PRESENT.

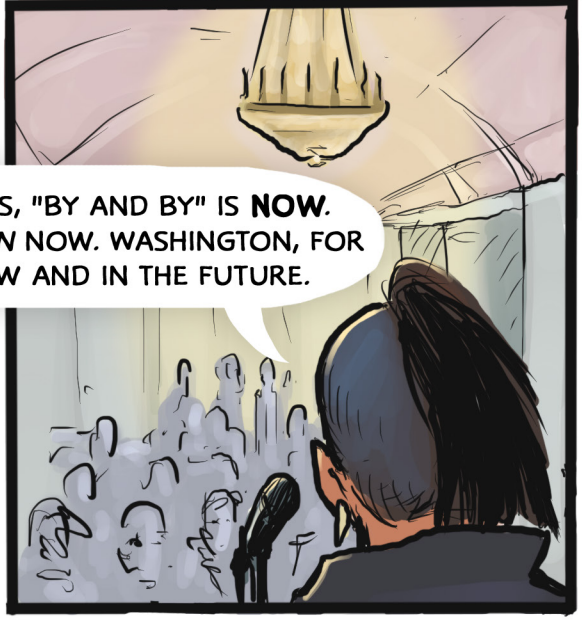


AGREED!!





FOR TEENS, "BY AND BY" IS **NOW**.
WASHINGTON NOW. WASHINGTON, FOR
ALL, NOW AND IN THE FUTURE.



DANIEL, THAT
WAS AWESOME!!



HEY, I'M CONNECTING
WITH TEENS FROM THE
COMMUNITY MEETING.
WANT TO COME?

FIRST THING - GOING TO
THE NEXT COUNTY PLANNING
COMMISSION MEETING!



WHAT ARE YOU
GOING TO DO WHEN
YOU GET BACK?



WE'RE DOING
THIS AGAIN NEXT
YEAR, RIGHT?



YOU BET
WE ARE!

COMMUNITY PLANNING¹⁰¹

1 PAY ATTENTION

GET & STAY INFORMED:

OBSERVE YOUR SURROUNDINGS

NOTICE CHANGES

KNOW YOUR OFFICIALS

DIG DEEPER FOR THE HISTORIES

SIGN UP FOR NEWS UPDATES

FOLLOW ISSUES YOU CARE ABOUT



2 GET INVOLVED

CONNECT WITH THE COMMUNITY:

JOIN A YOUTH COUNCIL

FIND COMMUNITY GROUPS

VOLUNTEER!

BE A HELPER

FOLLOW ON SOCIAL MEDIA

SHOW UP FOR EVENTS / MEETINGS



3 SPEAK OUT

PRO TIPS FOR SPEAKING YOUR MIND:

PREPARE YOUR THOUGHTS

WRITE IT DOWN!

PRACTICE IN THE MIRROR
OR WITH FRIENDS

JUST GO! SHOWING UP IS 95% OF IT

SPEAK YOUR TRUTH TO EVERYONE

SHARE YOUR VOICE IN CREATIVE WAYS
(WRITING, VIDEO, MUSIC, ART)



4 PURSUE PASSION

PATH TO BECOMING A PROFESSIONAL PLANNER:

LEARN MORE ABOUT PLANNING

RESEARCH CLASSES, CAMPS, PROGRAMS

GET AN INTERNSHIP IN PLANNING

CHECK OUT THE APA WEBSITE:
WWW.PLANNING.ORG



by: Jenna
DANIEL
Cricket Ben

WASHINGTON BY AND BY
A Community Planning Graphic Novel
By Gabrielle Lyon, Devin Mawdsley, Kayce Bayer
For the Youth in Planning Taskforce of the WA APA
www.washington-apa.org/youth-in-planning
#WashingtonByandBy

♥ WALPers
2019

STORY BACKGROUND

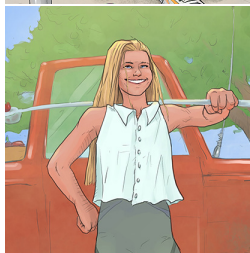
Washington, By and By, follows the adventures of four teens from around Washington brought together by “WALPers” (**W**ashington **L**eaders in **P**lanning), a two-week summer program in Olympia about planning and youth involvement.



Cricket, the daughter of property caretakers near Chelan, is an avid nature lover. The morning she departs for camp, Cricket learns devastating news: her family is selling their home. The mobile home they live in isn't worth much, but the property, set on land near a beautiful lake, has taken on new value as the area becomes ripe for development.



Daniel, a city-loving Tukwila resident with strong ties to his Quinault tribal community, is a keen observer, artist, and skeptic. He believes acknowledging the state's past is critical but it's not until he argues with his new friends does he realize his voice could help shape the future.



Jenna is a 5th generation apple farmer from the Yakima Valley. She has an economist's eye on housing and development issues and is an avid note-taker. When she realizes some of the issues the team is debating might also be happening on her own family's farm she is forced to reconsider what “home” means.



Technophile **Ben** opens his heart and home in Redmond to his new friends. When he realizes Cricket's dilemma might have been created, in part, by his own family's activities, he's forced to ask himself what his values might mean for other people's lives - and how he can put his skills to use.

Over the course of the story we learn about the places the characters are from through their eyes. The teens get to know Olympia, take the train to Seattle, visit the Wing Luke Museum, sit in on a community meeting, encounter teen activists, and hike and camp in the mountains. As the team works to help Cricket reconcile with the changes happening in her life, they also come to realize that “Washington, by and by,” really means “Washington, now. The Washington WE want.”



QUESTIONS TO CONSIDER

1. On page 12 Jenna says, “I never realized everything is planned. Even where my farm is allowed to be.” Daniel comments, “Is there a public process? They say so, but how does anyone ever hear about it?”
Why does planning matter?
2. Cricket is upset about having to move away from her childhood home in Chelan (pages 13-14). Development in the area has put increasing pressure on landowners to sell their property. Chelan is changing, and Cricket feels like she is losing a part of herself. Daniel says on page 14, “It’s like gentrification...in the country.”
What does Daniel mean? Have you or your family experienced displacement? Or do you know someone who had to move because of new development in their area? What happened?
3. Over the weekend the team is given a homework assignment to gather pictures of where they live and explain how planning is a factor (pages 15-18). Professional planners work to make neighborhoods, cities, regions and states livable by developing regulations for how land is used and creating long range plans for transportation, water use, housing, environment, preservation and sustainability.
Look carefully at each of the pictures on pages 15-18. How are they similar? What things are different? How might planning have shaped what you see?
4. When the team goes to the Wing Luke Museum in Seattle they visit exhibits on redlining and historic hotel rooms used by early Chinese immigrants (page 22). Jenna remarks, “These rooms are really small.” When Daniel responds, “Don’t YOU have workers? Ever been to their houses?” he is suggesting that the housing conditions for immigrant Chinese workers in the early 20th century are connected to housing for workers on Jenna’s apple farm.
Do you think this is a fair question? Housing comes up throughout the story. Why is housing such a big issue?
5. Community planning is an approach intended to ensure all members of a community are involved and represented in decision-making processes. At the community planning meeting at the public library (page 24), Cricket comments, “No one is listening to each other.”
Why are people upset in this meeting? What are some of the different viewpoints? What do the teen presenters want planners to consider? Do you think community planning is important? How could this meeting have been run differently to ensure all voices were heard?
6. After the community meeting the team discusses what they heard while walking along the Seattle waterfront (page 27-28). When Ben expresses support for the call to protect green space Cricket responds, “I don’t understand why you’re so vehement about green space HERE?! You’re building a second home on green space in Chelan.”
Why is Ben’s comment so upsetting to Cricket? How would you feel if you were Ben? How would you feel if you were Cricket?
7. On page 35, Daniel closes the team’s final presentation with the statement, “For teens, ‘By and By’ is NOW. Washington NOW. Washington, for all, now and in the future.”
How should people balance issues now with issues that will come up in the future? What is the role and responsibility of youth in shaping where they live - and where they might live in the future?
8. At the end of the story (page 35) Ben asks, “We’re doing this again next year, right?”
Do you think the group will stay in touch? How do you think Jenna, Ben, Daniel and Cricket were changed by their experiences in WALP’ers?

ABOUT THE AUTHORS



GABRIELLE LYON is an educator, activist and writer with a focus on developing programs and spaces that enable participation by populations underserved by traditional design approaches. Gabrielle led the *Washington, By and By* project including managing the community-design process to develop a stakeholder-informed design brief; serving as the artistic director, writing collaborator and editor. This is her 2nd graphic novel project. Lyon earned her BA and MA in History from the University of Chicago and her PhD in Curriculum Studies from the University of Illinois at Chicago. She lives in Chicago where she is a mom to Arlo and Ava. She serves as the Executive Director of Illinois Humanities and is a proud member of City Open, an organization that unites planners and community members. Follow her online at [@LyonGabrielle](https://twitter.com/LyonGabrielle).



KAYCE BAYER is an artist educator and designer in Chicago. She earned her MFA in Studio Art from Memphis College of Art in Tennessee. Kayce led the visual and historical research for *Washington, By and By*, kept us organized (no small feat) and was a writer and editor. She was also responsible for color and final design work for publication. Her creative practice is varied - working across media and collaborating with artists, writers, musicians, and community members - exploring personal narrative, histories, and art experience outside of institutional spaces. Kayce has over 15 years experience as an arts and design educator, currently grounded by her work with teens at ChiArts. www.kaycebayer.com



DEVIN MAWDSLEY is a Chicago-based creative designer working at the crossroads of UI/UX and illustration. He earned his MFA in Studio Painting at Indiana University, Bloomington, Indiana. Devin was responsible for the pencil and ink work for *Washington, By and By* along with character and story development. Devin established **Eyes of the Cat Illustration Studio** to harness the power of narrative and help raise collective consciousness in troubled times, telling stories by and for the people. He is an avid student of language, with a BA in Chinese, and work experience in interpretation and translation. Devin teaches at ChiArts, Chicago's public arts high school. www.devinmawdsley.com | www.eyesofthecatillustration.com

The Lyon, Bayer and Mawdsley team worked with Gwen Rousseau, Shane Hope and Steve Butler, co-chairs of the **Youth in Planning Taskforce of the Washington Chapter of the American Planning Association**, a volunteer-led committee of professional urban planners who commissioned *Washington, By and By*.



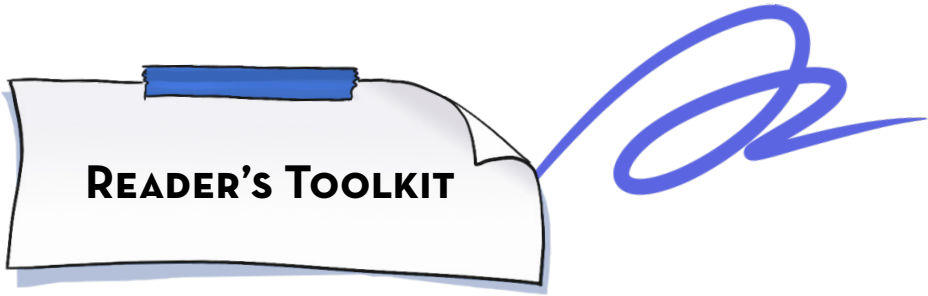
ABOUT THE YOUTH IN PLANNING TASKFORCE

“We believe youth provide unique and fresh ideas to the dialogue on creating great places.”

The Youth in Planning Taskforce aims to raise youth awareness of the importance of their voice in forming our future. We work to provide resources for teachers, planners, and public officials to engage youth in planning processes that generate lasting value and provide meaningful opportunities for youth to engage in making their local communities better places for all. The Taskforce is one of the standing committees of the Washington Chapter of the American Planning Association serving planners across Washington state.

Learn more about the Youth in Planning Taskforce of the APA-WA:

www.washington-apa.org/youth-in-planning



READER'S TOOLKIT

About the *Washington, By and By* Toolkit:

Washington, By and By is accompanied by a free online toolkit available at <https://www.washington-apa.org/youth-in-planning>.

The toolkit includes a set of resources to help planners, teachers and librarians use *Washington, By and By* as a jumping off point for fostering youth involvement in planning.

HOW TO GET INVOLVED

Contact your city or county Planning Department

www.wacities.org/about-us/our-281-cities-and-towns/member-cities (for cities)

Join or start a Youth Council

www.bit.ly/317pAau

RESOURCES

ALKI

American Planning Association

In Your Community:

www.planning.org/communityoutreach/

Teaching Young People about Planning:

www.planning.org/educators/

Video: "The Future Belongs to Those Who Prepare For It":

www.bit.ly/2GC2Wzb

American Planning Association-Washington Chapter

www.washington-apa.org/ (general website)

www.washington-apa.org/youth-in-planning (youth in planning webpage)

WA State Department of Commerce - Growth Management

www.commerce.wa.gov/serving-communities/growth-management/

Municipal Research and Services Center (MRSC) - Explore Topics

www.mrsc.org/Home/Explore-Topics.aspx

Association of Washington Cities - Data and Resources

www.wacities.org/data-resources

Puget Sound Regional Council

www.psrc.org/

Center for Architecture and Design, Seattle

www.cfadseattle.org/

Stewart, Jill, et al. *Planning the Pacific Northwest*. Routledge, 2015.



ACKNOWLEDGEMENTS

From the Authors

We would like to thank a few people who have made this work possible through their inspiration, support, and labor. Thank you especially to Youth in Planning Taskforce for picking us for this project and believing we could pull it off. Special thanks goes to **Owen Oliver** and **Stephanie Velasco** for gifting us with your stories and affirming our narrative as it unfolded. Thank you to the young people in our lives who remind us to reimagine the future and shape the world as we want it to be!

From Gabrielle ~ Thanks **Ava**, **Arlo** and **Josh** for being as excited as I was to have the chance to work on another graphic novel. *From Kayce* ~ Thank you, **Chris**, for holding down the fort and caring for **Otis** (with a healthy dose of comic book reading!) while I fervently colored. *From Devin* ~ Thank you, **Nina**, for your continual patience, love and understanding.

From the WA-APA

Young people! They are the foundation of our future.

How can we attract and empower them to understand the civic process and become engaged in shaping their communities in ways that will make our world better? How can we reach out to a diverse generation that is coming of age and show them that planning is interesting and tangible? As a planner, I've wondered about these questions for a long time. I'm grateful to have been part of this project that provides an innovative approach to engaging teens (along with the "young at heart").

Washington, By and By will help readers make sense of community planning — not as a set of statistics and maps, but as a well-illustrated story to which people can relate and see where they fit in. This graphic novel encourages readers to examine some critical questions about growth management: How does planning happen? Why does it matter? What is the role and responsibility of youth in shaping where they live — now and in the future?

While some of the novel's themes relate specifically to Washington's growth management framework, most parts of the process would apply to community planning that happens in every state. Understanding the public planning process — along with the issues at hand — is fundamental for anyone to be engaged effectively. I also think the graphic novel approach to exploring planning issues will be useful for people of all ages, including those for whom English is not their first language.

This initiative has been made possible by the energy and vision of key American Planning Association-Washington Chapter (APA-WA) members and support from the chapter's leadership and its Youth in Planning Task Force. Their efforts led the chapter to commission *Washington, By and By* for development by Gabrielle Lyon, Devin Mawdsely, and Kayce Bayer. The creative team's exceptional talent, creativity and passion for putting youth at the center are what make this book an engaging tool for educating youth about their ability to influence real decisions affecting their community. We greatly appreciate their devotion of time and talents to this project.

A special thanks to the many Washington planners who participated in our design brief workshop and survey enabling the creative team to capture the essence of planning in Washington state. Also, a big thank you to all our backers in our Kickstarter campaign. Your support provided the foundation for finalizing the novel and building a strong community for moving this novel forward.

The APA-WA Youth in Planning Taskforce's goal is to have the graphic novel used by teachers in civic courses that will be taught in our state at the high school level and to encourage other youth-oriented organizations to use it as well.

I'm excited to see how this project unfolds. I hope it helps to inspire many other communities and planning organizations to achieve meaningful public engagement and successful planning outcomes.

Shane Hope, AICP

Development services director for Edmonds, Washington,
and the former vice-president of APA's Washington Chapter.

THANK YOU TO OUR SUPPORTERS!

Washington, By and By was made possible thanks to the generosity of many people who supported our Kickstarter campaign. The campaign includes a great video featuring Washington Planners Gwen Rousseau, Owen Oliver and Stephanie Velasco and highlighting places featured in the novel. Check it out at bit.ly/WashingtonByandBy. Thank you backers!

REGION

Steve Butler

COUNTY

Andrea Garfinkel-Castro
Bob Hirsch
Brian Bauman
Chaz
Donald Miller
Guest 1742338967
Gwen Rousseau
Heather McCartney FAICP
Jacqueline A. Reid, AICP
Jerry Sudee
Jill Sterrett
Jose and Alma Velasco
Josh Fox

Kamuron Dennis Gurol
Karen Wolf
Kris Torkelson
Matt Knoepke
Nancy Lyon
Oscar Newman
Paul Inghram
Rebecca Maskin
Rick Sepler, AICP
Ryan and Stacey Richey
Shane Hope
Therese Calgary
Valerie Mawdsley

CITY

Adam Hecktman
Adam Rosa
Andy Meyer
Ava & Arlo Lyon-Sereno
Ben Bakkenta
Ben Shumaker
Bernard Loyd
BJ Shea
Cynthia Cheski
Debbie Lacy
Donna deBit

Dr. Anthony Paulson
Elle Ramel
Ellen A.
Gigi The Planner
Jen Cannon
Jenn Yoo and Patrick Miner
Jenna, Nelson & Tilda Trautman
Joe Germuska
Joe Tovar
Major Taylor Project
Michael A. Welch

Mike Davis
Patricia Conner
Ryan Kennedy
Ryan Noakes
Seth Schromen-Wawrin
Shelley Bolser
Sylvia B. Mendoza
T. Fehr
Tim and Liz Conner



NEIGHBORHOOD

Abril Vela
Amanda Yamaguchi
Aur lie Segura
Brian J. Lawrence
Depth and Light
Elizabeth Iaukea
Erin Ollig
Esther Lee
Frank Muraca
Steven M Cohn
Heather Hedlund
Jeff Solin

Jennifer Sutton
Jon Mastrude
Karen Sherwood
Kate Calabra
Katie Bunge
L. Nieman
Lauren Moore
Lucinda Rogers
Meg Sudler/Situations Studio
Melissa Shumake
Michael J Hintze
N. Faghin

Nancy Eklund
Nick Welch
Paula Wiech
Peter Westhagen
Raphael Lyon
Sana Jafri
Sara Lovett
Sendhil Revuluri
Taylor Jones
Veronica Guenther

COMMUNITY

Aaron Griffin
Alex Comeau
Alice Okumura
Andrew Huff
Anne Griffin
Benjamin Stokes
Brennon Staley
Brianna Blatchley
Brooklyn Holton
Bryan Clark
Building Matters Ann Arbor
Chris Steckler
Daniel Rende

David Henning
Donnell Allan
Eiko Tubridy
Erika Bartlett
Galen Herz
Gardner R. Smith
Gia Biaggi
Guest 1060065944
Jaynie Schultz
Jen Masengarb
John Shaw
Katy Haima
Kirsten Tilleman

Lindsey Conklin
Linnea Graffunder-Bartels
Martha Pidcock
Melissa Johnston
Michael de Lange
Miguel
Mychal Ludwig
Omar Rodriguez
Paul Ryan
Robin Long
Scarlet Ponder
Shawn Smith





NOTES & PLANS



